



MEMO

TO: Steve Lackey
Design Chief Engineer
City Hall - 7th Floor
455 N. Main
Wichita, Kansas 67218

PROJECT NO. 30-79254-1112

PROJECT: Spring Lake Addition

COPIES TO:

ATTN:

DATE: March 19, 1980

Mike Lindebak ✓

Dick Linn

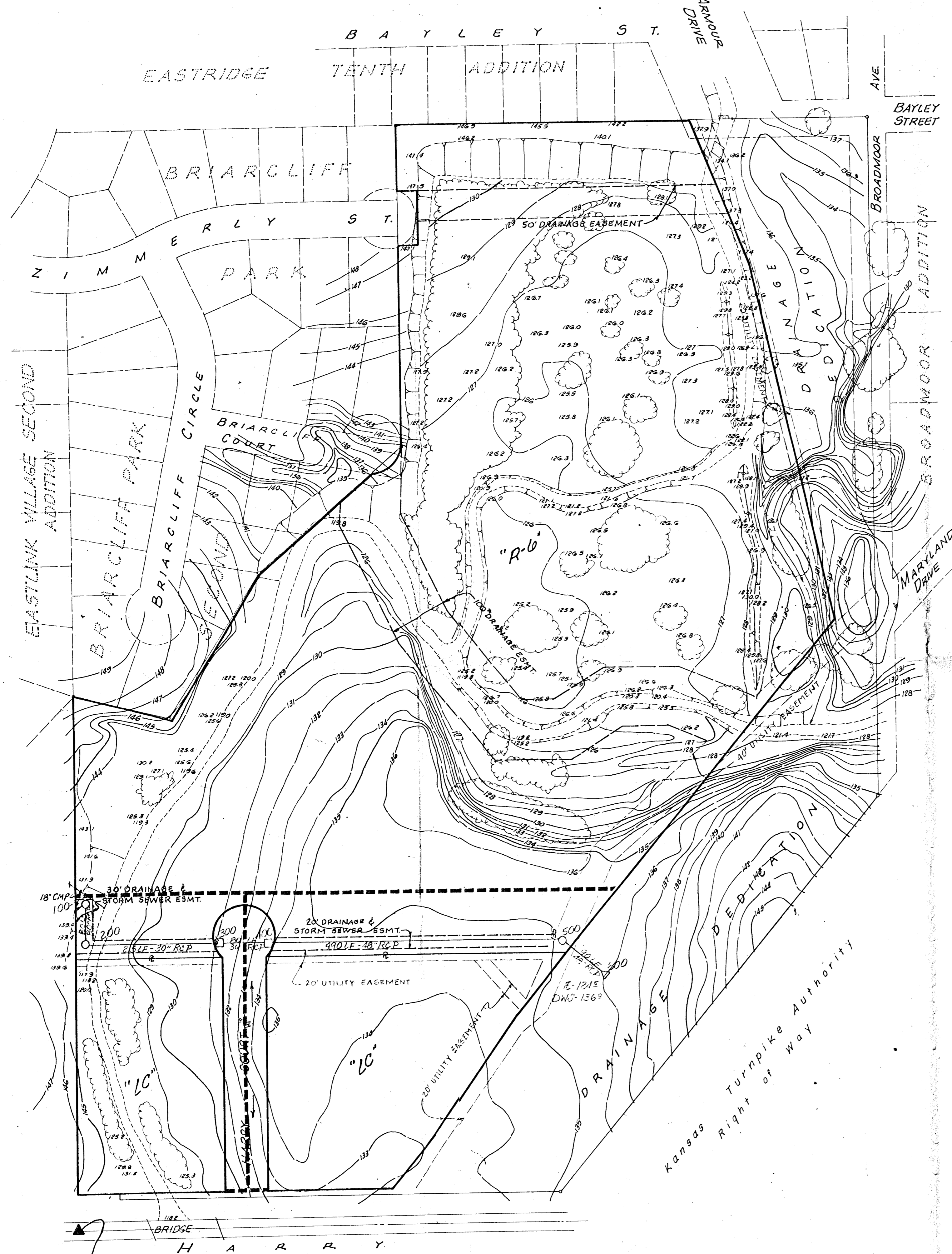
Gary Wiley

FROM: Chris Brennenstuhl

REFERENCE: Storm Sewer plan and cost estimate

PLEASE ADVISE IMMEDIATELY OF ANY MISCONCEPTIONS OR OMISSIONS YOU BELIEVE TO BE CONTAINED HEREIN.

Enclosed please find the drainage plan for Spring Lake Addition which has been revised to show storm sewer sizes. Also enclosed are the supportive calculations and cost estimate. Should any more information be required, please contact me.



SCALE: 1"=100'

- Notes:
1. Existing zoning - 'AA'
 2. Date of topographical map - 31 May 1972
 3. Bench Mark - Standard Disc on the Northeast Corner of Bridge at the Southwest Corner of property. ELEVATION 137.17
 4. Minimum pad elevation:
 'R-6' Area = 140.70
 'LC' Area = 139.00
 Minimum fill elevation:
 'R-6' Area = 139.20
 'LC' Area = 137.50

- LEGEND:
- Computer Note No.
 - Manhole
 - Inlet
 - Outlet
 - Storm Sewer Size and Location
 - Limits of Drainage Area

SW CORNER OF THE SE 1/4 OF SECTION 30, T 21 S, R 2 E OF THE 6TH P.M.

No.	1	Added storm sewer sizes, note no., elevations	ELH	3-18-80
		Revision	By	Date
SPRING LAKE ADD. DRAINAGE PLAN WICHITA, KANSAS				
PROFESSIONAL ENGINEERING CONSULTANTS, P.A. <small>ENGINEERS WICHITA, KANSAS</small>				
Designed by	CMB/RJH	Job No.	79254	Sht. 1 of 1
Drawn by	KJH	Date		