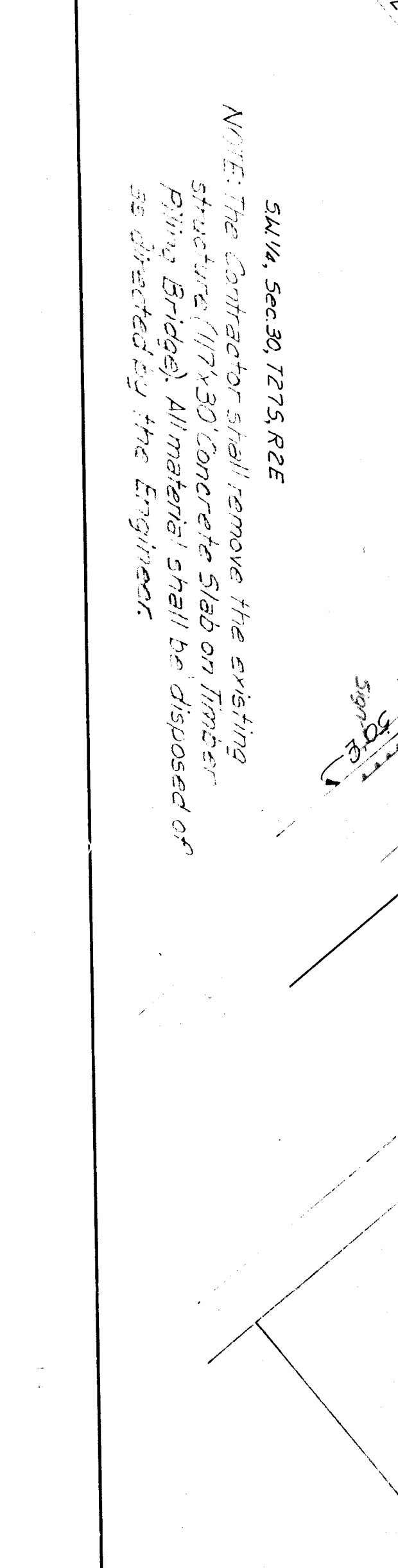
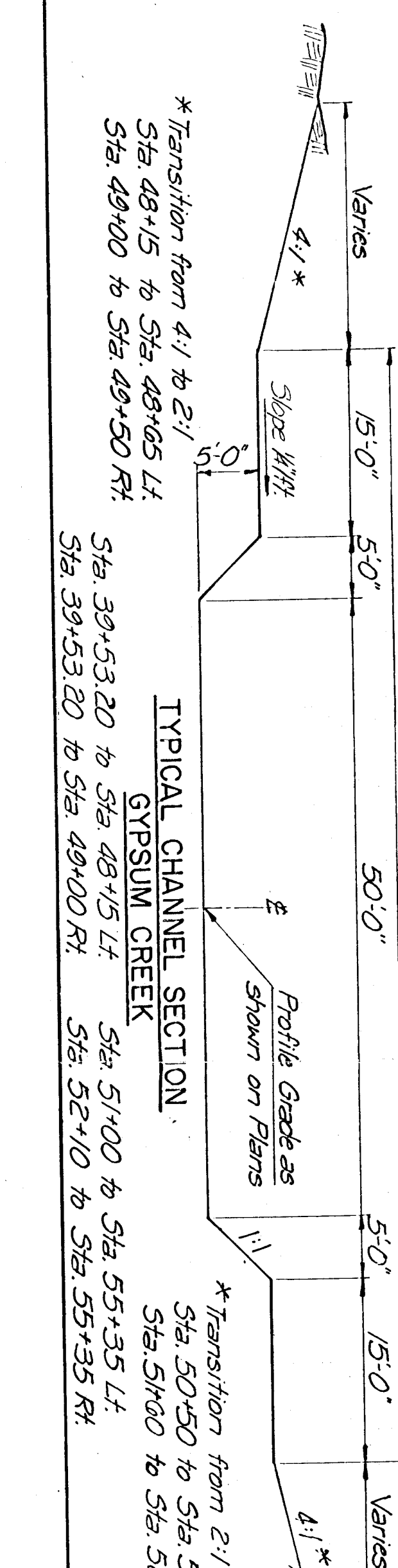
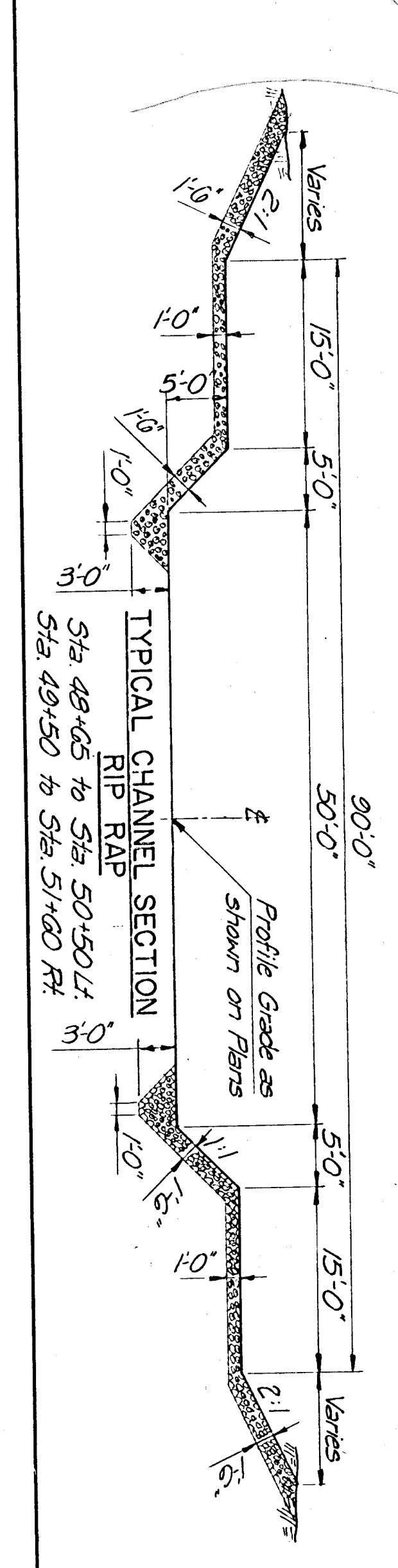
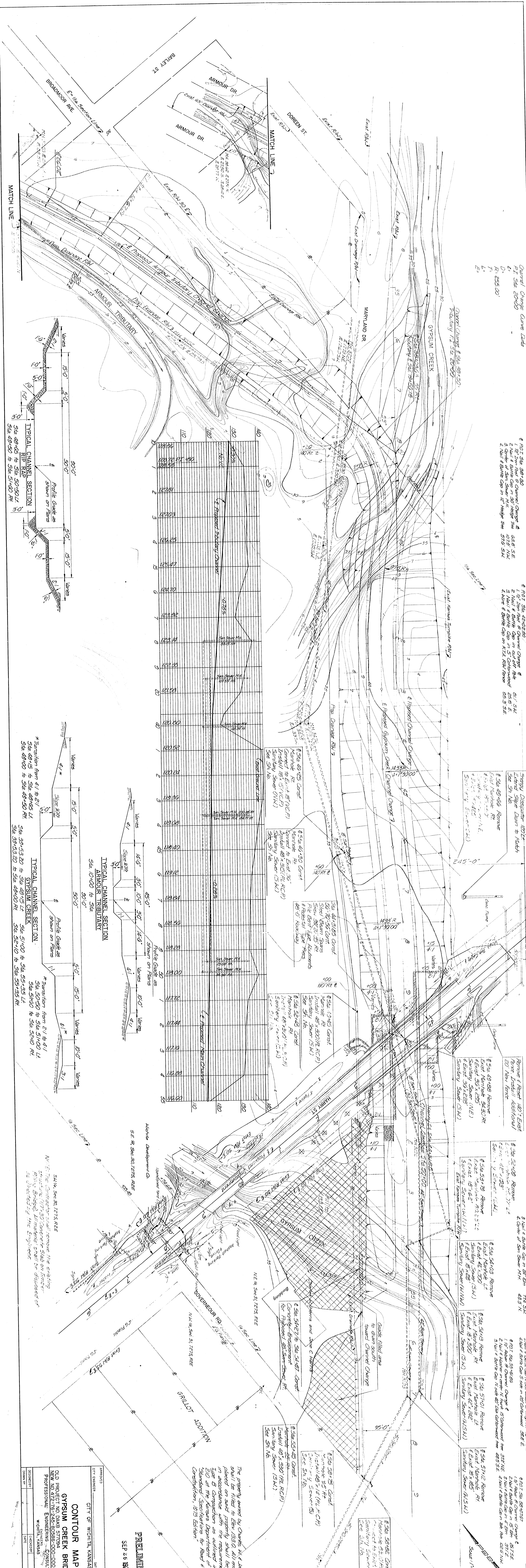


Channel Change Line Code
 P.I. Sta 20+00
 L1
 L2
 L3
 L4
 L5
 L6
 L7
 L8
 L9
 L10
 L11
 L12
 L13
 L14
 L15
 L16
 L17
 L18
 L19
 L20
 L21
 L22
 L23
 L24
 L25
 L26
 L27
 L28
 L29
 L30
 L31
 L32
 L33
 L34
 L35
 L36
 L37
 L38
 L39
 L40
 L41
 L42
 L43
 L44
 L45
 L46
 L47
 L48
 L49
 L50
 L51
 L52
 L53
 L54
 L55
 L56
 L57
 L58
 L59
 L60
 L61
 L62
 L63
 L64
 L65
 L66
 L67
 L68
 L69
 L70
 L71
 L72
 L73
 L74
 L75
 L76
 L77
 L78
 L79
 L80
 L81
 L82
 L83
 L84
 L85
 L86
 L87
 L88
 L89
 L90
 L91
 L92
 L93
 L94
 L95
 L96
 L97
 L98
 L99
 L100



PRELIMINARY
 SEP 26 1979

PROJECT: CITY OF WICHITA, KANSAS
 CITY ENGINEER: [Signature]
 DATE: [Date]
 SHEET NO. 5
 TOTAL SHEETS 5

CONTOUR MAP
 GYPSUM CREEK BRIDGE
 OLD PROJECT NO. DMS 577994
 NEW PROJECT NO. 472-76-245-80386-000-000-001
 PROFESSIONAL ENGINEER: CONSULTANTS, P.A.
 WICHITA, KANSAS

The property owned by Charles H. & Jane C. Harris shall be filed to show 100% all easements placed on said property shall be compacted in accordance with the requirements for Title 8 Compaction as outlined in Section 210 of the Kansas Department of Transportation Standard Specifications for Road & Bridge Construction, 1975 Edition.