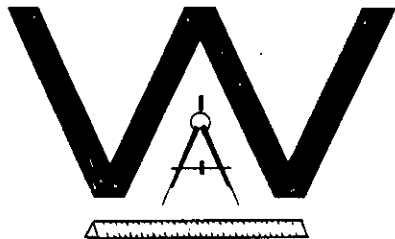


THE CITY OF WICHITA



CITY ENGINEER'S OFFICE
CITY HALL — SEVENTH FLOOR
455 NORTH MAIN STREET
WICHITA, KANSAS 67202
(316) 268-4501

October 4, 1988

Ken Bengtson
Mid-Kansas Engineering Consultants P.A.
3500 N. Rock Road, Bldg. #800
Wichita, Kansas 67226

Dear Ken:

The property located in Wichita, Kansas, legally described as "Lots 2 and 11, Block 1, Teal Cove Addition", is shown not to be within a special 100 year flood hazard area as determined from Map Panel Number 15, Flood Hazard Boundary Map for the City of Wichita, Sedgwick County, Kansas.

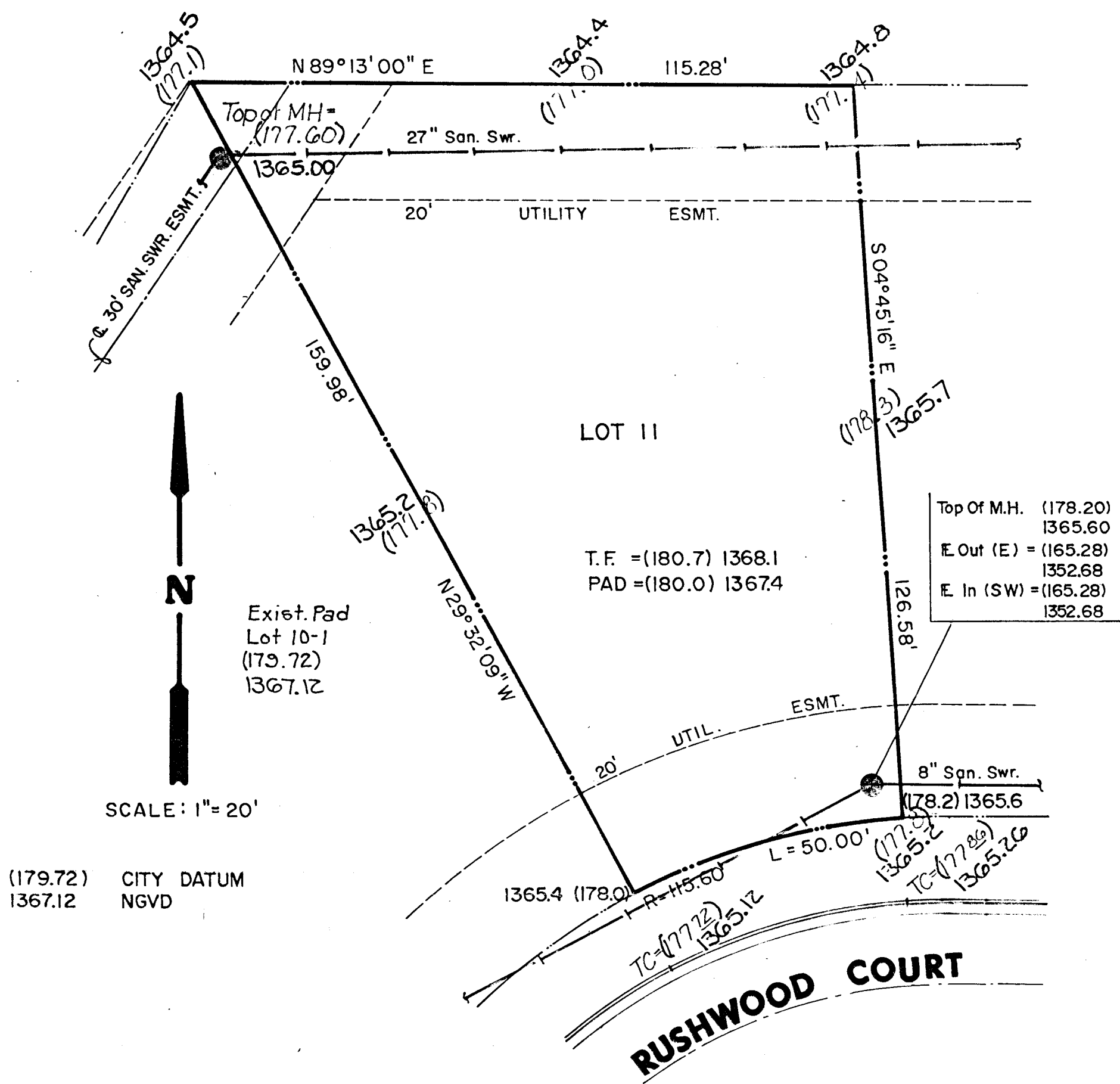
If you have any further questions, please contact Mike Greene at 268-4573.

Sincerely,

Chris J. Breitenstein, P.E.
Civil Engineer III

CJB:ta

7112J



LEGEND

• 000.00	= Proposed Elevations
00.0	= Existing Elevation
0.0 %	= Flow Arrow & Percent Of Slope
Pad	= Elevation At Garage Door Opening
T.F.	= Top Of Foundation
T.C.	= Top Of Curb
FL	= Flow Line
Add 1 Step	= Extra Step From Garage Floor To Finish Floor

BUILDER - Buck Alley

T.F.	(180.7) 1368.1
Sanitary Sewer Flowline	(165.30) 1352.70
Difference T.F. - San. Sewer	15.4
Minimum Pad	(179.10) 1366.50
100 Year Flood	(176.70) 1364.10



TEAL COVE
LOT II, BLOCK I

MID-KANSAS ENGINEERING CONSULTANTS PA
3500 NORTH ROCK ROAD
BUILDING #800
WICHITA, KANSAS 67226

Design	GJA
Drawn by	DPR
Checked by	
Date	5-13-88
Job no.	
Sheet	1
of	1

636-5566