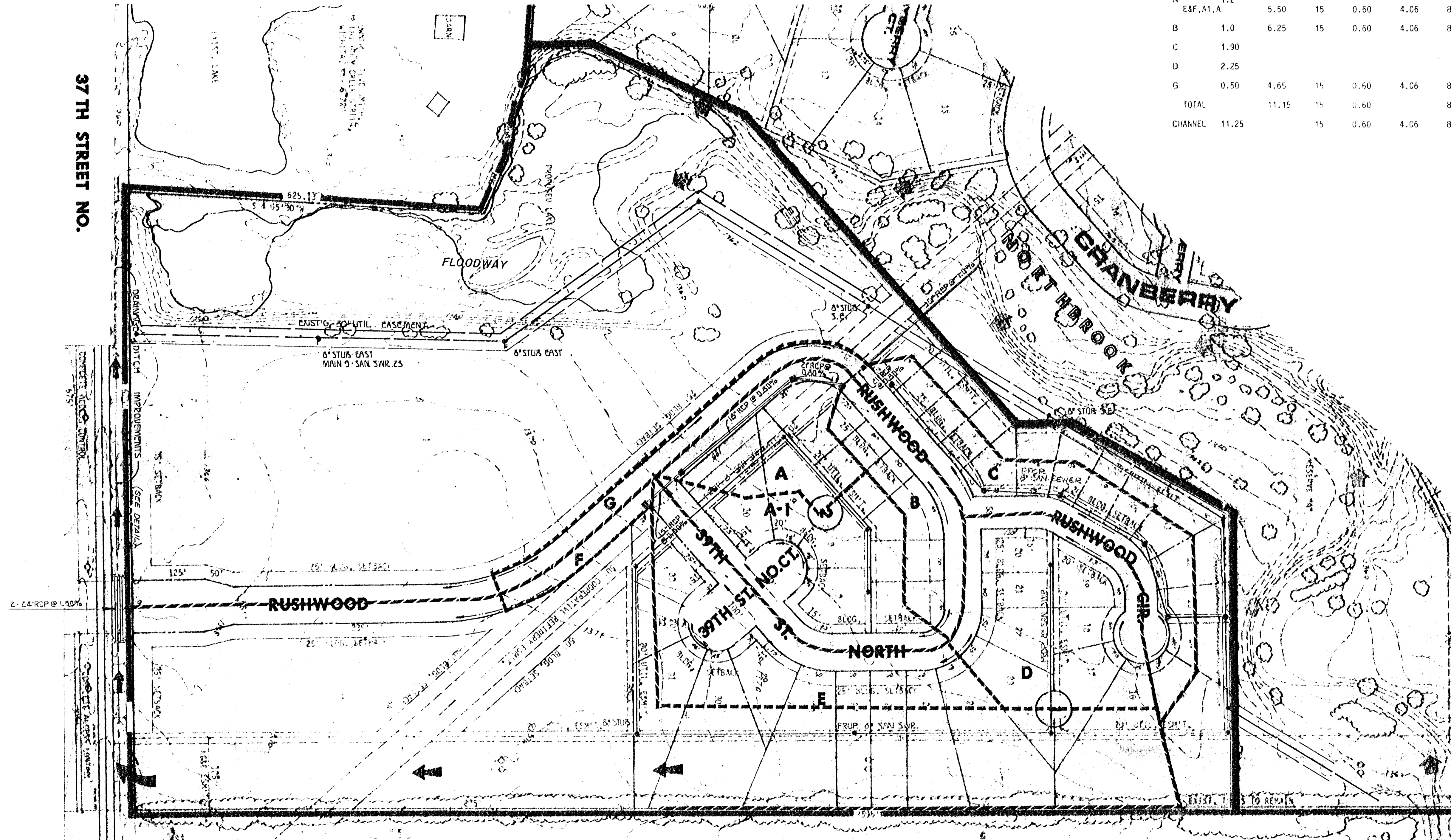
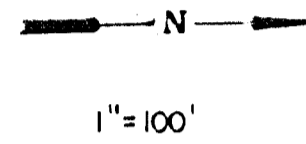


37TH STREET NO.

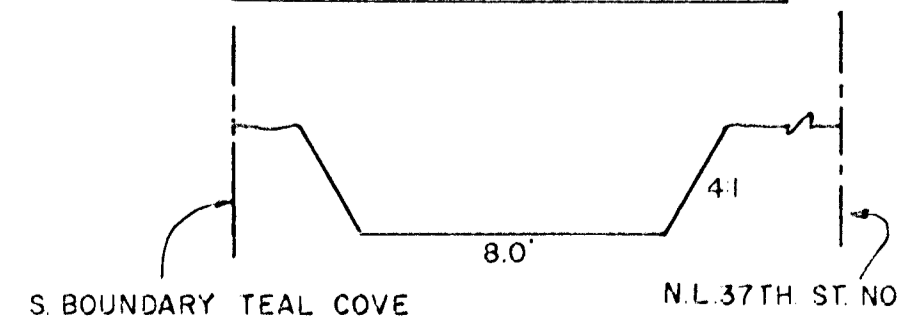


| NODE | AREA ACRES | AREA ACC. | T.C. Min. | C | 1/2 | 100 | Q2 | Q100 | PIPE SIZE | PIPE SLOPE | |
|---------|------------|-----------|-----------|------|------|------|-------|-------|-----------|------------|---------|
| E | 2.15 | | | | | | | | | | |
| F | 0.25 | 2.40 | 15 | 0.60 | 4.06 | 8.98 | 5.85 | 12.93 | 15" | 0.50% | 1 INLET |
| A1 | 1.9 | 4.30 | 15 | 0.60 | 4.06 | 8.98 | 10.47 | 23.17 | 18" | 0.80 | 1 INLET |
| A | 1.2 | 5.50 | 15 | 0.60 | 4.06 | 8.98 | 13.40 | 29.63 | 21" | 0.80 | |
| B | 1.0 | 6.25 | 15 | 0.60 | 4.06 | 8.98 | 15.23 | 33.68 | 21" | 0.80 | 2 INLTS |
| C | 1.90 | | | | | | | | | | |
| D | 2.25 | | | | | | | | | | |
| G | 0.50 | 4.65 | 15 | 0.60 | 4.06 | 8.98 | 11.33 | 25.05 | | | 2 INLTS |
| TOTAL | | 11.15 | 15 | 0.60 | | 8.98 | | 60.08 | 36" | 1.00% | |
| CHANNEL | 11.25 | | 15 | 0.60 | 4.06 | 8.98 | 27.41 | 60.62 | 2-24" | 1.5% | |



Proposed T.C.
Proposed E of SWS

TYPICAL CHANNEL DETAIL



NOTE: AN ADEQUATE STORM DRAINAGE SYSTEM SHALL BE INSTALLED AT THE TIME OF DEVELOPMENT OF LOTS 18 & 33, BLOCK 1.



**TEAL COVE
DRAINAGE PLAN**

Design
Drawn by
Checked by
Date
Job no.

MID-KANSAS ENGINEERING CONSULTANTS PA
240 NORTH ROCK ROAD
SUITE 130
WICHITA, KANSAS 67206

682-6561

Sheet 1
of 1