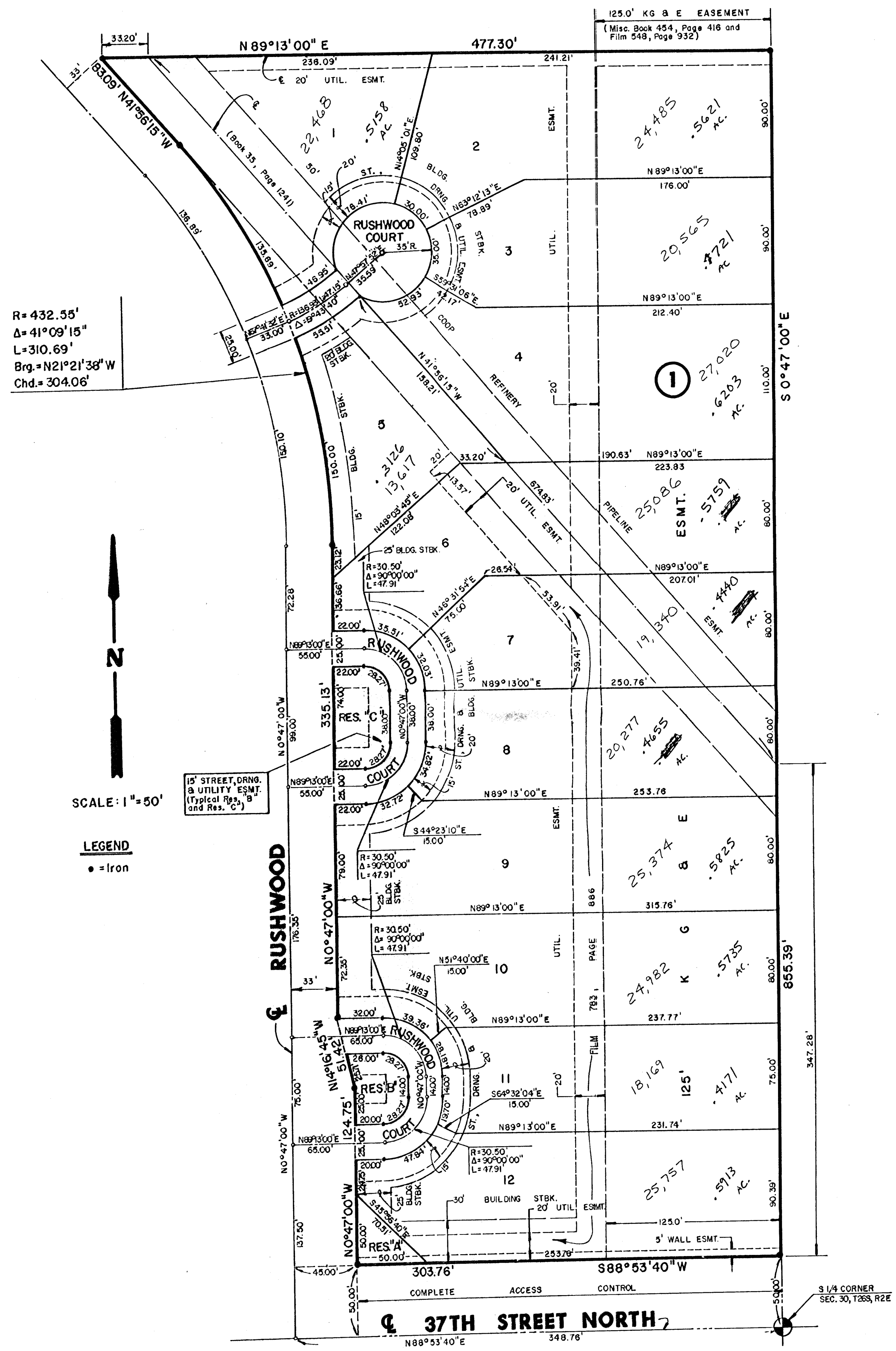


# FINAL PLAT OF TEAL COVE SECOND

## AN ADDITION TO WICHITA, SEDGWICK COUNTY, KANSAS



I, Kenneth H. Bengtson, a Civil Engineer in Kansas, do hereby certify that I have been in responsible charge of surveying and platting of "TEAL COVE SECOND" an addition to Wichita, Sedgwick County, Kansas, into Lots, a Block, Reserves, and Streets, the same being accurately set forth in the accompanying plat and described herein:

A replat of Lot 33, Block 1, and Reserve B, Teal Cove, an addition to Wichita, Sedgwick County, Kansas.

The contingent street dedication for the northeast circumferential project is being vacated by virtue of K.S.A. 12-512(b).

I hereby certify that the details of this plat are correct to the best of my knowledge and belief this \_\_\_\_\_ day of \_\_\_\_\_, 1986.

Kenneth H. Bengtson, P.E.  
Mid-Kansas Engineering Consultants, P.A.  
3500 N. Rock Road, Building #800  
Wichita, KS 67226

Know all men by these presents that we the undersigned property owners of the land as above set forth in the Civil Engineers Certificate, have caused the same to be surveyed and platted into lots, a block, reserves, and streets, the same to be known as "TEAL COVE SECOND", an addition to Wichita, Sedgwick County, Kansas. The streets are hereby dedicated to and for the use of the public. Easements for the construction and maintenance of streets, drainage and public utilities as indicated on the accompanying plat are hereby granted. The wall easement, as indicated on the accompanying plat, is platted for purposes of wall construction. Reserve "A" is for utilities, drainage, landscaping, irrigation, entry monuments and/or walls. Reserves "B" and "C" are for utilities, drainage, landscaping, irrigation and walls. All Reserves are to be owned and maintained by a Homeowners Association. All abutters rights of access to or from 37th Street North over and across the south line of "TEAL COVE SECOND", is hereby granted to the City of Wichita.

*Mary Lynn Oliver*  
Mary Lynn Oliver

*William L. Oliver, Jr.*  
William L. Oliver, Jr.

STATE OF KANSAS      SS:  
COUNTY OF SEDGWICK

Be it remembered that on this \_\_\_\_\_ day of \_\_\_\_\_, 1986, before me a Notary Public in and for said State and County, came William L. Oliver, Jr. and Mary Lynn Oliver to me personally known to be the same persons who executed the foregoing instrument of writing and duly acknowledged the execution of the same. In testimony whereof I have hereunto set my hand and affixed my notarial seal. In the day and year above written.

\_\_\_\_\_, Notary Public  
My Appointment Expires: \_\_\_\_\_

We, the Mid-Kansas Federal Savings and Loan Association, Wichita, Kansas, mortgagees on the above described property do hereby consent to the plat of "TEAL COVE SECOND".

Mid-Kansas Federal Savings and Loan Association

By: Max L. Herzet, Senior Vice-President

STATE OF KANSAS      SS:  
COUNTY OF SEDGWICK

Be it remembered that on this \_\_\_\_\_ day of \_\_\_\_\_, 1986, before me a Notary Public in and for said State and County, came Max L. Herzet, Senior Vice-President, on behalf of Mid-Kansas Federal Savings and Loan Association, to me personally known to be the same person who executed the foregoing instrument of writing and duly acknowledged the execution of the same. In testimony whereof I have hereunto set my hand and affixed my notarial seal. In the day and year above written.

\_\_\_\_\_, Notary Public  
My Appointment Expires: \_\_\_\_\_

This plat of "TEAL COVE SECOND" has been submitted to and approved by the Wichita-Sedgwick County Metropolitan Area Planning Commission, Wichita, Kansas.

Dated this \_\_\_\_\_ day of \_\_\_\_\_, 1986.

WICHITA-SEDGWICK COUNTY METROPOLITAN AREA PLANNING COMMISSION

\_\_\_\_\_, Chairman

\_\_\_\_\_, Secretary

This plat approved and all dedications shown hereon, if any, accepted by the City Commission of the City of Wichita, Kansas, this \_\_\_\_\_ day of \_\_\_\_\_, 1986.

\_\_\_\_\_, Mayor

\_\_\_\_\_, City Clerk

Entered on transfer record this \_\_\_\_\_ day of \_\_\_\_\_, 1986.

\_\_\_\_\_, County Clerk

STATE OF KANSAS      SS:  
COUNTY OF SEDGWICK

This is to certify that this instrument was filed for record in the Register of Deeds Office at \_\_\_\_\_, 1986.

\_\_\_\_\_, Register of Deeds

\_\_\_\_\_, Deputy

SOME DIMENSIONS  
AND BEARINGS  
HAVE BEEN REVISED  
ON THIS COPY

6-9-86