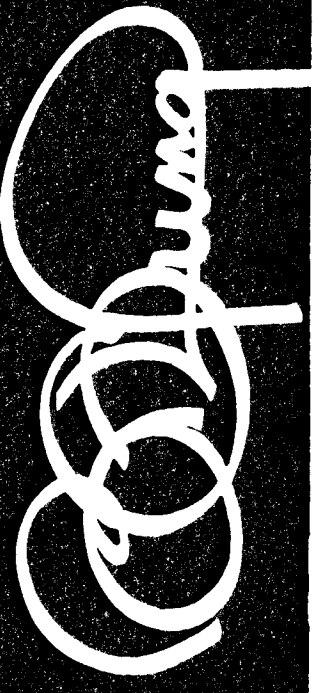


Paving Rushwood 81480
 Sols 093 (81474)
 Lot 17-9-23
 21473
 Amend 33
 Petition to
 reflect new
 Plat. Enter
 ss to amend
 all lots.



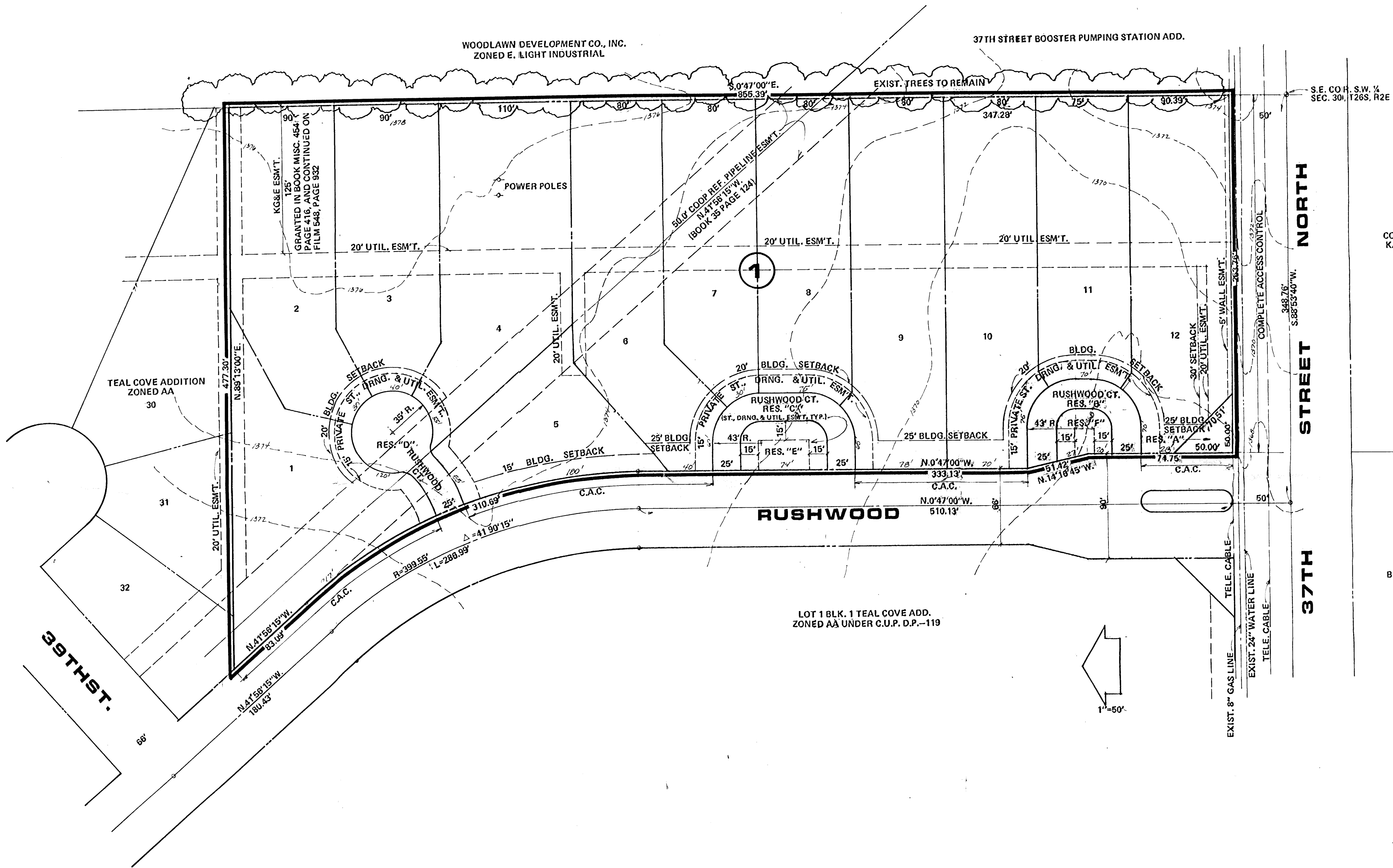
BILL G. YUNG DESIGN
 8225 E. 35TH ST. NORTH, WICHITA, KS. 67226
 316-683-5567

date OCT. 10, 1985
 rev.

sheet title
 PRELIMINARY PLAT

project
 TEAL COVE 2ND ADD.

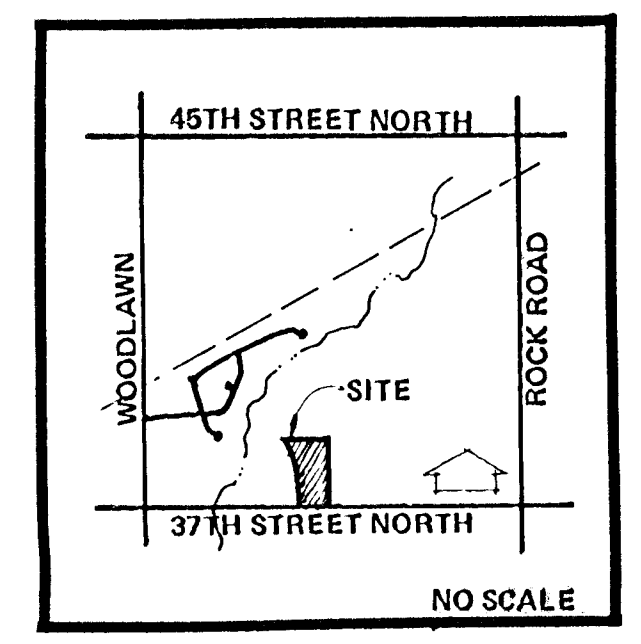
sheet
 of



COMOTARA SUBSTATION ADD.
 KANSAS GAS & ELECTRIC CO.

NOTES:

1. DRAINAGE CONCEPT PLAN TO BE SUBMITTED BY M.K.E.C. TO CITY ENGINEER.
2. SETBACKS AS SHOWN OR AS PER GENERAL PROVISION NO. 17 OF C.U.P. D.P.-119.
3. RESERVE "A" IS FOR UTILITIES, DRNG., LANDSCAPING, IRRIGATION, ENTRY MONUMENTS AND/OR WALLS.
4. RESERVES "B", "C" & "D" ARE FOR 21' B. TO B. PRIVATE STREETS, DRAINAGE AND UTILITIES.
5. RESERVES "E" & "F" ARE FOR UTILITIES, DRNG., LANDSCAPING, IRRIGATION AND WALLS.
6. ALL RESERVES ARE TO BE OWNED AND MAINTAINED BY A HOMEOWNERS ASSOCIATION.
7. 25' R.O.W. TO HAVE A 21' B. TO B. STREET.
8. BENCH MARK: CITY STD. 30' N. & 34' W. OF 1/4 SEC. COR. AT 37TH STREET NORTH AND GOVERNEOUR, ELEV. 185.54.



LOCATION MAP

PRELIMINARY PLAT

TEAL COVE 2ND ADD.

(REPLAT OF LOT 33 BLOCK 1 TEAL COVE ADD.)

OWNER: WILLIAM L. OLIVER, JR., 8 LAKESIDE BLVD., WICHITA, KS 67207