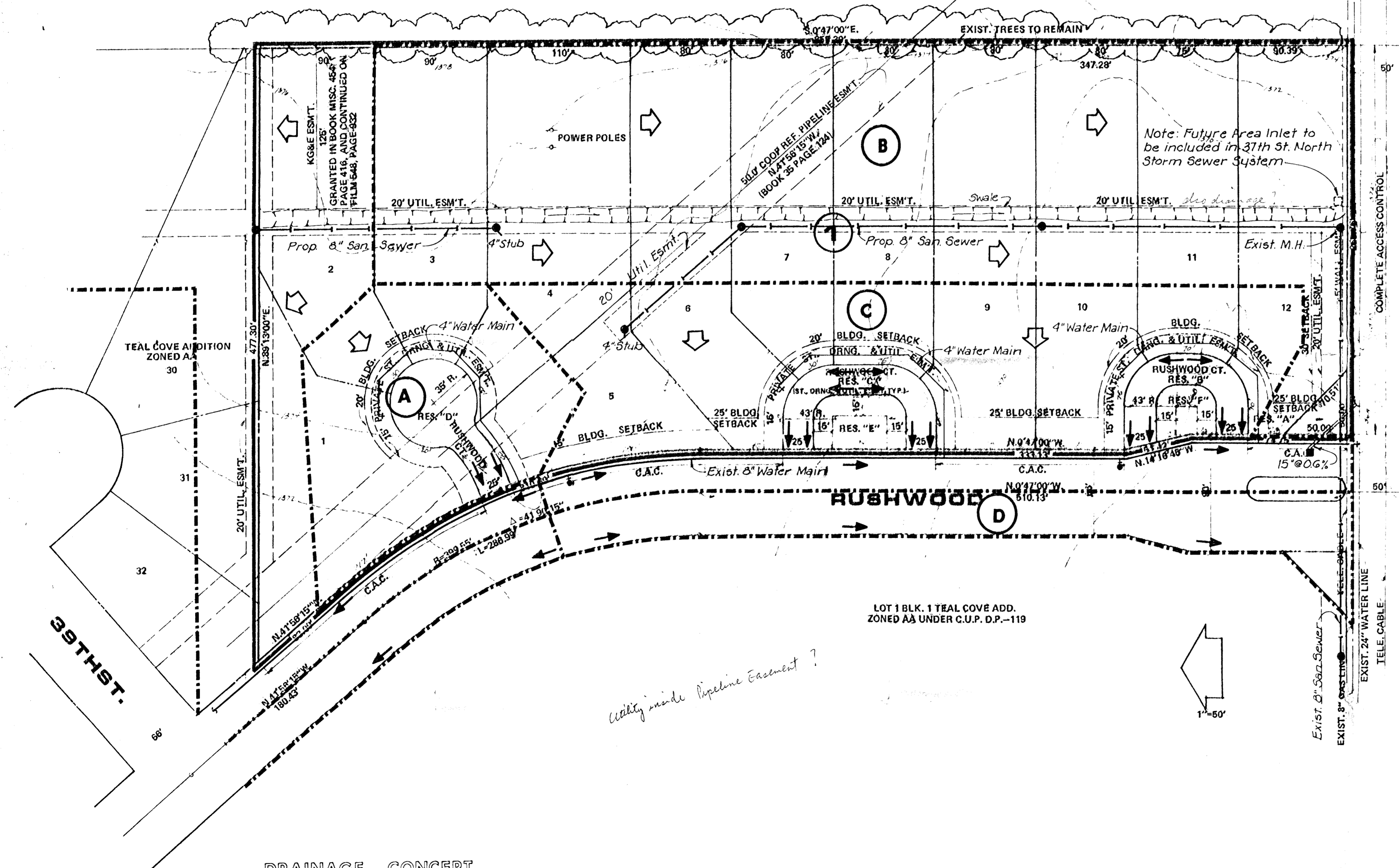


WOODLAWN DEVELOPMENT CO., INC.
ZONED E. LIGHT INDUSTRIAL

37TH STREET BOOSTER PUMPING STATION ADD.



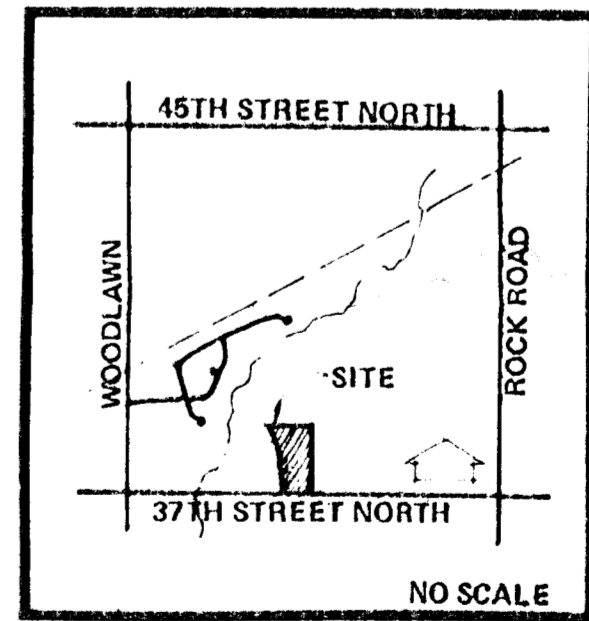
S.E. COR. S.W. 1/4
SEC. 30, T26S, R2E

COMOTARA SUBSTATION ADD.
KANSAS GAS & ELECTRIC CO.

NOTES:

1. DRAINAGE CONCEPT PLAN TO BE SUBMITTED BY M.K.E.C. TO CITY ENGINEER.
2. SETBACKS AS SHOWN OR AS PER GENERAL PROVISION NO. 17 OF C.U.P. D.P.-119.
3. RESERVE "A" IS FOR UTILITIES, DRNG., LANDSCAPING, IRRIGATION, ENTRY MONUMENTS AND/OR WALLS.
4. RESERVES "B", "C" & "D" ARE FOR 21' B. TO B. PRIVATE STREETS, DRAINAGE AND UTILITIES.
5. RESERVES "E" & "F" ARE FOR UTILITIES, DRNG., LANDSCAPING, IRRIGATION AND WALLS.
6. ALL RESERVES ARE TO BE OWNED AND MAINTAINED BY A HOMEOWNERS ASSOCIATION.
7. 25' R.O.W. TO HAVE A 21' B. TO B. STREET.
8. BENCH MARK: CITY STD. 30' N. & 34' W. OF 1/4 SEC. COR. AT 37TH STREET NORTH AND GOVERNEOUR, ELEV. 185.64.

BRUSH CREEK ADDITION
ZONED AA



LOCATION MAP

DRAINAGE CONCEPT
AND UTILITY LAYOUT

TEAL COVE 2ND ADD.

(REPLAT OF LOT 33 BLOCK 1 TEAL COVE ADD.)

OWNER: WILLIAM L. OLIVER, JR., 8 LAKESIDE BLVD., WICHITA KS 67207

MID-KANSAS ENGINEERING CONSULTANTS PA
3500 NORTH ROCK ROAD
BUILDING #800
WICHITA, KANSAS 67226

