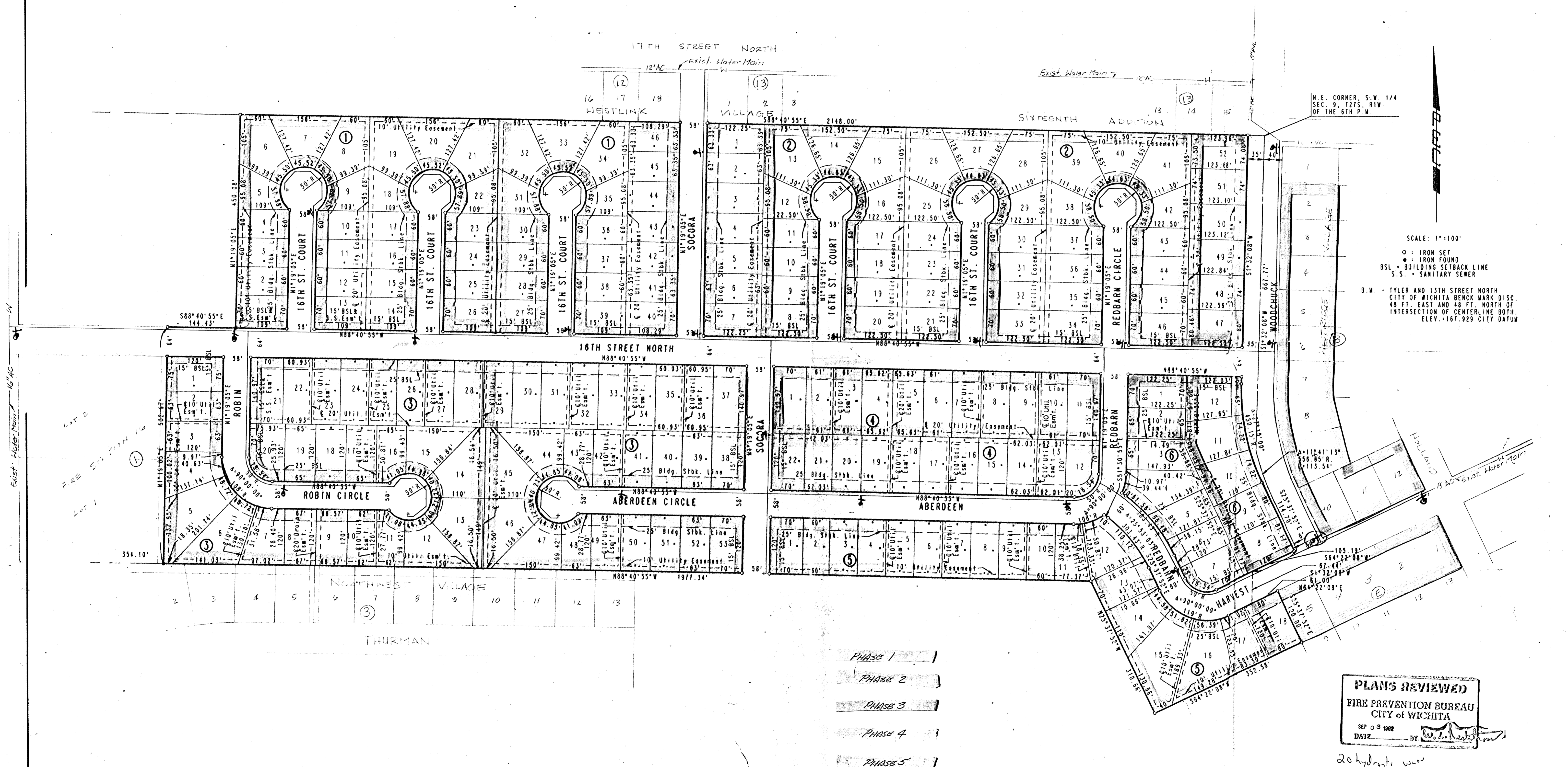


# SOCORA VILLAGE

## AN ADDITION TO WICHITA, SEDGWICK COUNTY, KANSAS



SCALE: 1"=100'

○ = IRON SET  
 ● = IRON FOUND  
 BSL = BUILDING SETBACK LINE  
 S.S. = SANITARY SEWER

B.M. - TYLER AND 13TH STREET NORTH  
 CITY OF WICHITA BENCH MARK DISC.  
 48 FT. EAST AND 48 FT. NORTH OF  
 INTERSECTION OF CENTERLINE BOTH.  
 ELEV. -167.929 CITY DATUM

- PHASE 1
- PHASE 2
- PHASE 3
- PHASE 4
- PHASE 5

**PLANS REVIEWED**  
 FIRE PREVENTION BUREAU  
 CITY OF WICHITA  
 SEP 03 1982  
 DATE BY *[Signature]*

20 hydrants w/w