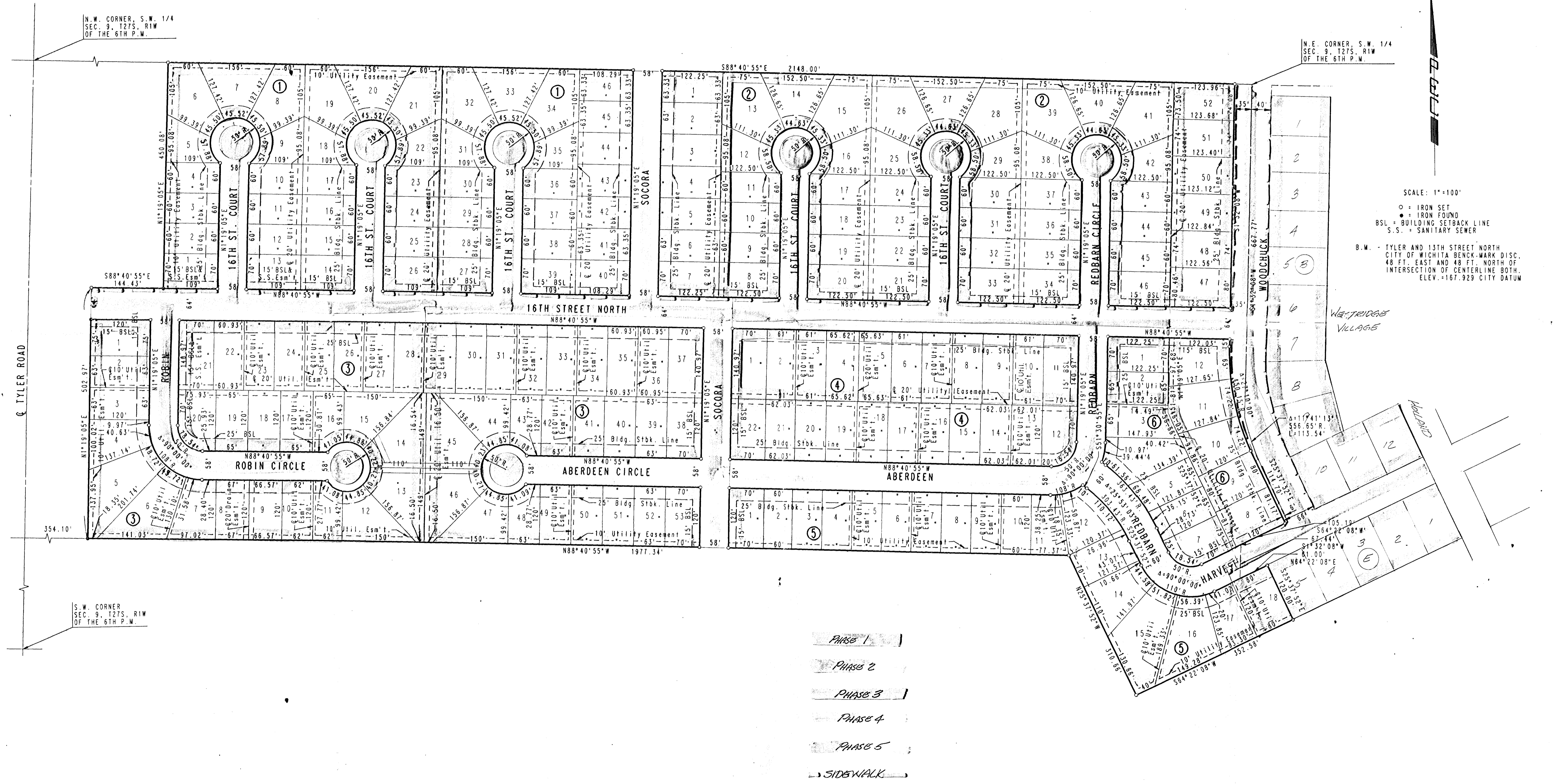


# SOCORA VILLAGE

## AN ADDITION TO WICHITA, SEDGWICK COUNTY, KANSAS



N.W. CORNER, S.W. 1/4  
SEC. 9, T27S, R1W  
OF THE 6TH P.M.

N.E. CORNER, S.W. 1/4  
SEC. 9, T27S, R1W  
OF THE 6TH P.M.

SCALE: 1"=100'  
 ○ = IRON SET  
 ● = IRON FOUND  
 BSL = BUILDING SETBACK LINE  
 S.S. = SANITARY SEWER  
 B.M. = TYLER AND 13TH STREET NORTH  
 CITY OF WICHITA BENCH-MARK DISC.  
 48 FT. EAST AND 48 FT. NORTH OF  
 INTERSECTION OF CENTER LINE BOTH.  
 ELEV. = 167.929 CITY DATUM

- PHASE 1
- PHASE 2
- PHASE 3
- PHASE 4
- PHASE 5
- SIDWALK

S.W. CORNER  
SEC. 9, T27S, R1W  
OF THE 6TH P.M.