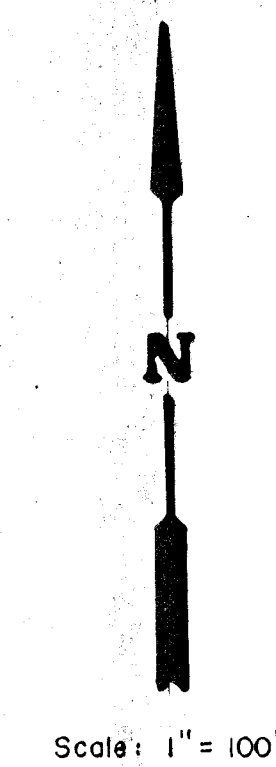
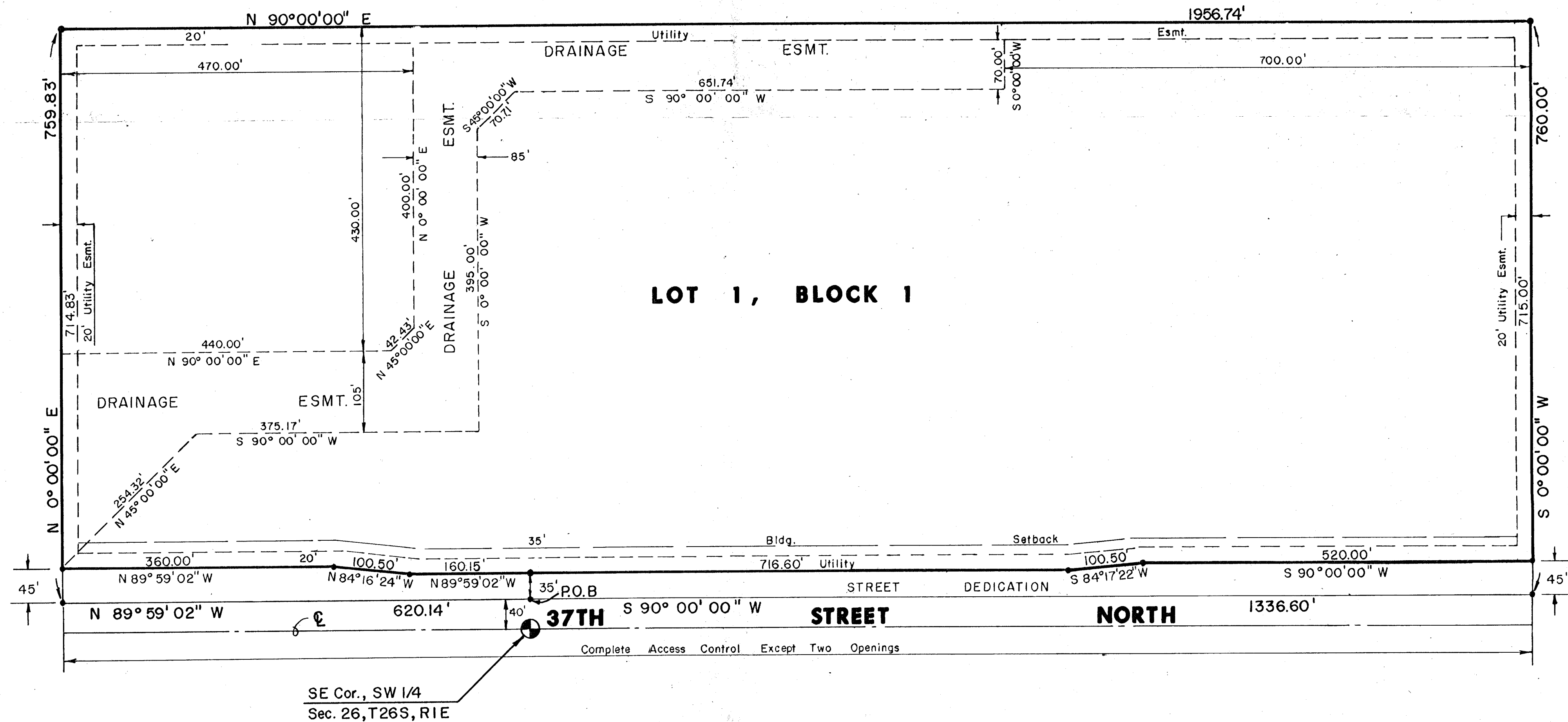


# FINAL PLAT OF KOCH OFFICE PARK THIRD ADDITION

AN ADDITION TO WICHITA, SEDGWICK COUNTY, KANSAS



This plat of "KOCH OFFICE PARK THIRD ADDITION" has been submitted to and approved by the Wichita-Sedgwick County Metropolitan Area Planning Commission, Wichita, Kansas.

Dated this 7th day of December, 1989.

WICHITA-SEDGWICK COUNTY METROPOLITAN AREA PLANNING COMMISSION

Wayne L. Brinegar, Chairman

Marvin S. Krout, Secretary

This plat approved and all dedications shown hereon, if any, accepted by the City Council of the City of Wichita, Kansas, this \_\_\_ day of \_\_\_, 1990.

Bob Knight, Mayor

John Motr, City Clerk

Entered on transfer record this \_\_\_ day of \_\_\_, 1990.

Don Wright, County Clerk

STATE OF KANSAS )  
SEDGWICK COUNTY ) ss:

This is to certify that this instrument was filed for record in the Register of Deeds office this \_\_\_ day of \_\_\_, 1990.

Pat Kettler, Register of Deeds

Ed Resa, Deputy

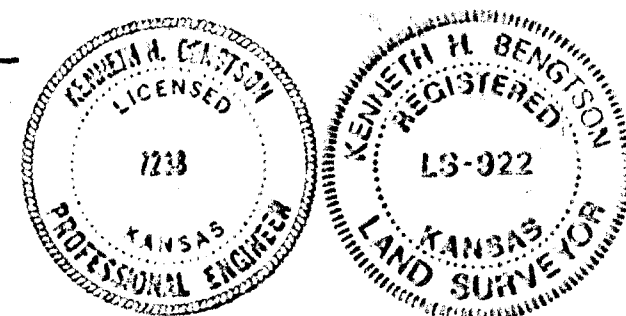
I, Kenneth H. Bengtson, a Civil Engineer and Registered Land Surveyor in Kansas, do hereby certify that I have been in responsible charge of surveying and platting of "KOCH OFFICE PARK THIRD ADDITION" an addition to Wichita, Sedgwick County, Kansas, into a Lot, a Block, and a Street, the same being accurately set forth in the accompanying plat and described herein:

Commencing at the Southeast corner of the Southwest Quarter of Section 26, Township 26 South, Range 1 East of the 6th P.M. Sedgwick County, Kansas; thence N 00° 12' 08" E, 40.00 feet to the point of beginning; thence N 89° 59' 02" W, 620.14 feet; thence N 00° 00' 00" E, 759.83 feet; thence N 90° 00' 00" E, 1956.74 feet; thence S 00° 00' 00" W, 760.00 feet; thence S 90° 00' 00" W, 1336.60 feet to the point of beginning.

The Floodway Reserve Agreement, recorded on Film 452, Page 165, is hereby vacated and replatted by virtue of K.S.A. 12-512(b).

I hereby certify that the details of this plat are correct to the best of my knowledge and belief this 12 day of February, 1990.

Kenneth H. Bengtson  
Kenneth H. Bengtson, P.E., R.L.S. #922  
Mid-Kansas Engineering Consultants, P.A.  
3500 N. Rock Road, Building #800  
Wichita, KS 67226



Know all men by these presents that we the undersigned property owners of the land as above set forth in the Land Surveyor's and Civil Engineer's Certificate, have caused the same to be surveyed and platted into a lot, a block, and a street, the same to be known as "KOCH OFFICE PARK THIRD ADDITION", an addition to Wichita, Sedgwick County, Kansas. The street is hereby dedicated to and for the use of the public. Easements for the construction and maintenance of drainage and public utilities as indicated on the accompanying plat are hereby granted to the City of Wichita. The drainage easement shall be the responsibility of the owners of Lot 1, Block 1 for the maintenance and improvements of the drainage, provided further, that no structure shall be constructed on or within said drainage easement, nor shall any fill, change of grade, creation of channel or other work be carried on without the permission of the City Engineer. All abutters' rights of access to or from 37th Street North, over and across the South line of Lot 1, Block 1, are hereby granted to the City of Wichita, provided however, that Lot 1, Block 1, shall have access to 37th Street North at two locations to be determined by the City Engineer.

KOCH INDUSTRIES, INC.

BY: C.J. Nelson  
C.J. Nelson, Company Treasurer

STATE OF KANSAS )  
SEDGWICK COUNTY ) ss:

BE IT REMEMBERED, that on this 12th day of February, 1990, before me, a Notary Public in and for the County and State aforesaid, came C.J. Nelson, Company Treasurer of Koch Industries, Inc., to me personally known to be the same persons who executed the foregoing instrument of writing and duly acknowledged the execution of the same.

IN WITNESS WHEREOF, I have hereunto set my hand and affixed my official seal, the day and year last above written.

Marcia S. McGee  
Notary Public Marcia S. McGee  
My Appointment Expires: 4/21/92

