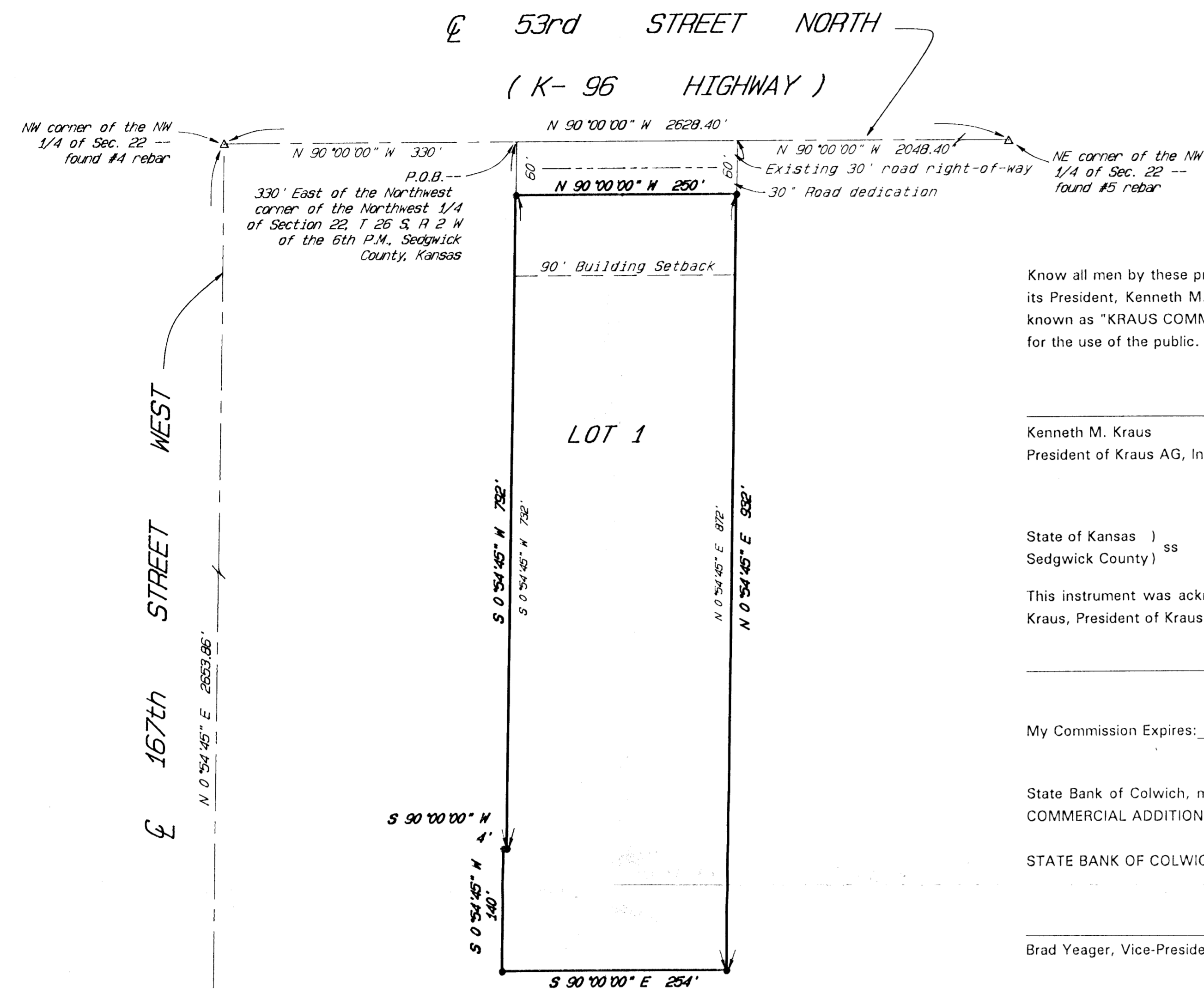


# "KRAUS COMMERCIAL ADDITION" TO SEDGWICK COUNTY, KANSAS



Know all men by these presents that Kraus AG, Inc., owner of the land described in the Surveyor's Certificate, by its President, Kenneth M. Kraus, has caused the same to be surveyed and platted into a Lot and a Street, to be known as "KRAUS COMMERCIAL ADDITION" to Sedgwick County, Kansas. The street is hereby dedicated to and for the use of the public.

\_\_\_\_\_  
Kenneth M. Kraus  
President of Kraus AG, Inc.

State of Kansas )  
Sedgwick County ) ss

This instrument was acknowledged before me this \_\_\_\_\_ day of \_\_\_\_\_, 1996, by Kenneth M. Kraus, President of Kraus AG, Inc.

\_\_\_\_\_, Notary Public

My Commission Expires: \_\_\_\_\_

State Bank of Colwich, mortgagee on the land being platted herein, does hereby consent to this plat of "KRAUS COMMERCIAL ADDITION" to Sedgwick County, Kansas.

STATE BANK OF COLWICH

\_\_\_\_\_  
Brad Yeager, Vice-President

State of Kansas )  
Sedgwick County ) ss

The foregoing instrument was acknowledged before me this \_\_\_\_\_ day of \_\_\_\_\_, 1996, by Brad Yeager, Vice-President of State Bank of Colwich, on behalf of the Bank.

\_\_\_\_\_, Notary Public

My Commission Expires: \_\_\_\_\_

This plat approved and all dedications shown hereon accepted by the Board of County Commissioners of Sedgwick County, Kansas, this \_\_\_\_\_ day of \_\_\_\_\_, 1996.

BOARD OF COUNTY COMMISSIONERS

\_\_\_\_\_, Chairman  
Thomas G. Winters

\_\_\_\_\_, Chair Pro Tem  
Melody C. Miller

\_\_\_\_\_, Commissioner  
Betsy Gwin

\_\_\_\_\_, Commissioner  
Paul W. Hancock

\_\_\_\_\_, Commissioner  
Mark F. Schroeder

Attest: \_\_\_\_\_, County Clerk  
Susan E. Crockett-Spoon

This plat of "KRAUS COMMERCIAL ADDITION" to Sedgwick County, Kansas, has been submitted to and approved by the Wichita-Sedgwick County Metropolitan Area Planning Commission, Wichita, Kansas.

Dated this \_\_\_\_\_ day of \_\_\_\_\_, 1996.

WICHITA-SEDGWICK COUNTY  
METROPOLITAN AREA PLANNING COMMISSION

\_\_\_\_\_, Chairman  
Susan Osborne-Howes

\_\_\_\_\_, Secretary  
Marvin S. Krout

This plat approved and all dedications shown hereon are accepted by the City Council of the City of Wichita, Kansas, this \_\_\_\_\_ day of \_\_\_\_\_, 1996.

WICHITA CITY COUNCIL

\_\_\_\_\_, Mayor  
Bob Knight

\_\_\_\_\_, Deputy City Clerk  
Pat Burnett

Entered on transfer record this \_\_\_\_\_ day of \_\_\_\_\_, 1996.

\_\_\_\_\_, County Clerk  
Susan E. Crockett-Spoon

State of Kansas )  
Sedgwick County ) ss

This is to certify that this instrument was filed for record in the Register of Deeds Office on the \_\_\_\_\_ day of \_\_\_\_\_, 1996, at \_\_\_\_\_ o'clock \_\_\_\_\_ M.

\_\_\_\_\_, Register of Deeds  
Pat Kettler

\_\_\_\_\_, Chief Deputy  
Ed Resa

SCALE: 1" = 100'

LEGEND:  
 Δ = Section corner -- found as noted  
 ● = #4 Rebar with ID cap "TILSI CL522" -- set  
 Bearing Basis Assumed

State of Kansas )  
Sedgwick County ) ss  
 Terra Tech Land Surveying, Inc., a corporation registered and authorized to practice Land Surveying in the State of Kansas, hereby certifies that it has surveyed and platted "KRAUS COMMERCIAL ADDITION" to Sedgwick County, Kansas, and the accompanying plat is a true and correct exhibit of such survey described as:

A tract of land in the Northwest Quarter of Section 22, Township 26 South, Range 2 West of the Sixth Principal Meridian, Sedgwick County, Kansas, being more particularly described as follows: **BEGINNING** at a point on the North line and 330 feet East of the Northwest corner of said Northwest Quarter; thence Southerly, parallel with the West line of said Northwest Quarter, 792 feet; thence Westerly, parallel with the North line of said Northwest Quarter, 4 feet; thence Southerly, parallel with said West line, 140 feet; thence Easterly, parallel with said North line, 254 feet; thence Northerly, parallel with said West line, 932 feet to a point on the North line of said Northwest Quarter; thence Westerly, on said North line, 250 feet to the **POINT OF BEGINNING**.

TERRA TECH LAND SURVEYING, INC.

Arthur G. Griffiths LS #244



Date \_\_\_\_\_

TERRA TECH  
LAND SURVEYING INC.

239 North Ohio  
Wichita, Kansas 67214-3939  
(316) 267-5754 / (316) 267-2549  
Fax (316) 267-2738