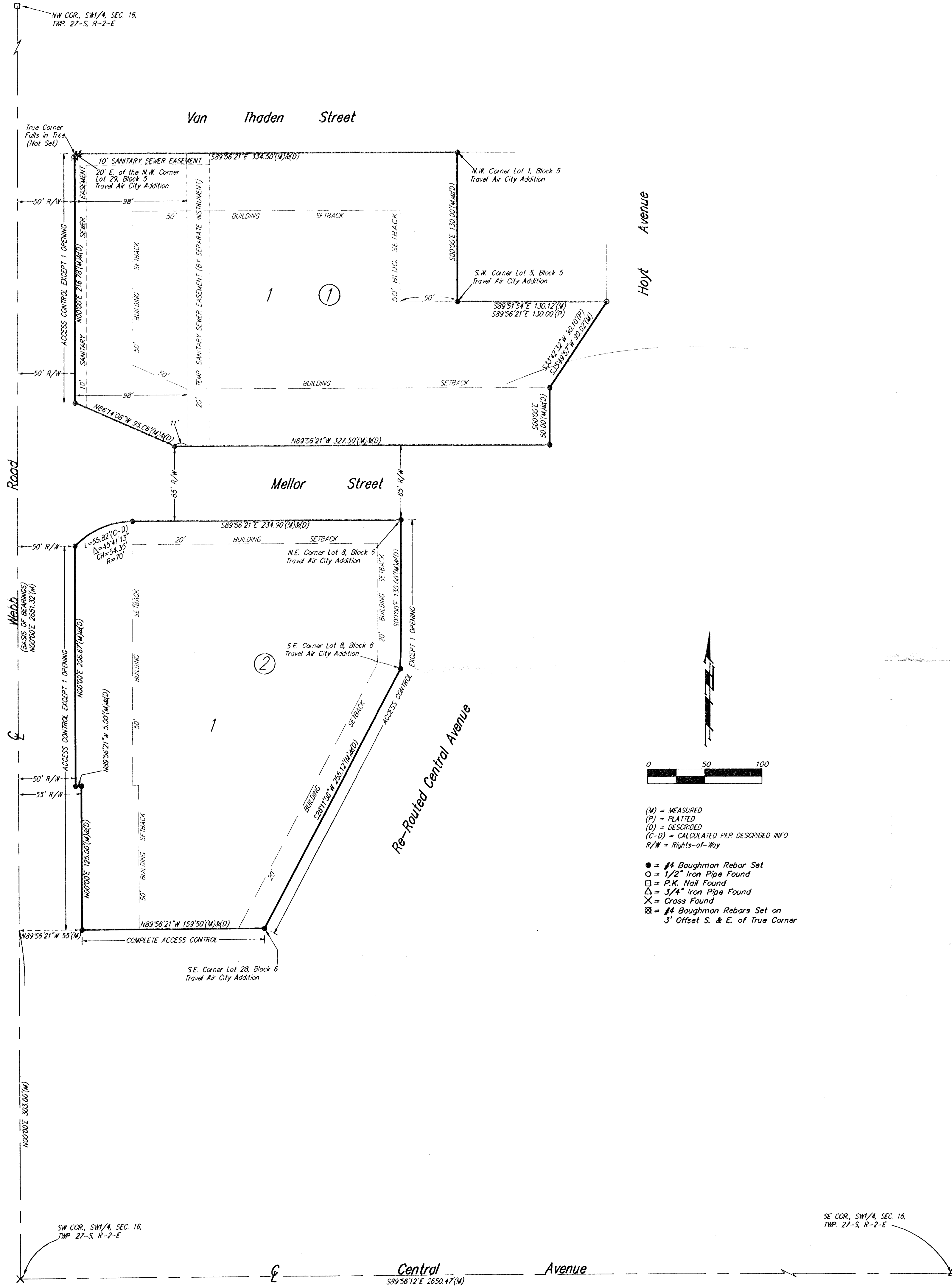


# KUHLMAN ADDITION WICHITA, SEDGWICK COUNTY, KANSAS



State of Kansas) SS  
 Sedgwick County) We, Baughman Company, P.A. Surveyors in aforesaid County and State do hereby certify that we have surveyed and platted "KUHLMAN ADDITION", Wichita, Sedgwick County, Kansas and that the accompanying plat is a true and correct exhibit of the property surveyed, described as follows: All of Lots 6, 7, 8, 9, 10, 11, 12, 13, 14, 15, 16, 17, 18, 19, 20, 21, 22, 23, 24, 25, 26, 27, 28, 29, 30, 31, 32, 33, 34, 35, 36, 37 and 38, Block 5, Travel Air City, Sedgwick County, Kansas, EXCEPT that portion condemned for right-of-way in District Court Case A-7710, TOGETHER with all of Lots 8, 9, 10, 11, 12, 13, 14, 15, 16, 17, 18, 19, 20, 21, 22, 23, 24, 25, 26, 27, and 28, Block 6, Travel Air City, Sedgwick County, Kansas, EXCEPT that portion condemned for right-of-way in District Court Case A-7710, TOGETHER with a tract in the SW1/4 of Sec. 16, Twp. 27-S, R-2-E of the 6th P.M., Sedgwick County, Kansas described as beginning at the NE corner of Lot 20, Block 6, Travel Air City, Sedgwick County, Kansas; thence east along the south line of Lots 12, 11, 10, 9, and 8, Block 6 of said addition to the SW corner of Lot 7, Block 6, Travel Air City; thence southwesterly to the SE corner of Lot 28, Block 6, Travel Air City; thence north along the east line of Lots 28, 27, 26, 25, 24, 23, 22, 21, and 20, Block 6, to the NE corner of Lot 20, Block 6, being the point of beginning.

All being situated in the SW1/4 of Sec. 16, Twp. 27-S, R-2-E of the 6th P.M., Sedgwick County, Kansas.

Existing public easements and dedications being vacated by virtue of K.S.A. 12-512(b).

Baughman Company, P.A.

*Lenny D. Wood* 1058 9/30/1998, Surveyor  
 Lenny D. Wood

Know all men by these presents that we, the undersigned, have caused the land in the surveyor certificate to be platted into Lots, Blocks, to be known as "KUHLMAN ADDITION", Wichita, Sedgwick County, Kansas. The sanitary sewer easements are hereby granted as indicated for the construction and maintenance of a sanitary sewer system. All abutters rights of access are hereby granted as indicated on the face of the plat to the City of Wichita, Kansas provided, however, that the location of all openings shall be determined by the City Engineer of the City of Wichita, Kansas.

*Larry K. Kuhlman* *Marilyn K. Kuhlman*  
 Larry K. Kuhlman Marilyn K. Kuhlman

State of Kansas) SS  
 Sedgwick County) The foregoing instrument acknowledged before me, this 6<sup>th</sup> day of October, 1998, by Larry K. Kuhlman and Marilyn K. Kuhlman, husband and wife.

JUDITH M. TERHUNE  
 Notary Public - State of Kansas  
 My App'l. Exp. 11-7-2001  
*Judith M. Terhune*, Notary Public

We the undersigned, holders of a mortgage on the above described property, do hereby consent to this plat of "KUHLMAN ADDITION", Wichita, Sedgwick County, Kansas.  
 Intrust Bank, N.A.

*Thomas G. Lambert* Vice President  
 THOMAS G. LAMBERT (Title)

State of Kansas) SS  
 Sedgwick County) The foregoing instrument acknowledged before me, this 9<sup>th</sup> day of OCTOBER, 1998, by THOMAS G. LAMBERT, VICE-PRESIDENT of the Intrust Bank, N.A., on behalf of the bank.

JUDITH M. TERHUNE  
 Notary Public - State of Kansas  
 My App'l. Exp. 11-7-2001  
*Judith M. Terhune*, Notary Public

This plat of "KUHLMAN ADDITION", Wichita, Sedgwick County, Kansas has been submitted to and approved by the Wichita-Sedgwick County Metropolitan Area Planning Commission, Wichita, Kansas.  
 Dated this \_\_\_\_\_ day of \_\_\_\_\_, 1998.  
 Wichita-Sedgwick County Metropolitan Area Planning Commission

\_\_\_\_\_  
 Richard E. Lopez, Chairman

\_\_\_\_\_  
 Marvin S. Krout, Secretary

This plat approved and all dedications shown hereon accepted by the City Council of the City of Wichita, Kansas, this \_\_\_\_\_ day of \_\_\_\_\_, 1998.

\_\_\_\_\_  
 Bob Knight, Mayor

\_\_\_\_\_  
 Pat Burnett, City Clerk

Entered on transfer record this \_\_\_\_\_ day of \_\_\_\_\_, 1998.

\_\_\_\_\_  
 James Allford, County Clerk

State of Kansas) SS  
 Sedgwick County) This is to certify that this plat has been filed for record in the office of the Register of Deeds, this \_\_\_\_\_ day of \_\_\_\_\_, 1998, at \_\_\_\_\_ o'clock \_\_\_\_\_ M.; and is duly recorded.

\_\_\_\_\_  
 Bill Meek, Register of Deeds

\_\_\_\_\_  
 Linda Kizzire, Deputy