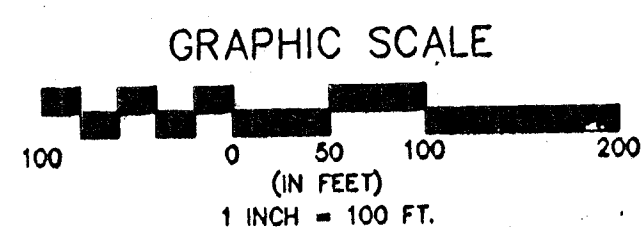
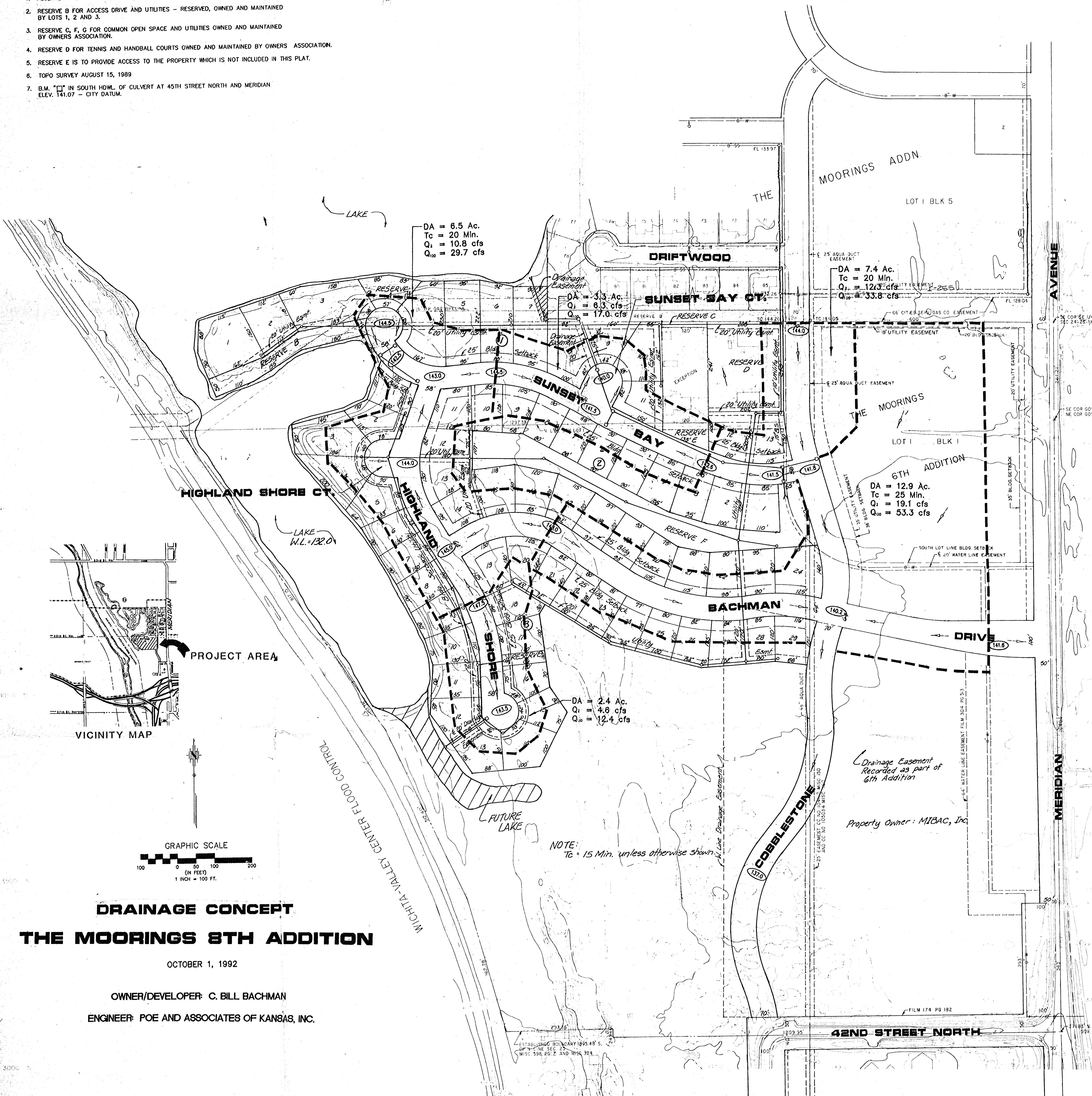


1. RESERVE A FOR BOAT DOCK - RESERVED, OWNED AND MAINTAINED BY SELECT LOTS
2. RESERVE B FOR ACCESS DRIVE AND UTILITIES - RESERVED, OWNED AND MAINTAINED BY LOTS 1, 2 AND 3.
3. RESERVE C, F, G FOR COMMON OPEN SPACE AND UTILITIES OWNED AND MAINTAINED BY OWNERS ASSOCIATION.
4. RESERVE D FOR TENNIS AND HANDBALL COURTS OWNED AND MAINTAINED BY OWNERS ASSOCIATION.
5. RESERVE E IS TO PROVIDE ACCESS TO THE PROPERTY WHICH IS NOT INCLUDED IN THIS PLAT.
6. TOPO SURVEY AUGUST 15, 1989
7. B.M. "1" IN SOUTH HWY. OF CULVERT AT 45TH STREET NORTH AND MERIDIAN ELEV. 141.07 - CITY DATUM.



# DRAINAGE CONCEPT

## THE MOORINGS 8TH ADDITION

OCTOBER 1, 1992

OWNER/DEVELOPER: C. BILL BACHMAN  
 ENGINEER: POE AND ASSOCIATES OF KANSAS, INC.

NOTE: Tc = 15 Min. unless otherwise shown.

Drainage Easement Recorded as part of 6th Addition  
 Property Owner: MIBAC, Inc.

42ND STREET NORTH