

NEVILLE WEST ADDITION

WICHITA, SEDGWICK COUNTY, KANSAS

State of Kansas) SS
Sedgwick County)

State of Kansas) SS
Sedgwick County)

We, Savoy, Ruggles & Bohm, P.A., Surveyors in aforesaid county and state do hereby certify that, under the supervision of the undersigned, we have surveyed and platted "NEVILLE WEST ADDITION", Wichita, Sedgwick County, Kansas and that the accompanying plat is a true and correct exhibit of the property surveyed, described as and being a plat of the following:

The foregoing instrument acknowledged before me, this _____ day of _____, 1999, by Gregory Alan Neville, Alvin Leon Neville, Edward T. Neville and Rita A. Neville, Co-Trustees of the Neville Family Trust III dated 9-10-96, on behalf of the Trust.

Notary Public

My App't. Exp. _____

This plat of "NEVILLE WEST ADDITION", Sedgwick County Kansas, has been submitted to and approved by the Wichita-Sedgwick County Metropolitan Area Planning Commission, Wichita, Kansas. Dated this _____ day of _____, 1999.

Wichita-Sedgwick County Metropolitan Area Planning Commission

Chairman
William M. Johnson

Secretary
Marvin S. Krout

Reviewed in accordance with K.S.A. 58-2005 on this _____ day of _____, 1999.

Deputy County Surveyor
Sedgwick County Kansas
Tricia L. Robello, LS #1246

This plat approved and all dedications shown hereon, accepted by the City Council of the City of Wichita, Kansas, this _____ day of _____, 1999.

Mayor
Bob Knight

City Clerk
Pat Burnett

All Public easements and dedications being vacated by virtue of K.S.A. 12-512(b).

Savoy, Ruggles & Bohm, P.A.

Date _____

Surveyor
Mark A. Savoy RLS #788

Know all men by these presents that we, the undersigned, owners of the above described property have caused the land described in the surveyor's certificate to be platted into Lots, to be known as "NEVILLE WEST ADDITION", Wichita, Sedgwick County, Kansas. The utility easements are hereby granted as indicated for the construction and maintenance of all public utilities. Reserve "C" is hereby reserved for entry features, signage, irrigation, walls and entry monuments, walks, lighting, landscaping, berms and utilities confined to easements. Reserves "A", and "B" are hereby reserved for walls, signage, gazebos, small park structures, picnic areas/ tables with covered structures, irrigation, walks, lighting, landscaping, berms, lakes, drainage, drainage structures and utilities confined to easements. The Reserves shall be maintained by a Land Owners Association for the Addition. A drainage plan has been developed for this plat and all drainage easements, and rights-of-way shall remain at established grades or as modified with the approval of the City Engineer, and unobstructed to allow for the conveyance of stormwater. Access Controls are hereby granted to the appropriate governing body (as indicated on the face of the plat, and described in the General Provisions of C.U.P.-D.P.-241). Setbacks are as shown on the Neville Property Community Unit Plan (C.U.P., D.P.-241).

The Neville Family Trust III, dated 9-10-96.

Co-Trustee
Gregory Alan Neville

Co-Trustee
Allen Leon Neville

Co-Trustee
Edward T. Neville

Co-Trustee
Rita A. Neville

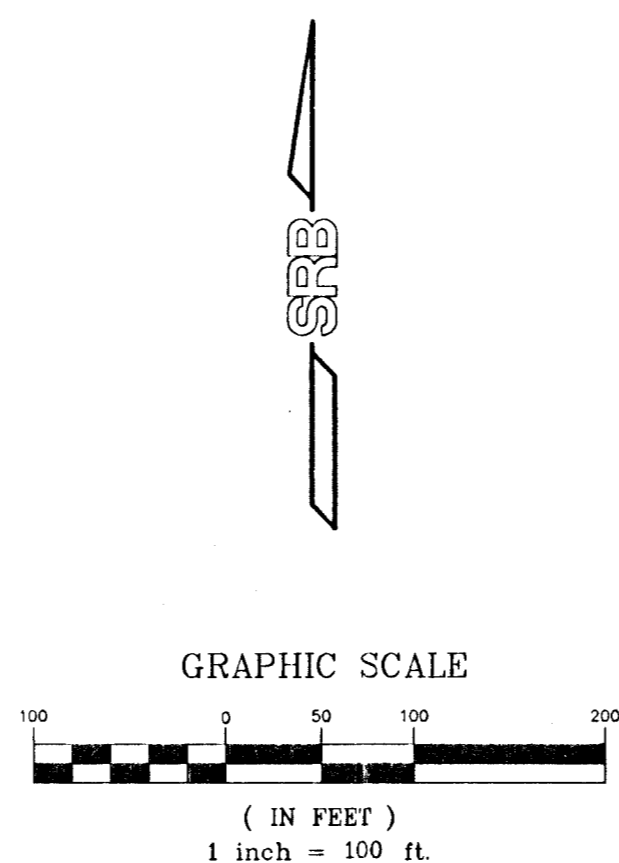
County Clerk
James Alford

State of Kansas) SS
Sedgwick County)

This is to certify that this plat has been filed for record in the office of the Register of Deeds, this _____ day of _____, 1999, at _____ o'clock _____ M. and is duly recorded.

Register of Deeds
Bill Meek

Deputy
Linda Kizzire

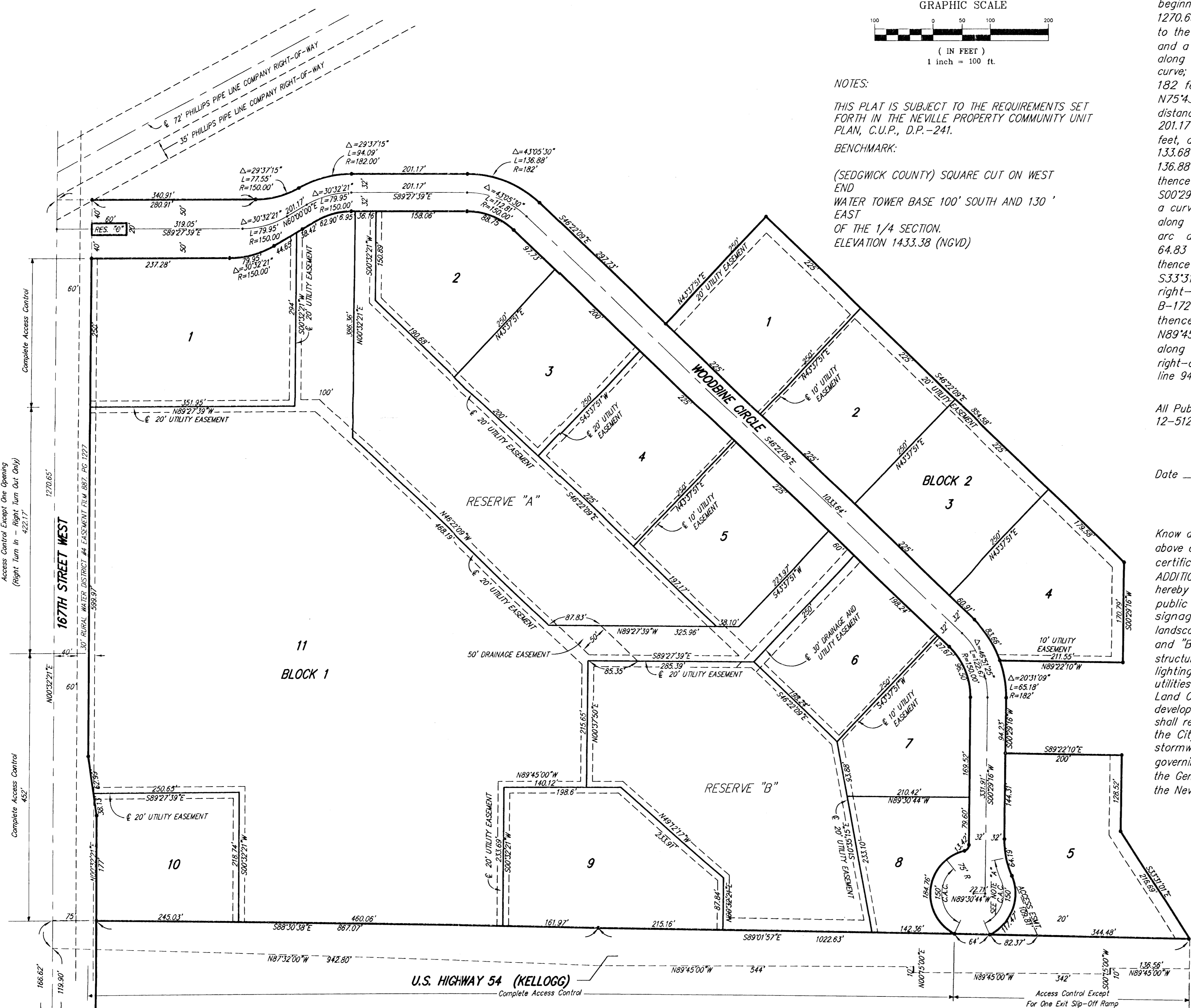


NOTES:

THIS PLAT IS SUBJECT TO THE REQUIREMENTS SET FORTH IN THE NEVILLE PROPERTY COMMUNITY UNIT PLAN, C.U.P., D.P.-241.

BENCHMARK:

(SEDGWICK COUNTY) SQUARE CUT ON WEST END
WATER TOWER BASE 100' SOUTH AND 130' EAST
OF THE 1/4 SECTION.
ELEVATION 1433.38 (NGVD)



S.W. COR. S.W. 1/4
SEC. 27-S, R2W

DWG FILE: 987P-R.J.
PROJECT NO. 9800987P

SRB 924 NORTH MAIN 316-264-8008
WICHITA, KANSAS 67203 FAX 264-4521
http://www.feist.com/~srb E-mail: srbsfeist.com
SAVOY, RUGGLES & BOHM, P. A.
ENGINEERING & SURVEYING