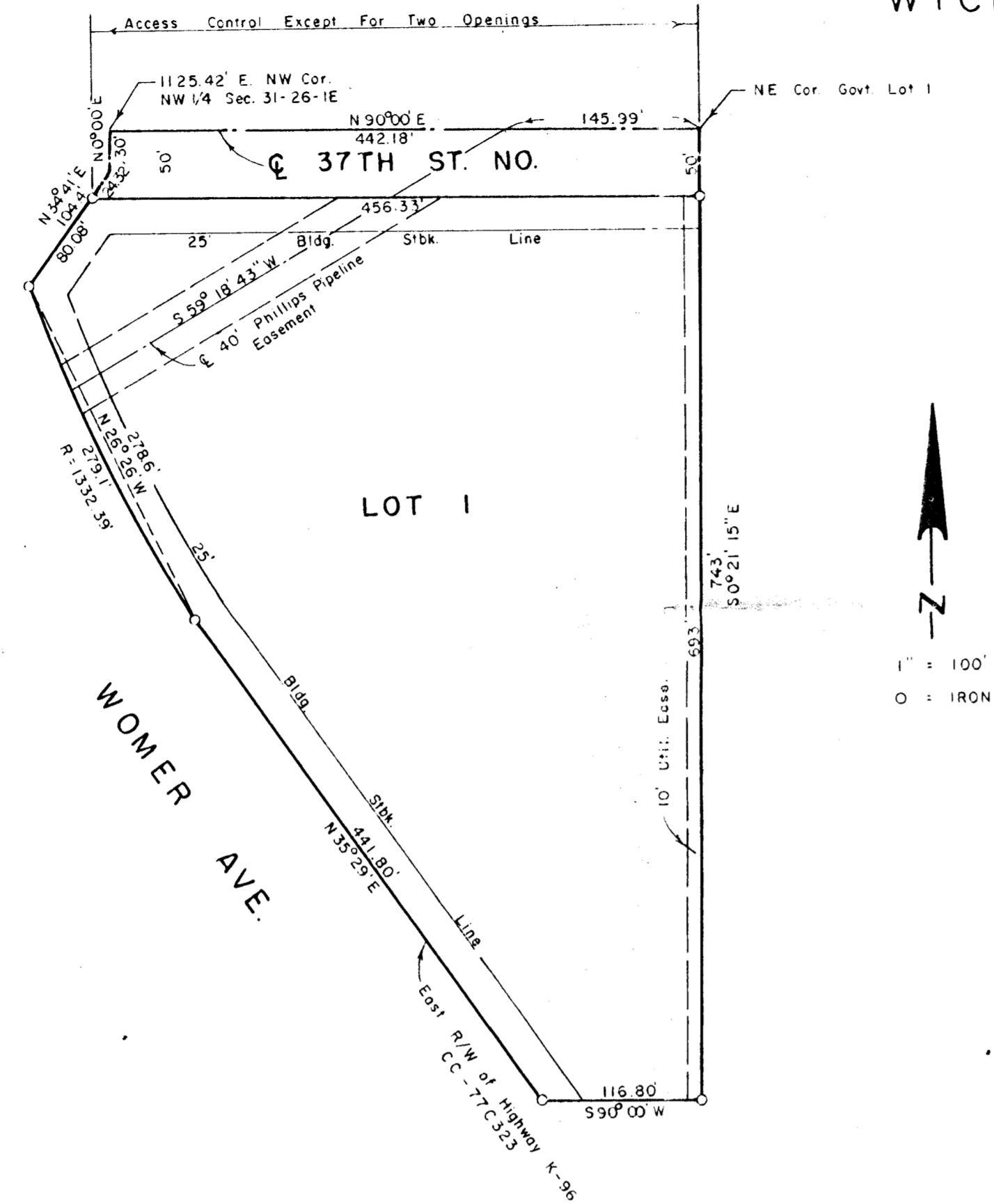


JOHN MICHENER ADDITION

WICHITA, SEDGWICK COUNTY, KANSAS



State of Kansas, County of Sedgwick, SS.

I, Lowell D. High, Land Surveyor in said State and County do hereby certify that I have surveyed and platted, "John Michener Addition", Wichita, Sedgwick County, Kansas, and that accompanying plat is a true and correct exhibit of said survey described as follows: All that Part of Government Lot 1, in the NW 1/4 of Section 31, T26S, R1E of the 6th P.M., Sedgwick County, Kansas, lying east of the easterly right of way line of Highway K-96 as taken in case number CC- 77 C 323, EXCEPT the south 150 feet, thereof.

_____, Land Surveyor

Know all men by these presents that Unified School District No. 128, by _____, President, have caused the land described in the Land Surveyor's certificate to be platted into a lot and a street as known as "John Michener Addition", Wichita, Sedgwick County, Kansas.

Utility easement as indicated on the plat is hereby granted for the construction and maintenance of all public utilities.

All abutter's rights of access to or from 37th Street North, over and across the north line of said Lot 1, are hereby granted to the appropriate governing body, provided, however, that Lot 1 shall have access to 37th Street North at two locations to be designated by the appropriate engineer.

ATTEST:

_____, City Clerk

Unified School District 128

_____, President

ATTEST:

_____, Clerk of the Board

This plat approved and all dedications shown hereon, if any, accepted by this Board of City Commissioners of the City of Wichita, Kansas this day of _____, 1987.

Robert G. Knight, Mayor

Dale E. Rea, Deputy City Clerk

State of Kansas, County of Sedgwick, SS.

This to certify that this instrument was filed for record in the Register of Deeds Office, at _____ o'clock, _____ m., on the _____ day of _____, 1987.

Pat Kettler, Register of Deeds

Ed Resa, Deputy

Entered on transfer record this _____ day of _____, 1987.

Don Wright, County Clerk

This plat of "John Michener Addition", Sedgwick County, Kansas has been submitted to and approved by the Wichita-Sedgwick County Metropolitan Area Planning Commission, Wichita, Kansas.

Dated this _____ day of _____, 1987.

Wichita-Sedgwick County Metropolitan Area Planning Commission.

John Terry Moore, Chairman

Marvin S. Krout, Secretary