

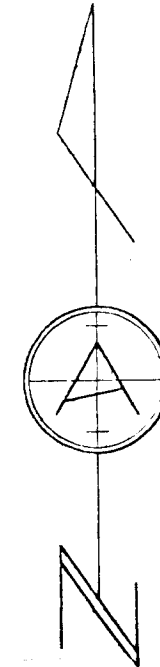
JOHN T. RAMSEY ADDITION

TO SEDGWICK COUNTY, KANSAS

State of Kansas)
 County of Sedgwick) SS

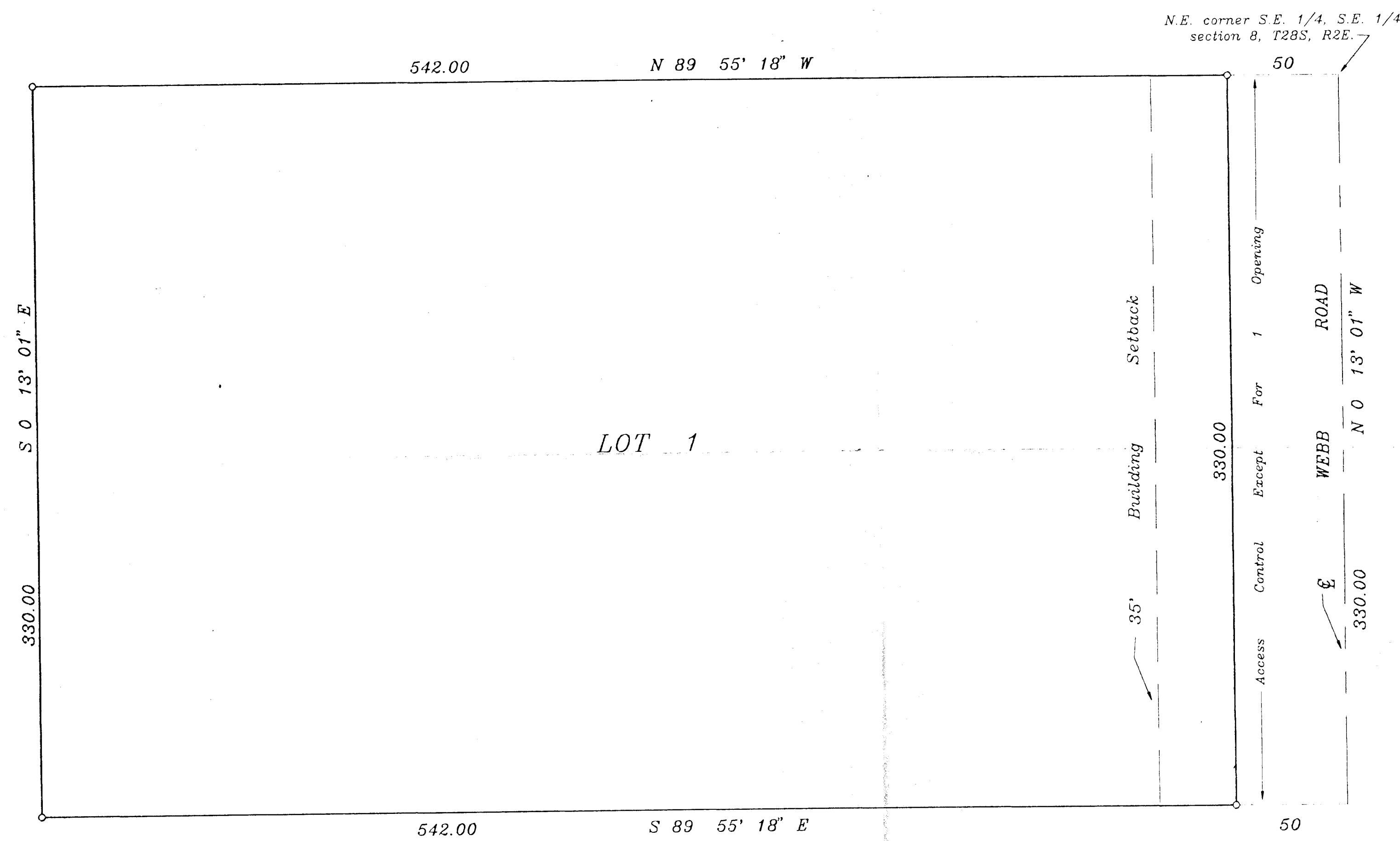
I, Donald C. Armstrong, a Registered Land Surveyor in said state and county do hereby certify that on this 21st day of Sept., 1990 I have surveyed and platted a lot and block known as "JOHN T. RAMSEY ADDITION" to Sedgwick County, Kansas, the same being described as: THE EAST 592 FEET OF THE NORTH 330 FEET OF THE SOUTHWEST QUARTER OF THE OF THE SOUTHEAST QUARTER OF SECTION 8 T28S, R2E OF THE 6TH P.M., SEDGWICK COUNTY, KANSAS.

Donald C. Armstrong
 DONALD C. ARMSTRONG L.S.#780



1" = 40'

o - 5/8" rebar set



Know all men by these presents that I, the undersigned, have caused the land described in the surveyors certificate to be platted into a Lot to be known as "JOHN T. RAMSEY ADDITION" to Sedgwick County, Kansas. The street is hereby dedicated to and for the use of the public. All abutters' rights of access to or from Webb Road over and across the east line of Lot 1 is hereby granted to the appropriate governing body, provided however that Lot 1 shall have access to Webb Road at one opening to be determined by the appropriate engineer.

Owner: *John T. Ramsey*
 John T. Ramsey

State of Kansas)
 County of Sedgwick) ss

Be it remembered that on this _____ day of _____, 1990, before me, a Notary Public in aforesaid state and county, came John T. Ramsey, to me personally known to be the same person who executed the foregoing instrument of writing and duly acknowledged the execution of same. In testimony whereof I have hereunto set my hand and affixed my notarial seal the day and year above written.

_____, Notary Public

My commission expires: _____

We the undersigned, holders of a mortgage on the above described property do hereby consent to the plat of "John T. Ramsey Addition", Sedgwick County, Kansas.

Southwest National Bank, Wichita, Kansas.
SC Dahl, *John Ramsey*
 _____ title

State of Kansas)
 County of Sedgwick) ss

The foregoing instrument acknowledged before me this _____ day of _____, 1990, by _____ of Southwest National Bank, on behalf of the bank.

_____, Notary Public

My Commission Expires _____

This plat approved and all dedications shown hereon are accepted by the city Council of the city of Wichita, Kansas. Dated this 11th day of September, 1990

Bob Knight Mayor

Pat Burnett Deputy city Clerk



This plat has been submitted to and approved by the Wichita-Sedgwick County Metropolitan Area Planning Commission, Wichita, Kansas. Dated this 11th day of Sept, 1990.

Mark F. Schroeder, Chairman
George Sherman (acting chairman)
Marvin S. Krout, Secretary

This plat approved and all dedications shown hereon accepted by the Board of County Commissioners of Sedgwick County, Kansas, this _____ day of _____, 1990.

- _____, Chairman
- _____, Chairman Pro-tem
- _____, Commissioner
- _____, Commissioner
- _____, Commissioner
- _____, County Clerk
- _____, County Clerk
- _____, County Clerk
- _____, County Clerk

State of Kansas)
 County of Sedgwick) ss

This is to certify that this plat has been filed for record in the office of the Register of Deeds this _____ day of _____, 1990, at _____ M., and is duly recorded.

_____, Register of Deeds

_____, Deputy

