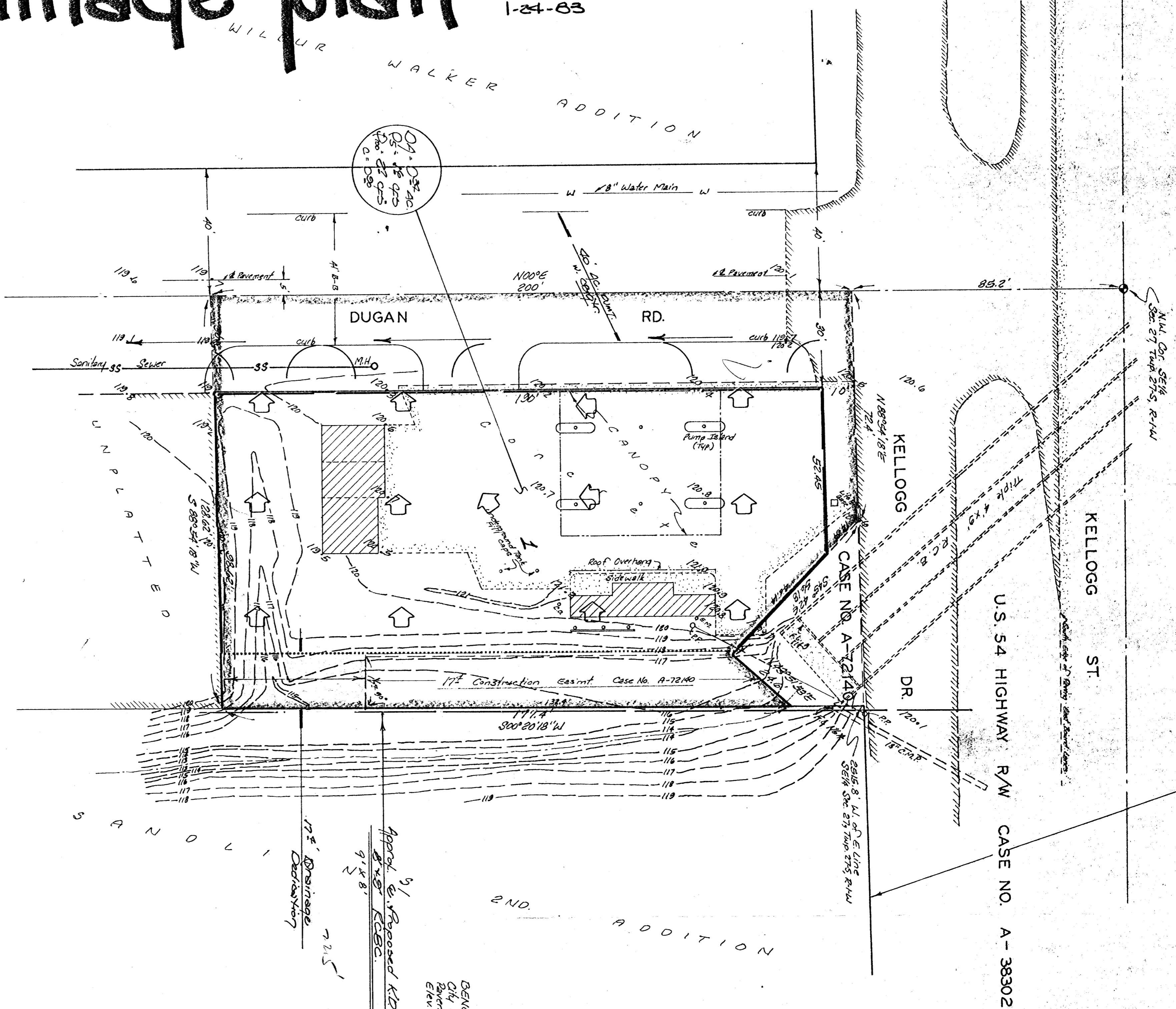


Drainage plan

1-24-83

WILBUR WALKER ADDITION

11/17/83
11/14/83
11/4/83
13/07/83



SKETCH PLAT UNA JOHNSON ADDITION

The north 200 feet of that part of the SE 1/4 of Sec. 27, Twp. 29S, R. 1-W of the 6th PM, Sedgwick County, Kansas, lying north of the Wichita and Eastern Railroad and south of U.S. Highway 54 (Case No. A-38302), except the east 2515.8 feet thereof and except that part condemned to Highway in Case No. A-72140.

UNA C. JOHNSON

BENCH MARK:
City Standard Disc. E. of U.S. 54
2400 ft. West of E. Dugan St.
Elev. = 121.652 City Datum

