

# HUNTINGTON PLACE 6TH ADDITION WICHITA, SEDGWICK COUNTY, KANSAS

*Note:*  
Community Unit Plan  
DP-152 on file with  
Metropolitan Area Dept.

State of Kansas } ss  
City of Wichita }

This plat of "HUNTINGTON PLACE 6TH ADDITION",  
Wichita, Sedgwick County, Kansas, has been submitted to and approved  
by the Wichita-Sedgwick County Metropolitan Area Planning Commission,  
Wichita, Kansas.  
Dated this 17th day of MAY, 1998.  
Wichita-Sedgwick County Metropolitan Area Planning Commission.

*Richard Lopez*, Chair  
Richard Lopez

\_\_\_\_\_, Secretary  
Marvin S. Krout

State of Kansas } ss  
City of Wichita }

This plat approved and all dedications  
shown hereon accepted by the City Council of the City of Wichita,  
Kansas, this \_\_\_\_ day of \_\_\_\_\_, 1998.

\_\_\_\_\_, Mayor  
Bob Knight

\_\_\_\_\_, City Clerk  
Pat Burnett

Entered on transfer record this \_\_\_\_ day  
of \_\_\_\_\_, 1998.

\_\_\_\_\_, County Clerk  
James Alford

State of Kansas } ss  
Sedgwick County }

This is to certify that this plat has been  
filed for record in the office of the Register of Deeds, this \_\_\_\_ day  
of \_\_\_\_\_, 1998, at \_\_\_\_ o'clock \_\_\_\_; and is duly  
recorded.

\_\_\_\_\_,  
Bill Meek

\_\_\_\_\_, Deputy  
Linda Kizzire

State of Kansas } ss  
Sedgwick County } I, Lowell D. High, licensed land surveyor in aforesaid  
county and state, do hereby certify that I have surveyed and platted "HUNTINGTON PLACE  
6TH ADDITION", Wichita, Sedgwick County, Kansas and that the accompanying plat is a  
replat of and a true and correct exhibit of the property surveyed, described as follows:

Lot 8, Block 4, Huntington Place Addition to Wichita, Sedgwick County, Kansas

Existing public dedications and easements, being vacated by virtue of K.S.A. 12-512(b).

*Lowell D. High*, Surveyor  
Lowell D. High, L. S. #685



**CURVE DATA:**  
R = 175.00'  
Delta = 53°31'03"  
L = 163.46'  
Chd = 157.58'  
Chd Brg. = S8°59'24"E

Know all men by these presents that I, the undersigned owner have  
caused the land described in the Surveyors certificate to be platted into  
lots and a reserve to be known as "HUNTINGTON PLACE 6TH ADDITION", Wichita,  
Sedgwick County, Kansas. The utility easements are hereby granted as indicated  
for the construction and maintenance of all public utilities. The drainage easement  
is hereby granted to the public for construction and maintenance of a public storm sewer.  
The sidewalk easement is platted for construction of sidewalk to be maintained  
by the Homeowners Association. The reserve is for use of the Homeowner's  
Association in accordance with the Community Unit Plan.

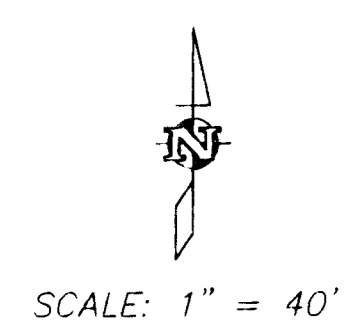
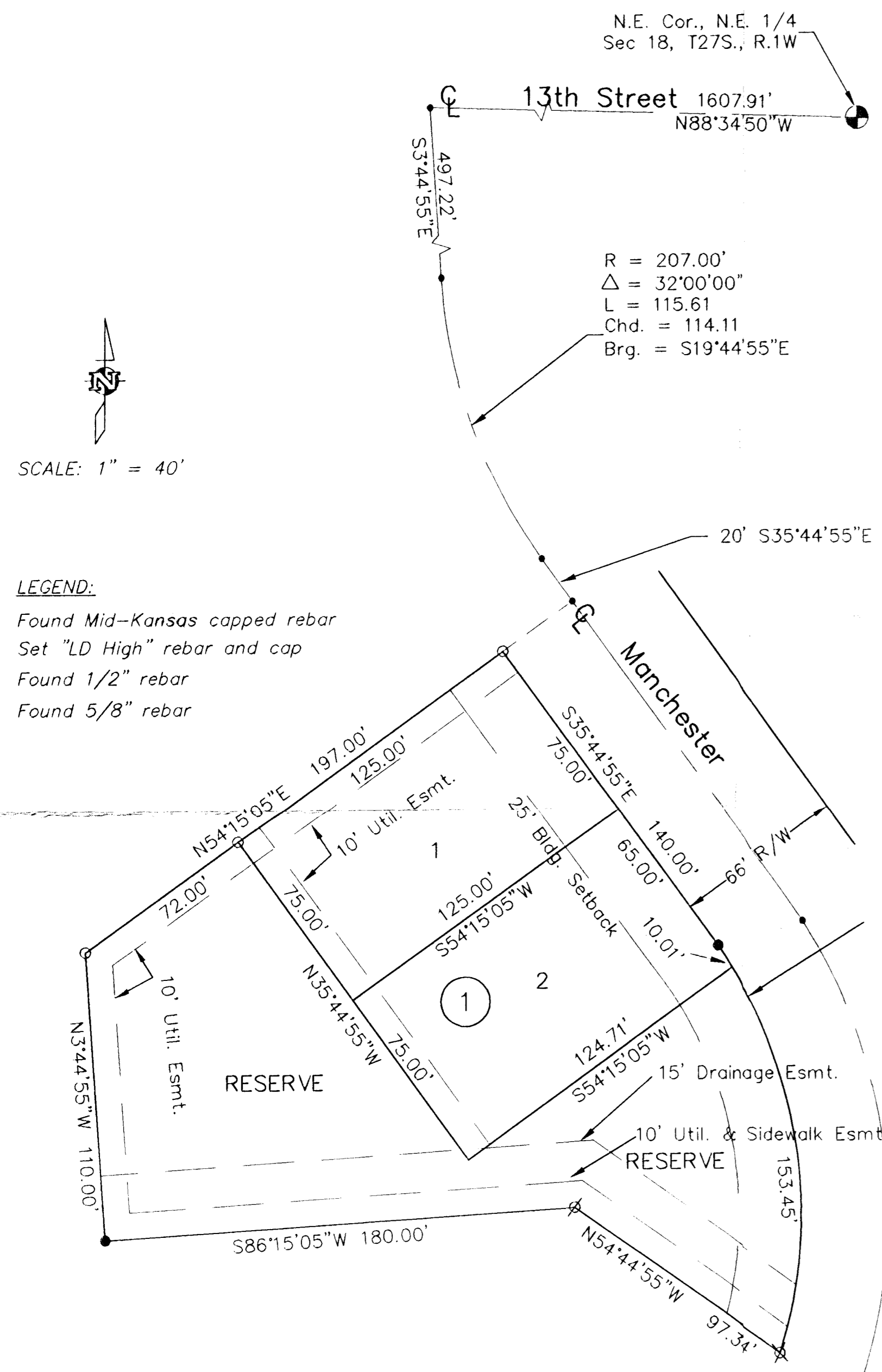
*Tom Borrego*, Owner  
Tom Borrego, President  
Huntington Place Owner's Association

State of Kansas } ss  
Sedgwick County } The foregoing instrument was acknowledged  
before me, this 21st day of Sept, 1998, by Tom Borrego, President,  
Huntington Place Owner's Association personally known to be the same person  
who executed the foregoing instrument of writing and duly acknowledged the  
execution of same on behalf of the association.

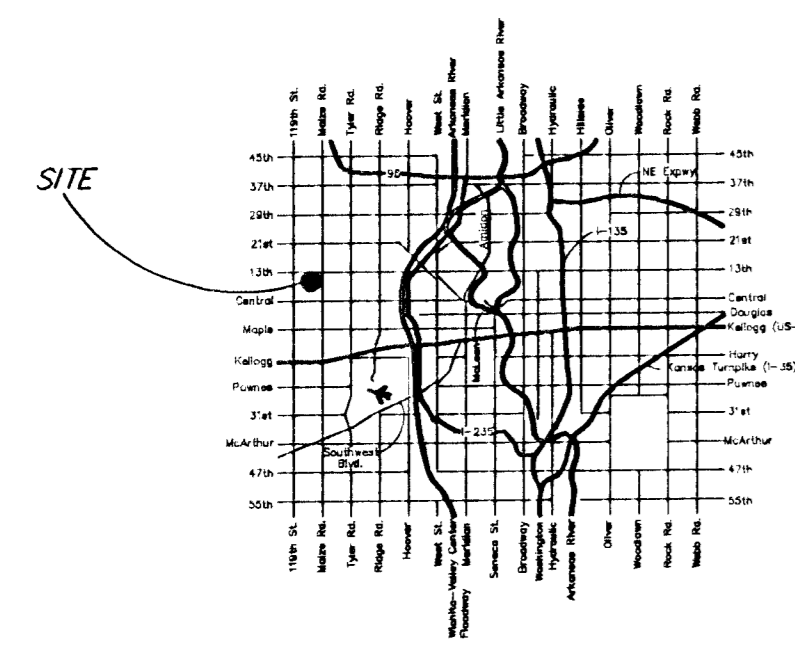
DOUGLAS KLASSEN  
NOTARY PUBLIC  
STATE OF KANSAS  
My App't. Exp. 4-02-01

*Douglas Klassen*, Notary Public

My App't. Exp. 4-02-01



- LEGEND:**
- Found Mid-Kansas capped rebar
  - Set "LD High" rebar and cap
  - ∅ Found 1/2" rebar
  - ⊗ Found 5/8" rebar



**LOCATION MAP**

**AUSTIN MILLER P.A.**  
ENGINEERING SERVICES  
254 S. Louisa, Suite 210 Wichita, KS 67211  
316/252-1281 fax 316/252-5773