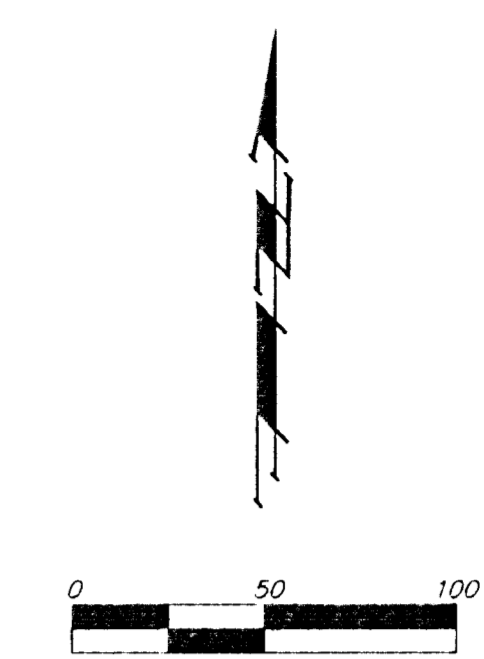
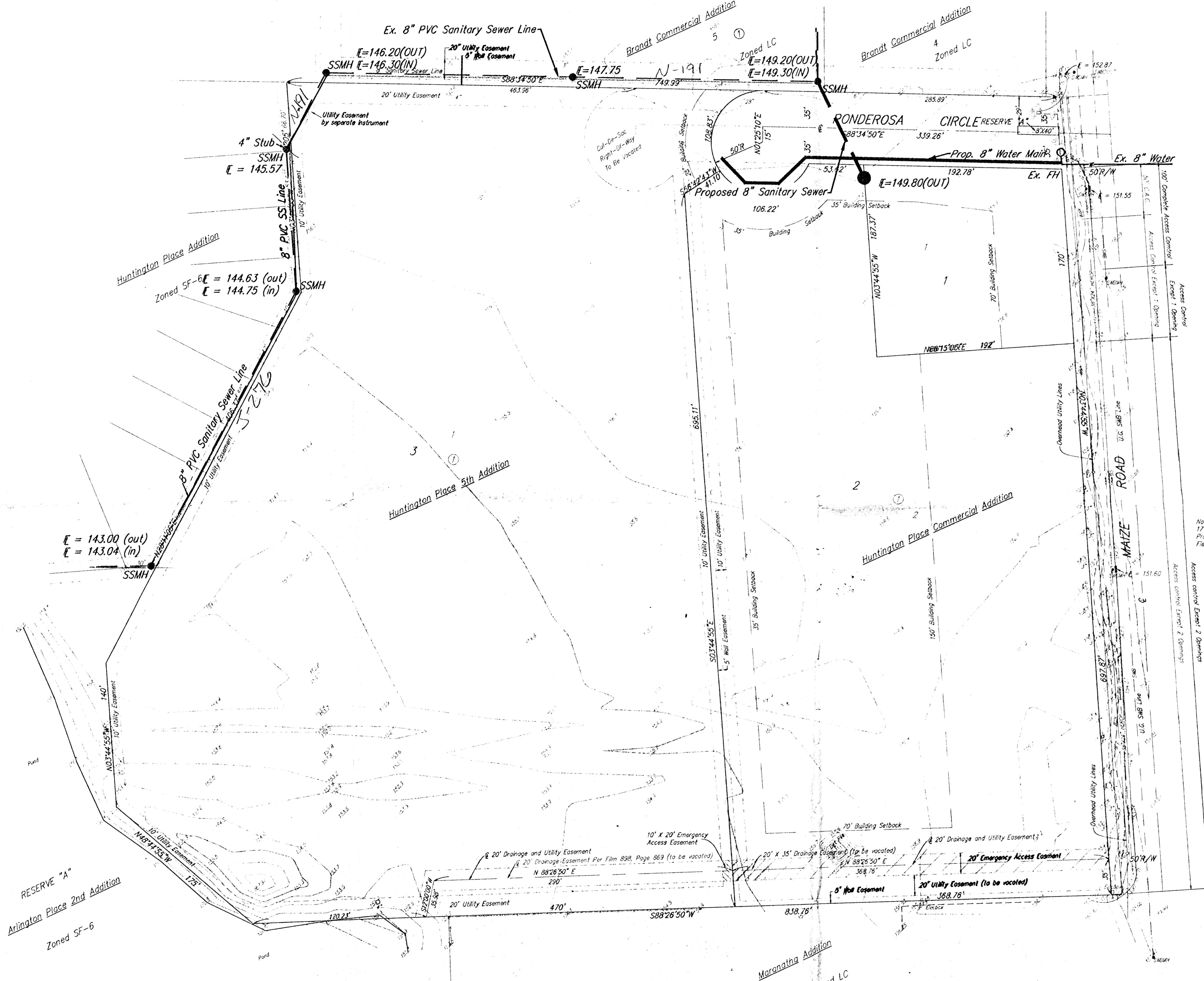


# UTILITY PLAN

## HUNTINGTON PARK ADDITION

### WICHITA, SEDGWICK COUNTY, KANSAS



SSMH = Sanitary Sewer Man Hole  
 SWSMH = Storm Sewer Man Hole  
 LP = Light Pole  
 Elecbox = Electric Box  
 SWBMH = SWB Man Hole  
 SWBDUCT = SWB duct

Minimum Pad Elevation for  
 Huntington 5th Addition  
 Lot 1, Block 1  
 Min. Pad = 154.0 (City Datum)  
 (1341.4 U.S.G.S.)

Note:  
 Utilities per city records  
 (Not Field Verified)

**LEGAL DESCRIPTION**

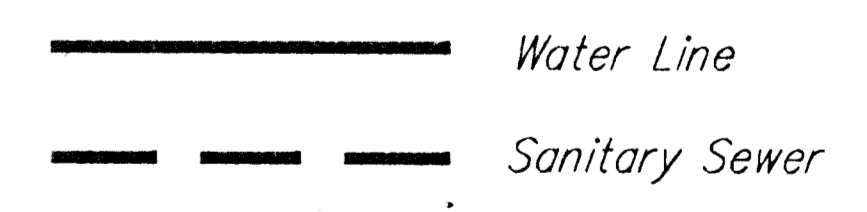
A replat of Lots 1 and 2 Huntington Place Commercial, An Addition to Wichita, Sedgwick County, Kansas, together with Lot 1, Huntington Place 5th Addition, Wichita, Sedgwick County, Kansas.

**BENCHMARK**

City of Wichita benchmark. NW Corner intersection to Maize Road and 13th Street North, 109.5' north and 71' West of center line both. 2' east of east face walk.

**OWNER**

Maize Road Partnership  
 Attn: Micheal G. Loveland  
 150 N. Market  
 Wichita, Ks 67202  
 (316)-262-6400



October 22, 1996

**BAUGHMAN COMPANY P. A.**  
 ENGINEERING, SURVEYING, & PLANNING  
 (316)-282-7271 • 315 ELLIS • WICHITA, KANSAS 67211