

N.W. Cor. Sec. 7, T27S, R2E, 6th P.M.

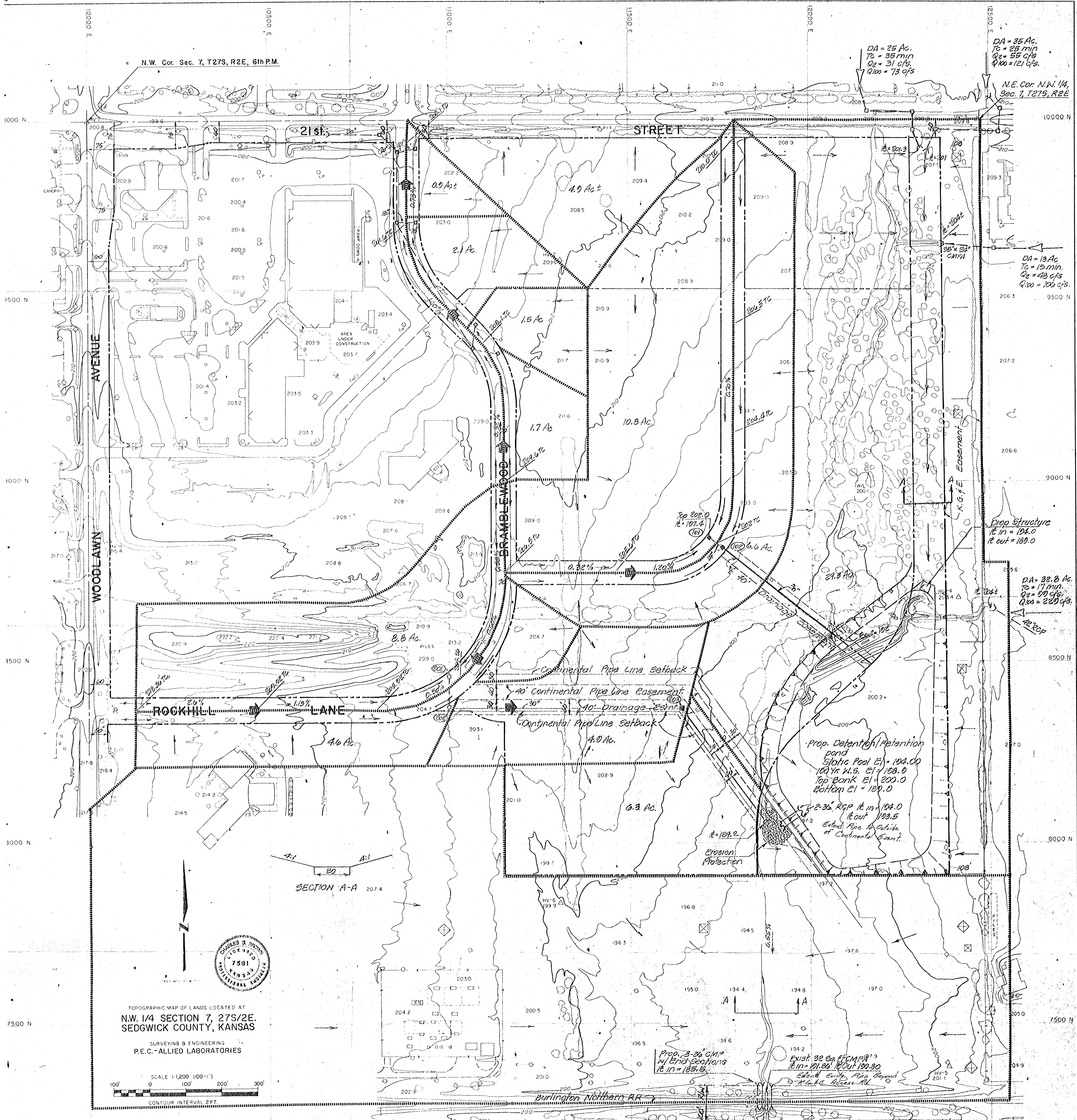
N.E. Cor. N.W. 1/4, Sec. 7, T27S, R2E

DA = 25 Ac.
Tc = 35 min
Q₂ = 31 cfs
Q₁₀₀ = 73 cfs

DA = 13 Ac.
Tc = 15 min.
Q₂ = 48 cfs
Q₁₀₀ = 106 cfs

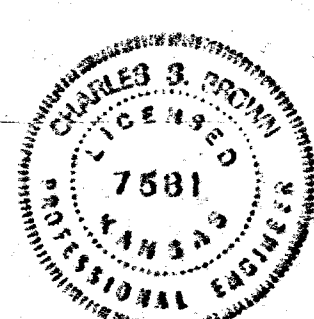
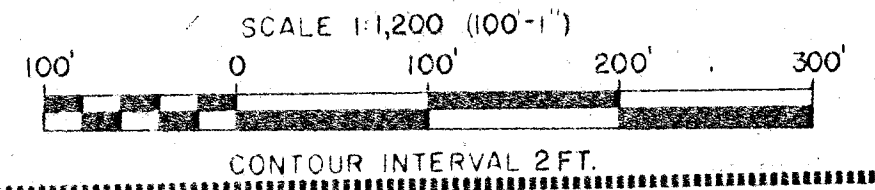
Drop Structure
Tc in = 184.0
Tc out = 189.0

DA = 32.8 Ac.
Tc = 17 min.
Q₂ = 99 cfs
Q₁₀₀ = 229 cfs



TOPOGRAPHIC MAP OF LANDS LOCATED AT
N.W. 1/4 SECTION 7, 27S/2E,
SEDGWICK COUNTY, KANSAS

SURVEYING & ENGINEERING
P.E.C.-ALLIED LABORATORIES



PHOTOGRAMMETRY BY
MILES A.H. PHOTO SURVEY
124-DAT, KANSAS 66549
19-11487-3550 FILE M183 P 62

AERIAL PHOTOGRAPHY
*** VERTICAL AT 40% P.D.
ALTITUDE: 3200 FEET A.M.S.L.
DATE/S OBTAINED: 21 DEC 1982

LEGEND

Notes:

1875' to Sec. Line

DRAINAGE PLAN

5-200