

**DRAINAGE PLAN OF  
NORTHBOROUGH 2nd Add.  
Wichita, Sedgwick County, Kansas.**

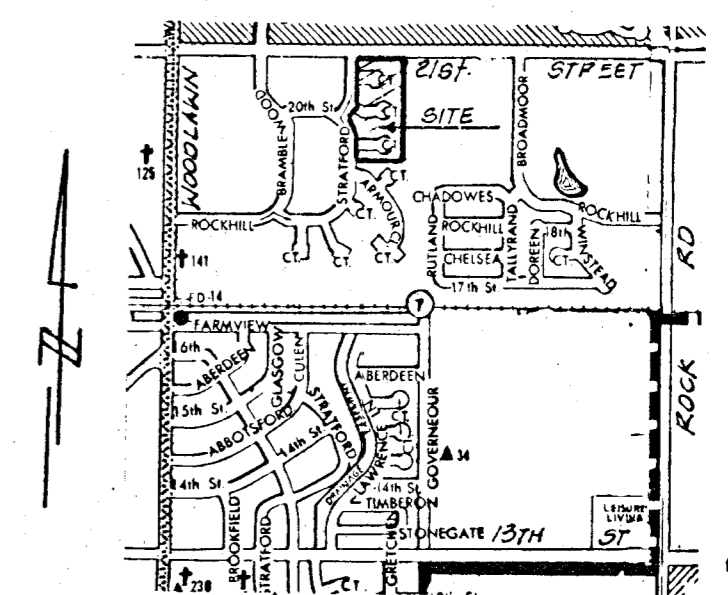
**OWNER:** F. I. Leben, etal  
105 S. Broadway, Suite 640, 67202

**DEVELOPER:** Manor Care of Kansas  
c/o Bud Brown  
1940 Old Tustin Ave. Santa Ana, Ca.

**ENGINEER:** P. E. C. p.a  
1440 English, 67211

1" = 100'  
B.M. Disc 45.4' east &  
45.5' north of & inter-  
section of Woodlawn &  
21st St. north  
Elev. = 200.65 City Datum.  
Revised Topo of 10-28-85  
Note:  
for Setback Lines See  
C.U.P. D.P.-67

*Note: Lots shall be graded to  
drain to streets, ditches, channels  
or existing storm sewers, via drives,  
flumes, private storm sewers and/or  
others approved drainage utilities.*



**AREA MAP**  
Date: March 13, 1980

*Drainage Plan*