

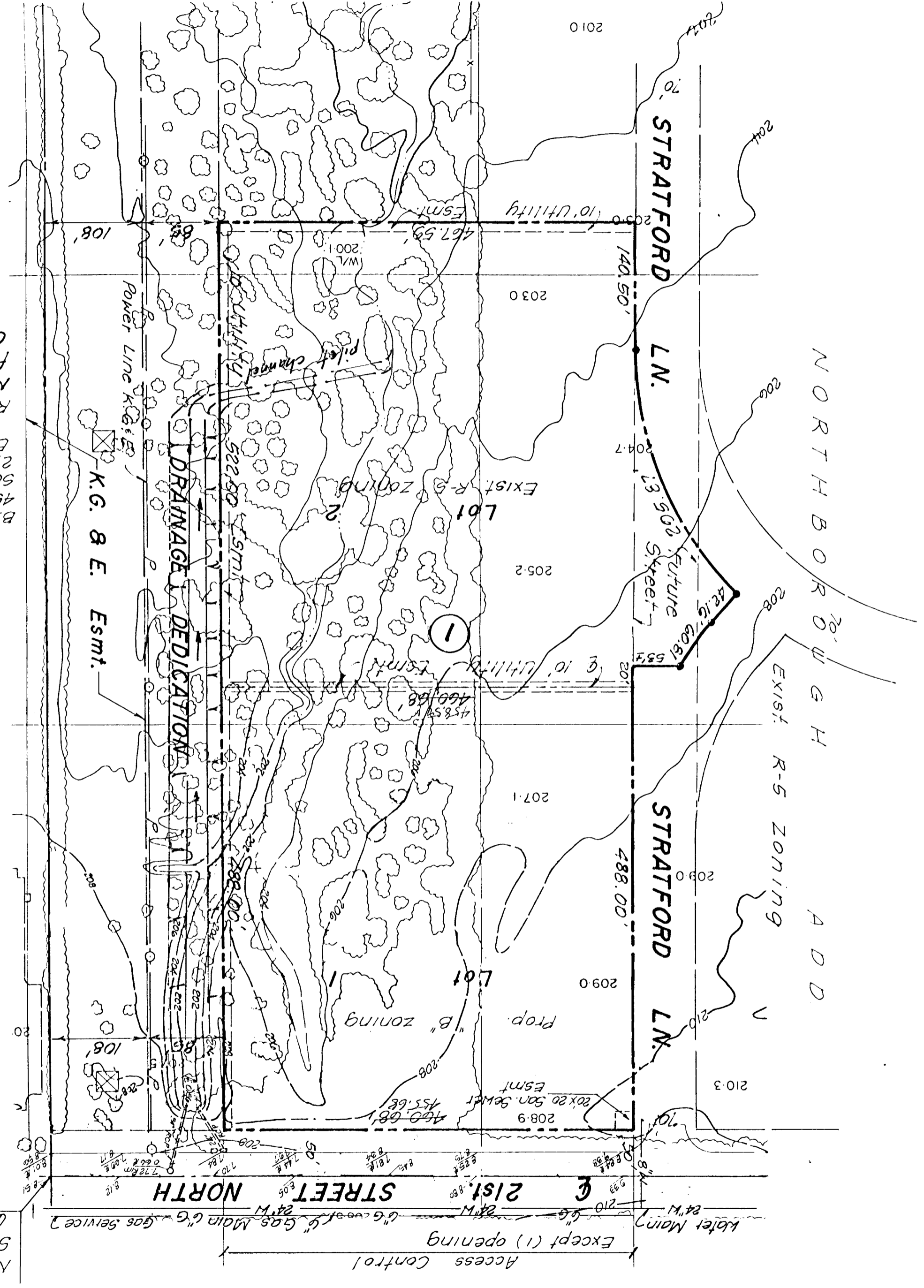
**PRELIMINARY PLAT OF
NORTHBOROUGH 2nd Add.
Wichita, Sedgwick County, Kansas.**

OWNER: T. I. Leben, etal
105 S. Broadway, Suite 640, 67202

DEVELOPER: Manor Care of Kansas
c/o Bud Brown
1940 Old Tustin Ave. Santa Ana, Ca.

ENGINEER: P. E. C. pa
1440 English, 67211

N.E. Cor. N.W. Cor.
Sec. 7, T27S, R2E
6th P.M.



1" = 100'
B.M. disc 45.4 east &
45.5' north of & inter-
section of Woodlawn &
21st St. north
Elev. = 200.65 City Datum.
Revised Topo of 10-28-85
Note:
for setback lines See
C.U.P. D.P.-G1

AREA MAP
Date: March 13, 1986

