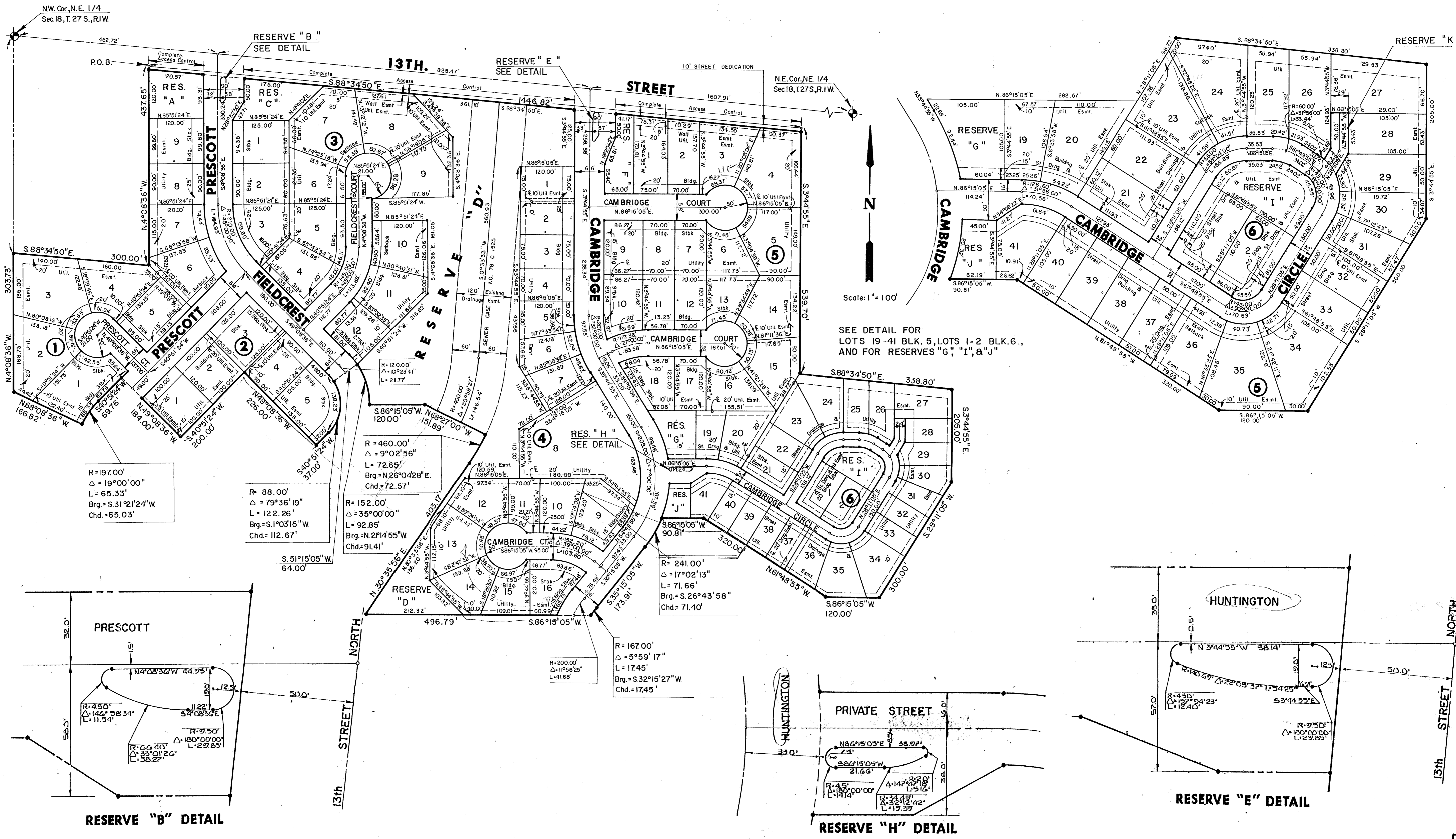


FINAL PLAT OF HUNTINGTON PLACE

AN ADDITION TO WICHITA, SEDGWICK COUNTY, KANSAS



R = 197.00'
 $\Delta = 19^{\circ}00'00''$
 L = 65.33'
 Brg. = S.31°21'24"W
 Chd. = 65.03'

R = 88.00'
 $\Delta = 79^{\circ}36'19''$
 L = 12.26'
 Brg. = S.1°03'15"W
 Chd. = 112.67'

R = 460.00'
 $\Delta = 9^{\circ}02'56''$
 L = 72.65'
 Brg. = N.26°04'28"E
 Chd. = 72.57'

R = 152.00'
 $\Delta = 35^{\circ}00'00''$
 L = 92.85'
 Brg. = N.2°14'55"W
 Chd. = 91.41'

R = 167.00'
 $\Delta = 5^{\circ}59'17''$
 L = 17.45'
 Brg. = S.32°15'27"W
 Chd. = 17.45'

SEE DETAIL FOR
 LOTS 19-41 BLK. 5, LOTS 1-2 BLK. 6,
 AND FOR RESERVES "G", "I", & "J"

