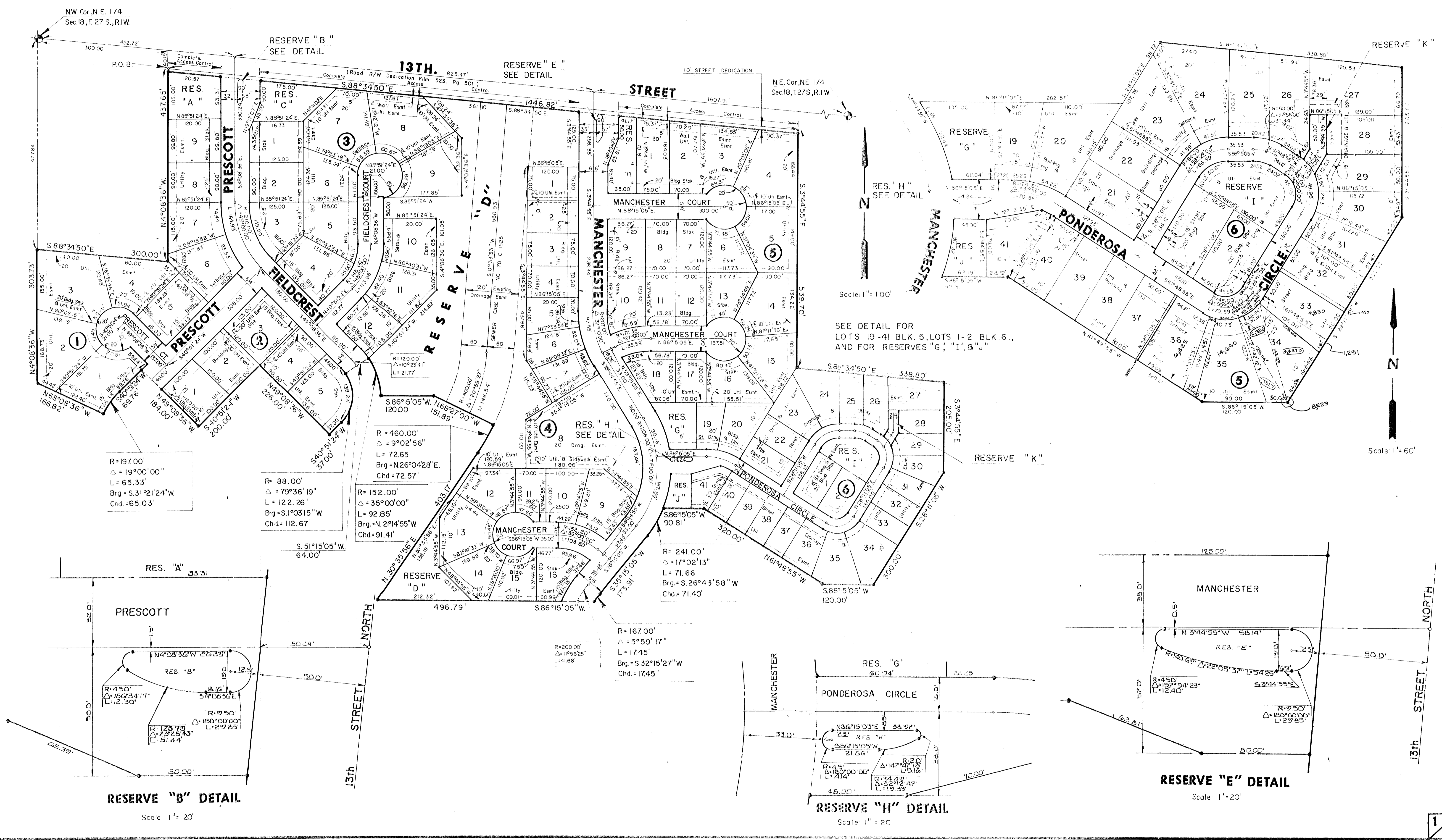


# FINAL PLAT OF HUNTINGTON PLACE

AN ADDITION TO WICHITA, SEDGWICK COUNTY, KANSAS



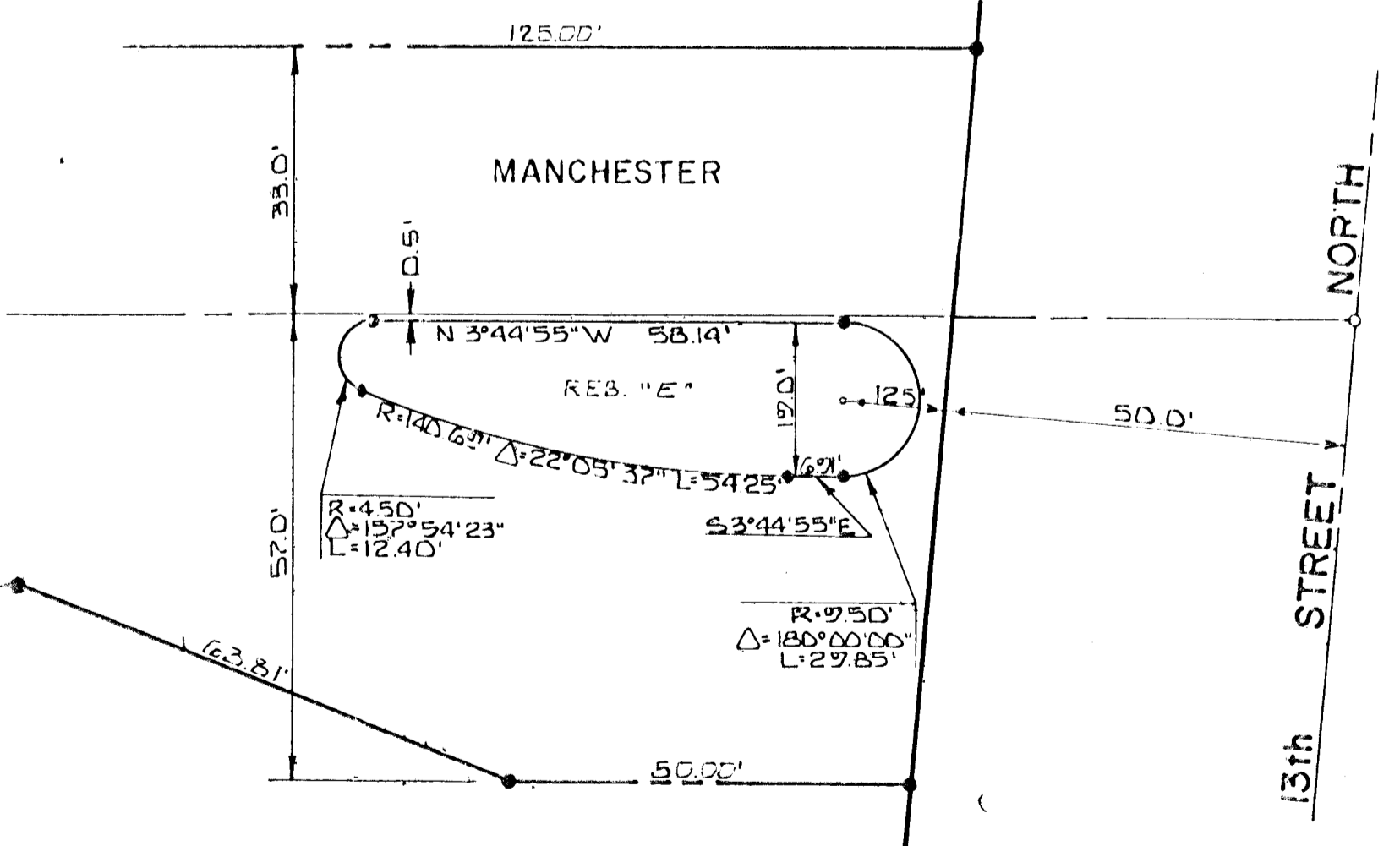
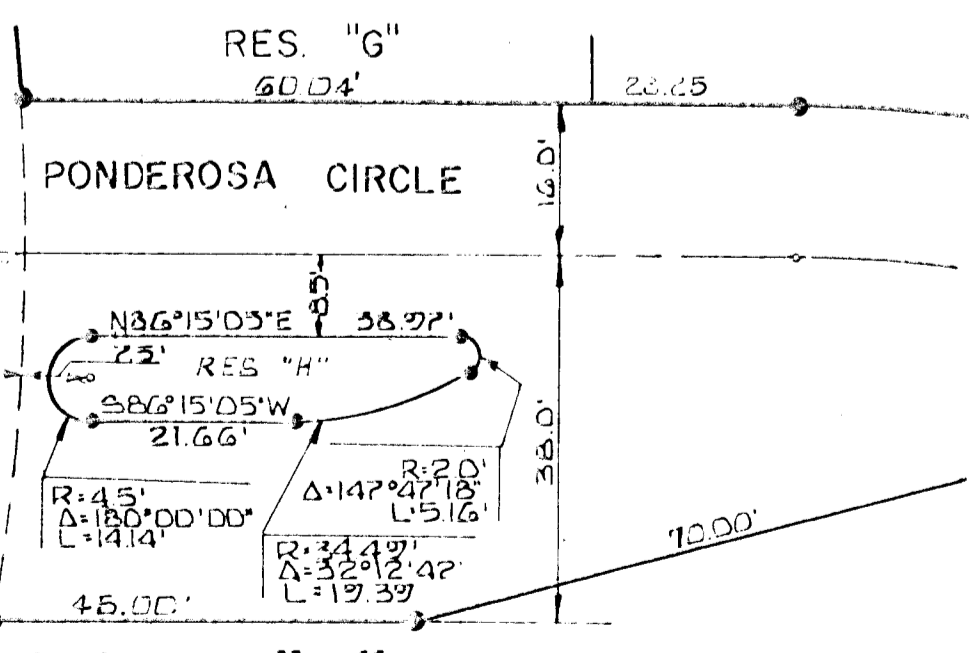
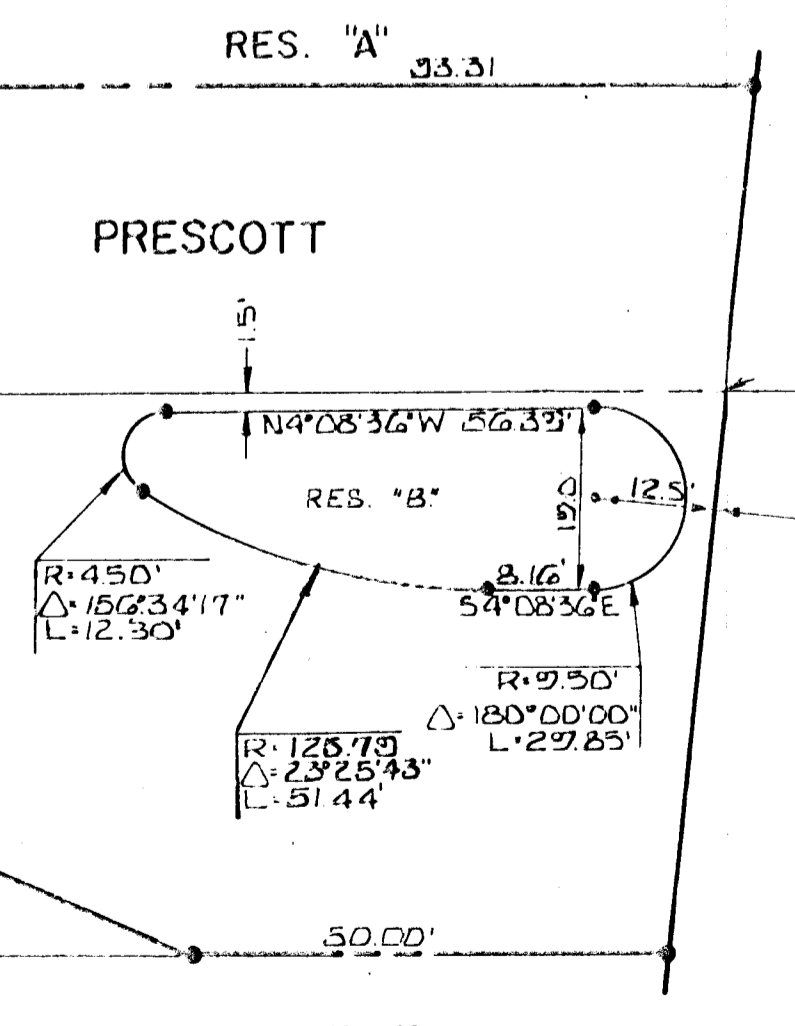
R = 197.00'  
 $\Delta = 19^{\circ}00'00''$   
 L = 65.33'  
 Brg = S.31^{\circ}24'W  
 Chd = 65.03'

R = 88.00'  
 $\Delta = 79^{\circ}36'19''$   
 L = 122.26'  
 Brg = S.1^{\circ}03'15"W  
 Chd = 112.67'

R = 152.00'  
 $\Delta = 35^{\circ}00'00''$   
 L = 92.85'  
 Brg = N.2^{\circ}14'55"W  
 Chd = 91.41'

R = 167.00'  
 $\Delta = 5^{\circ}59'17''$   
 L = 17.45'  
 Brg = S.32^{\circ}15'27"W  
 Chd = 17.45'

R = 241.00'  
 $\Delta = 17^{\circ}02'13''$   
 L = 71.66'  
 Brg = S.26^{\circ}43'58"W  
 Chd = 71.40'



SEE DETAIL FOR  
 LOTS 19-41 BLK. 5, LOTS 1-2 BLK. 6,  
 AND FOR RESERVES "G", "I", & "J"