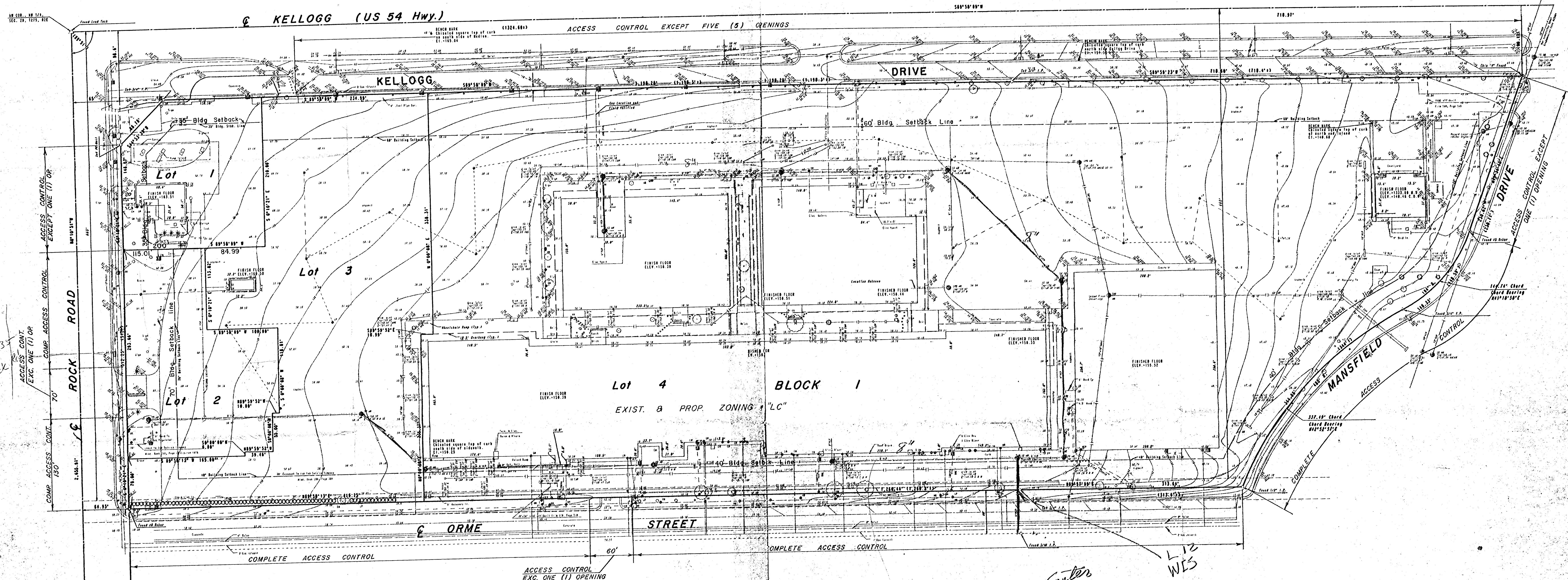


4100
525
525



D35
Rock
ACCESS CONT.
EXC. ONE (1) OR
COMP. ACCESS CONTROL

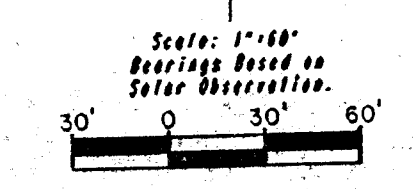
ACCESS CONTROL EXCEPT ONE (1) OPENING

PRELIMINARY PLAT OF
SHARON RYAN ADDITION

OWNER: General Real Estate Shares
c/o Sharon Ryan
8113 E. Kellogg Wichita, Ks. 67207

SUBDIVIDER: Reliance Woodmont
c/o Reed Oatman
6500 West Freeway, Suite 900
Fort Worth, Texas. 76116

ENGINEER: Professional Engineering Consultants p.a.
1440 English Wichita, Ks. 67211



- LEGEND**
- Sewer Manhole
 - Curb Inlet
 - △ Flood Light
 - ▲ Light Pole
 - Power Pole
 - ⊕ Electric Meter
 - ⊖ Electric Box or Risers
 - ⊗ Gas Meter
 - ⊘ Gas Valve
 - ⊙ Water Meter
 - ⊚ Water Valve
 - ⊛ Catchment Box or Risers
 - ⊜ Irrigation Control Valve
 - ⊝ Flag Pole
 - ⊞ Fire Protection Hydrant
 - ⊟ Fire Hydrant
 - ⊠ Building Setback Line
 - ⊡ Record Boundary
- Topo Aug. 1989
Date Aug. 1989

East Gate Shopping Center

L12
WES