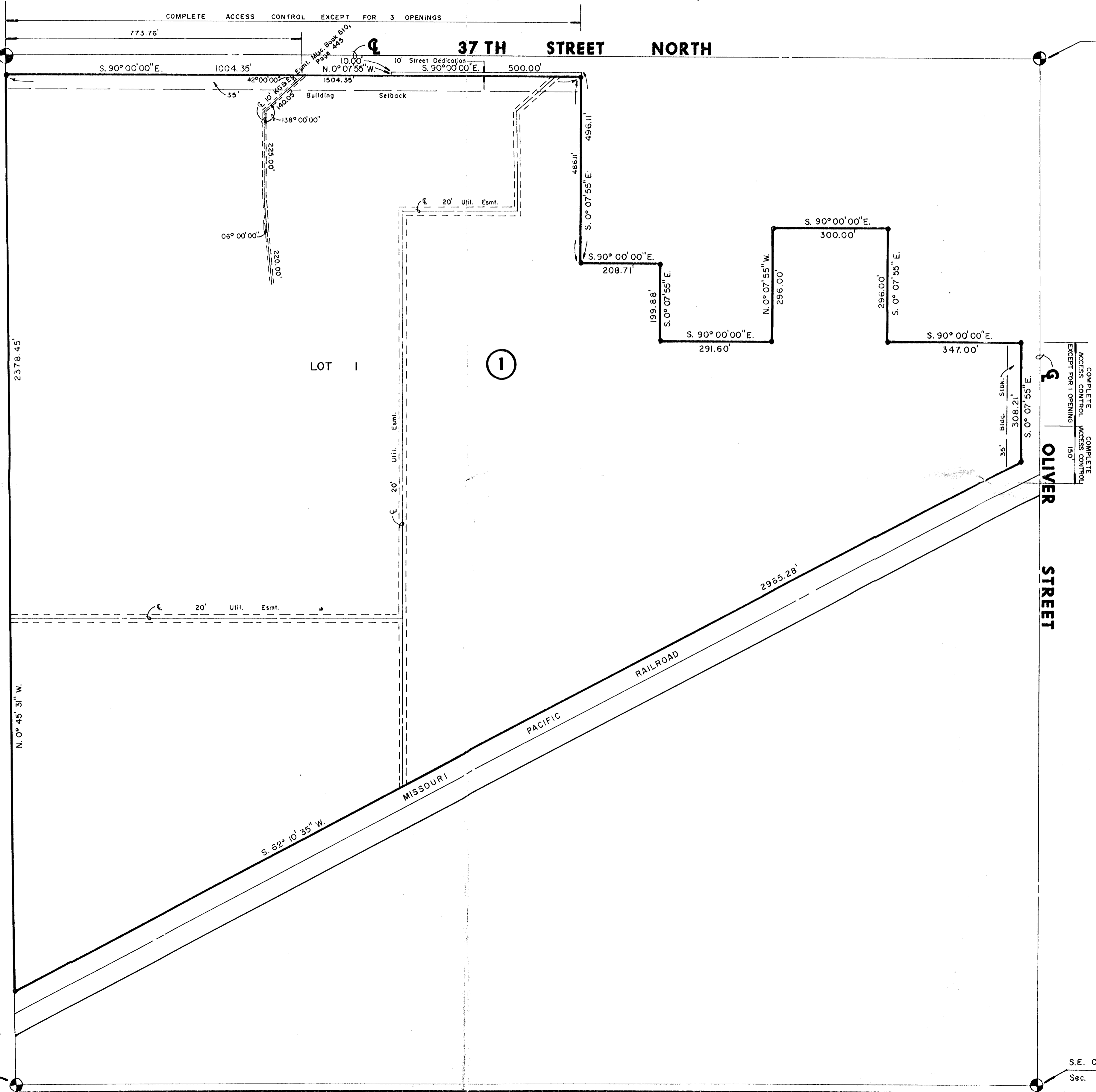
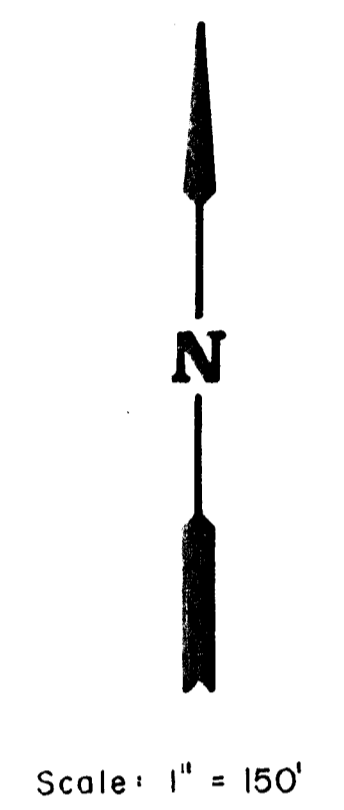


FINAL PLAT FOR KOCH OFFICE PARK SECOND ADDITION

AN ADDITION TO WICHITA, SEDGWICK COUNTY, KANSAS

N.W. Cor. of N.E. 1/4
Sec. 35 - T26S - R1E

N.E. Cor. of N.E. 1/4
Sec. 35 - T26S - R1E



S.W. Cor. of N.E. 1/4
Sec. 35 - T26S - R1E

S.E. Cor. of N.E. 1/4
Sec. 35 - T26S - R1E