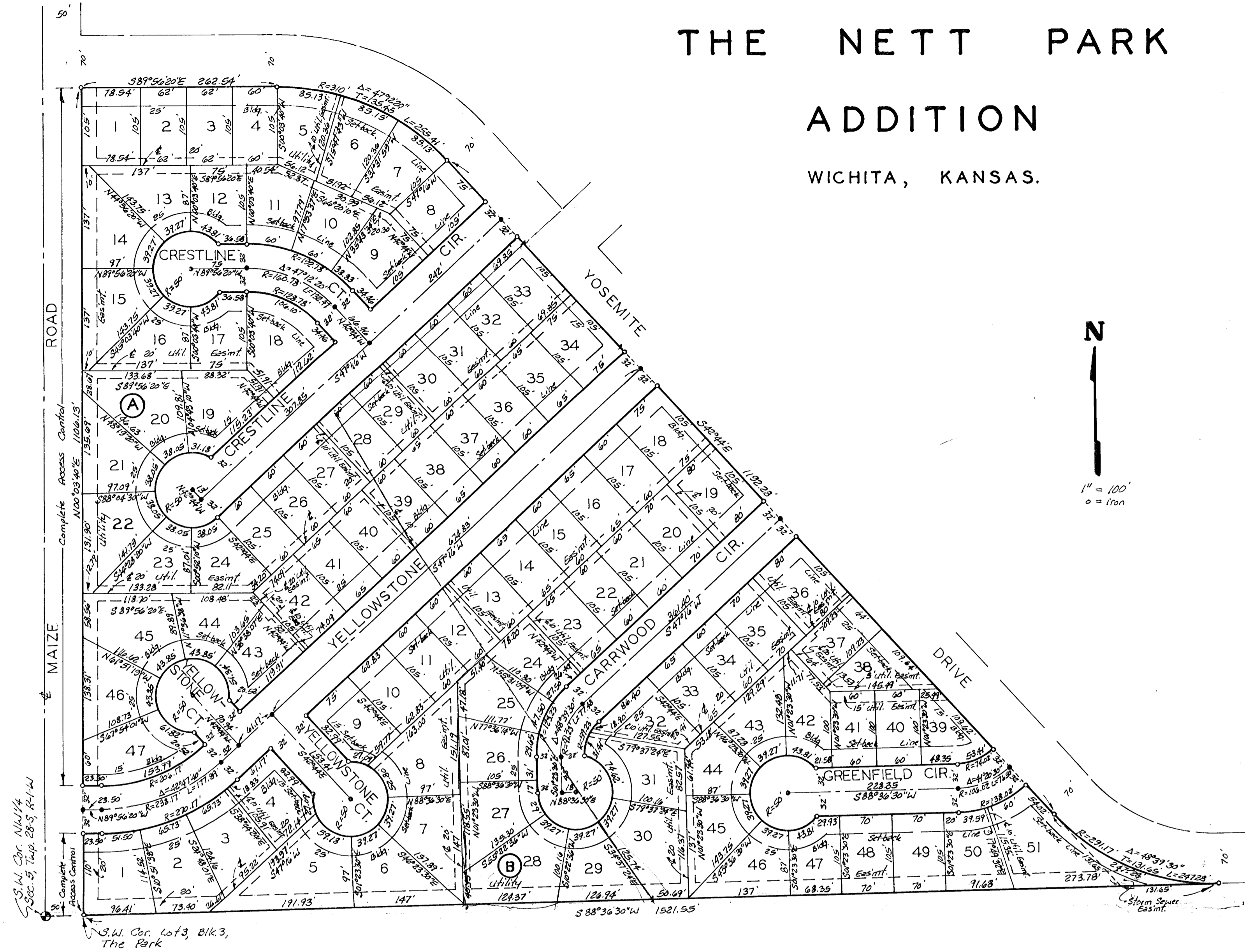


THE NETT PARK ADDITION

WICHITA, KANSAS.



This plat of "THE NETT PARK ADDITION" Wichita, Kansas, has been submitted to and approved by the Wichita-Sedgwick County Metropolitan Area Planning Commission, Wichita, Kansas. Dated this _____ day of _____ 1986.

Wichita-Sedgwick County Metropolitan Area Planning Commission.

William J. Goebel Chairman

Michael E. Lindebak Secretary

This plat approved and all dedications shown hereon accepted by the Board of Commissioners of the City of Wichita, Kansas, this _____ day of _____ 1986.

Robert C. Brown Mayor

Donald C. Giesick City Clerk

Entered on transfer record this _____ day of _____ 1986.

Don Wright County Clerk

State of Kansas } S.S. This is to certify that this plat has been filed for record in the office of the Register of Deeds, this _____ day of _____ 1986, at _____ o'clock _____ M; and is duly recorded.

Pat Kettler Register of Deeds

Ed Resa Deputy

We, the undersigned, holders of a mortgage on the above described property do hereby consent to this plat of "THE NETT PARK ADDITION", Wichita, Kansas.

Wichita State Bank

State of Kansas } S.S. We, Baughman Company, P.A., Surveyors in Sedgwick County and state do hereby certify that we have surveyed and platted "THE NETT PARK ADDITION", Wichita, Kansas and that the accompany plat is a true and correct exhibit of the property surveyed, described as and being a replat of Lots 1, 2 and 3, Block 3, The Parkan Addition to Wichita, Sedgwick County, Kansas. The utility easements, building setbacks and access control being vacated by virtue of K.S.A. 12-512(b).

All being situated in the NW 1/4 of Sec. 12, Twp. 28 S, R-1-W of the 6th. P.M., Sedgwick County, Kansas.

Baughman Company, P.A.

Date _____ Surveyor

Know all men by these presents that we, the undersigned, have caused the land described in the surveyors certificate to be platted into lots, blocks and streets to be known as "THE NETT PARK ADDITION", Wichita, Kansas. The utility easements are hereby granted as indicated for the construction and maintenance of all public utilities. The storm sewer easement is hereby granted for storm sewer purposes. The streets are hereby dedicated to and for the use of the public. All abutters rights of access to or from Maize Rd. over and across the west line of Lots 1, 14, 15, 20, 21, 22, 45, 46 and 47, Block A, and Lot 1, Block B, are hereby granted to the City of Wichita, Kansas.

Gaylan W. Nett, Sr. Linda S. Nett

Gaylan W. Nett, Jr. Melody L. Nett

State of Kansas } S.S. The foregoing instrument acknowledged before me, this _____ day of _____ 1986, by _____ of _____ of Wichita State Bank, on behalf of the corporation.

My App't. Exp. _____ Notary Public

State of Kansas } S.S. The foregoing instrument acknowledged before me, this _____ day of _____ 1986, by Gaylan W. Nett, Sr. and Linda S. Nett his wife and by Gaylan W. Nett, Jr. and Melody L. Nett, his wife.

My App't. Exp. _____ Notary Public