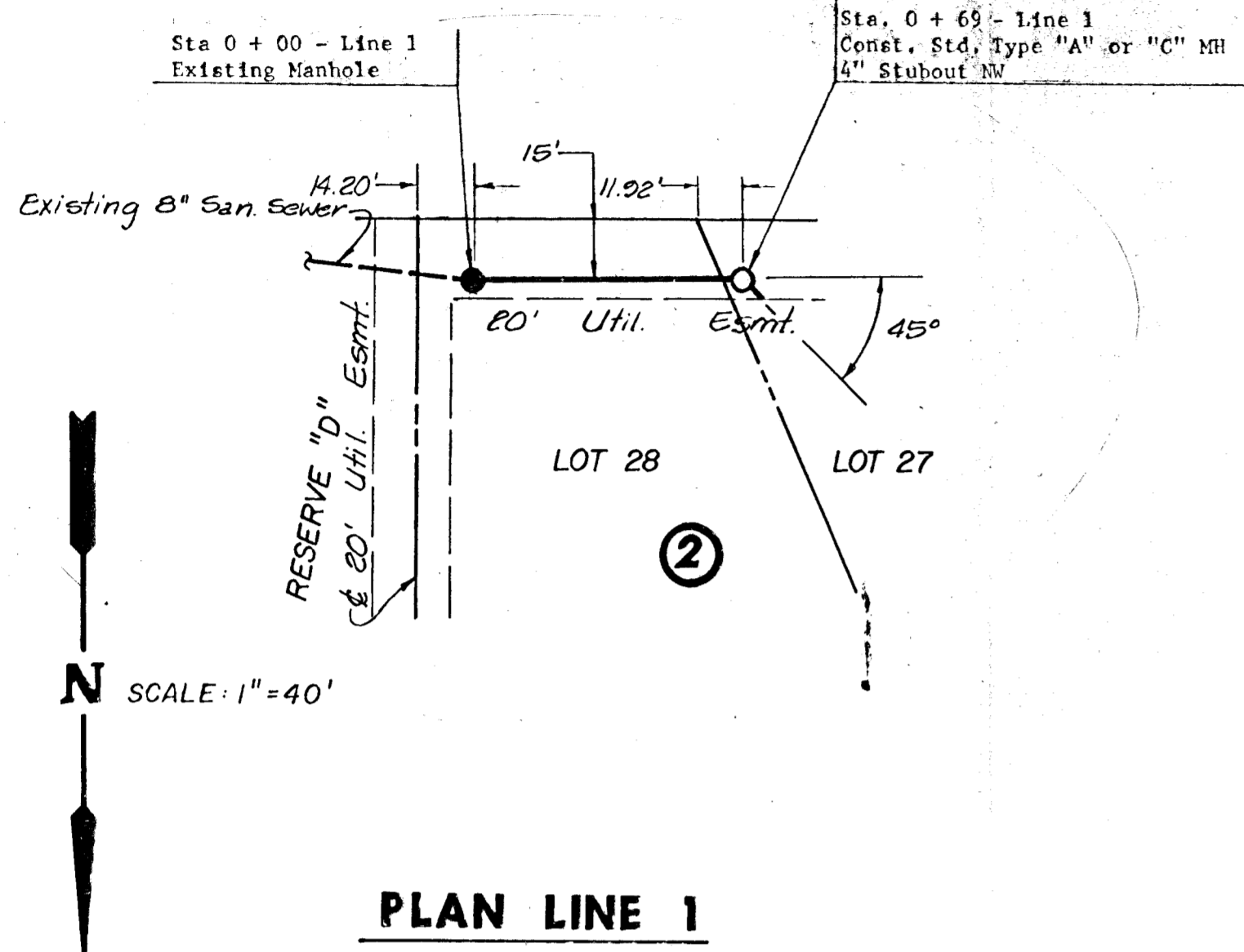
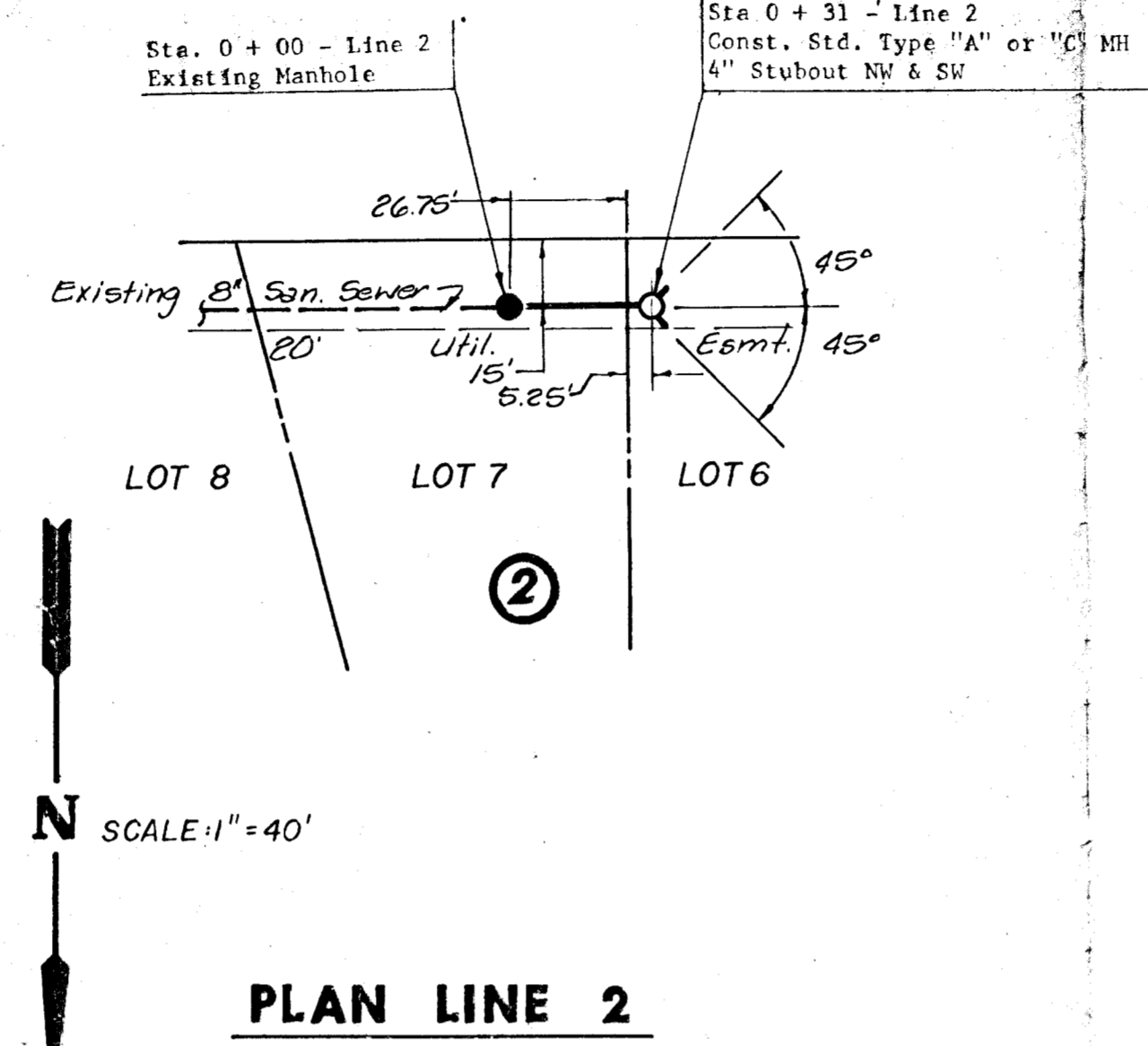


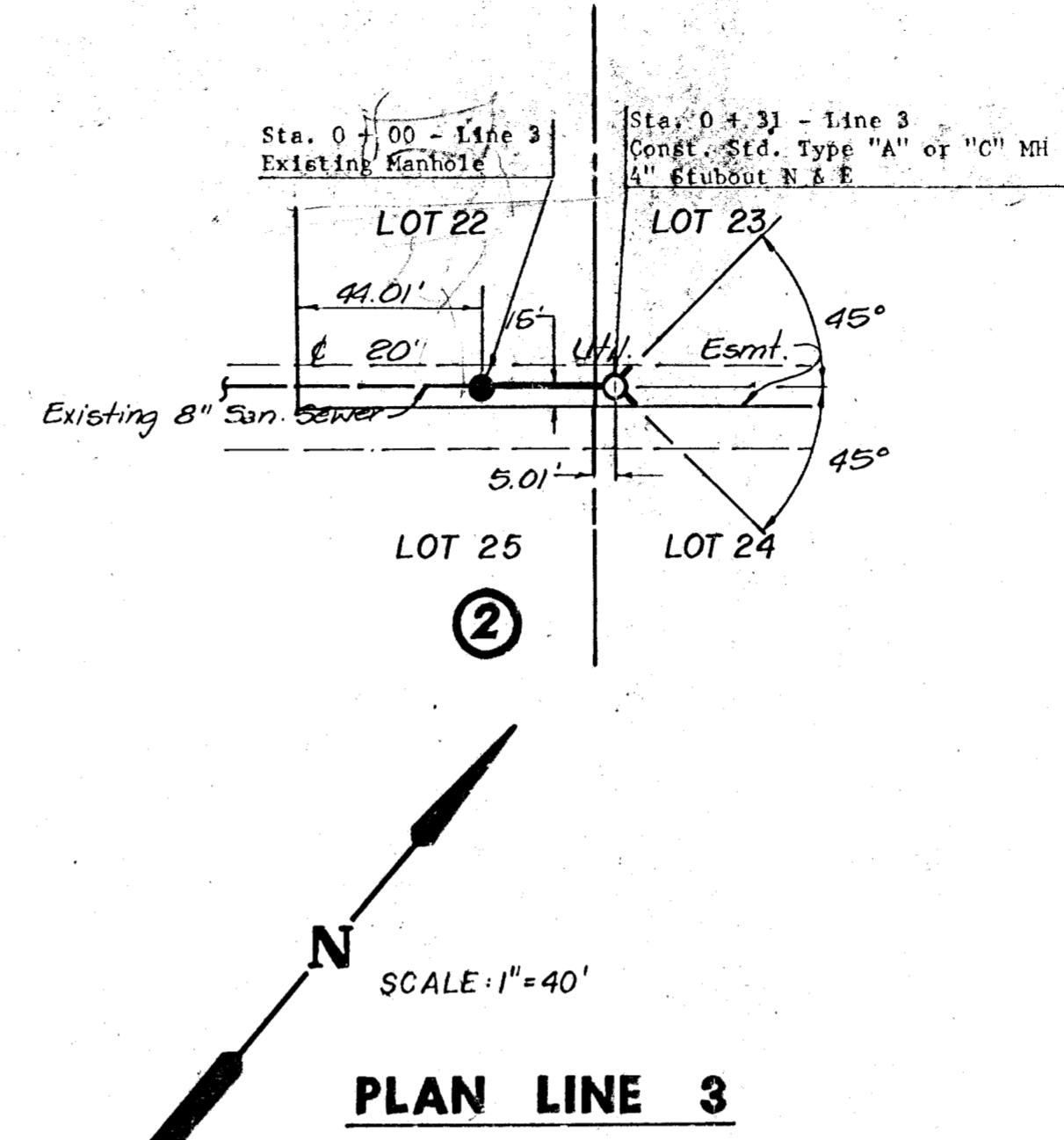
GENERAL NOTE:  
 1. Pipe: Either VCP, ABS or PVC may be used.  
 2. Manhole top elevations shall be set by the Field Engineer to match proposed finished grade as determined by the Developer.



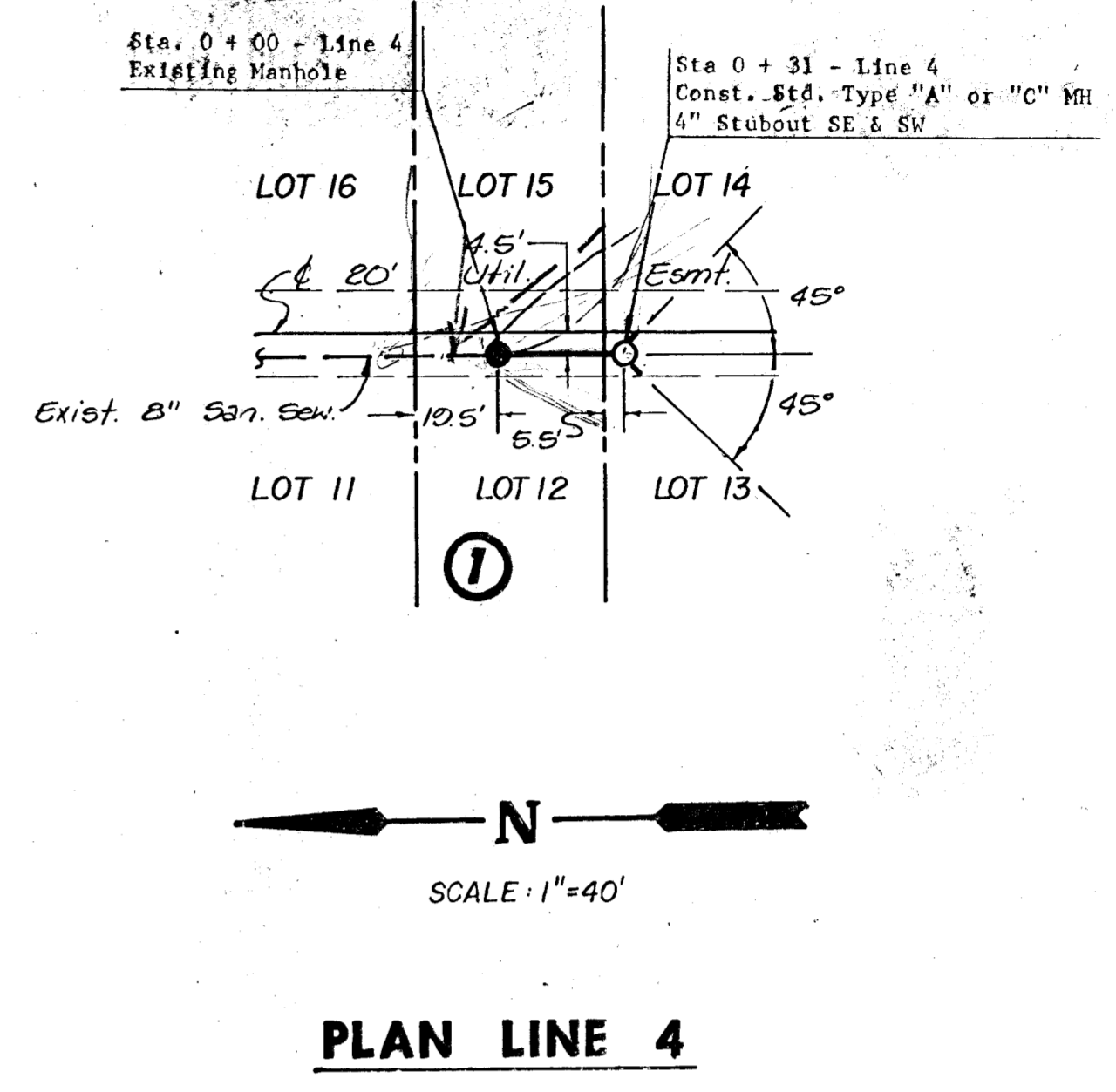
PLAN LINE 1



PLAN LINE 2



PLAN LINE 3



PLAN LINE 4

170 ft. 34.00  
 4MH 120.00  
 154.00

B.M. "□" in E. end of N headwall of RCB 49'W, 17' N of Woodlawn & 29th Street  
 ELEVATION = 175.85

