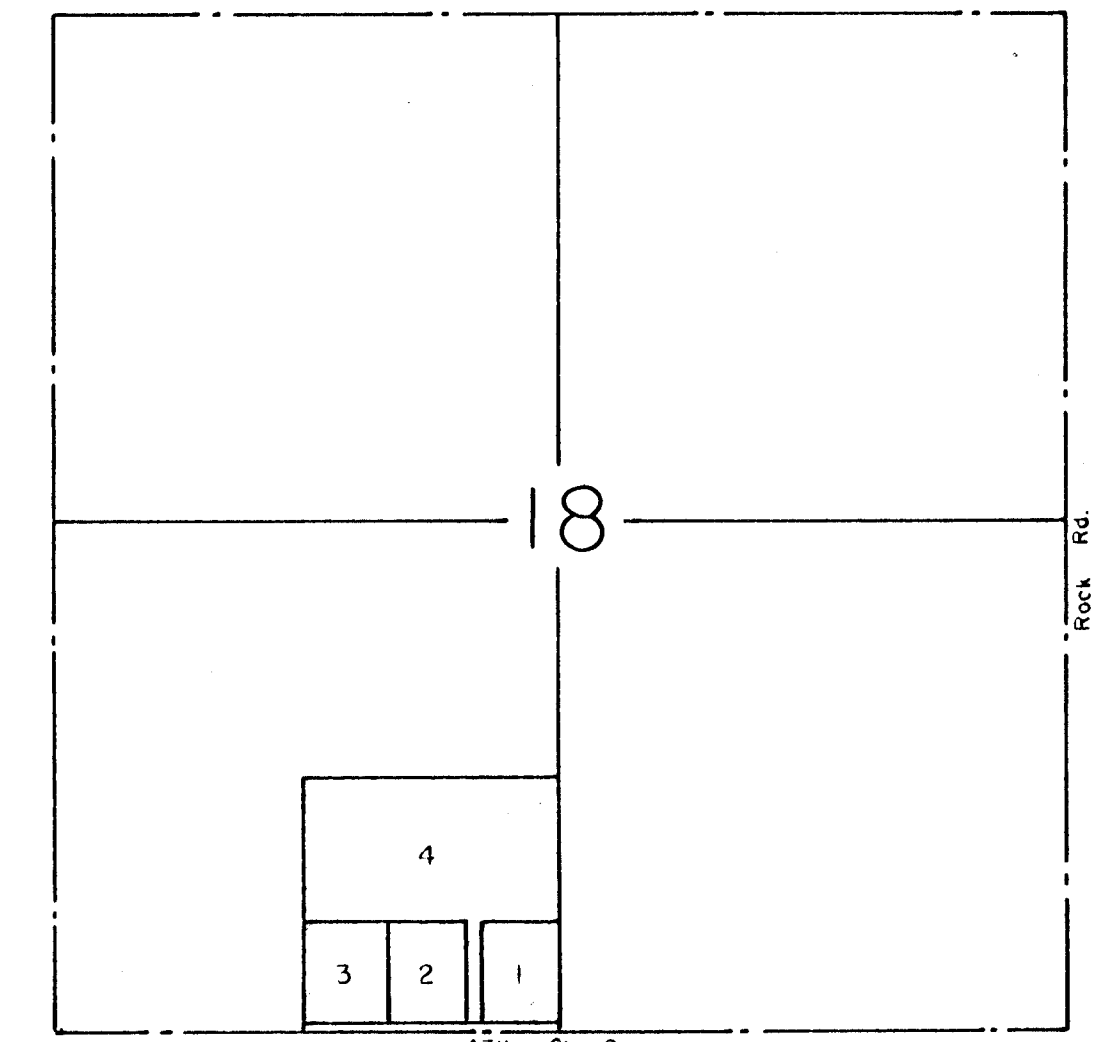
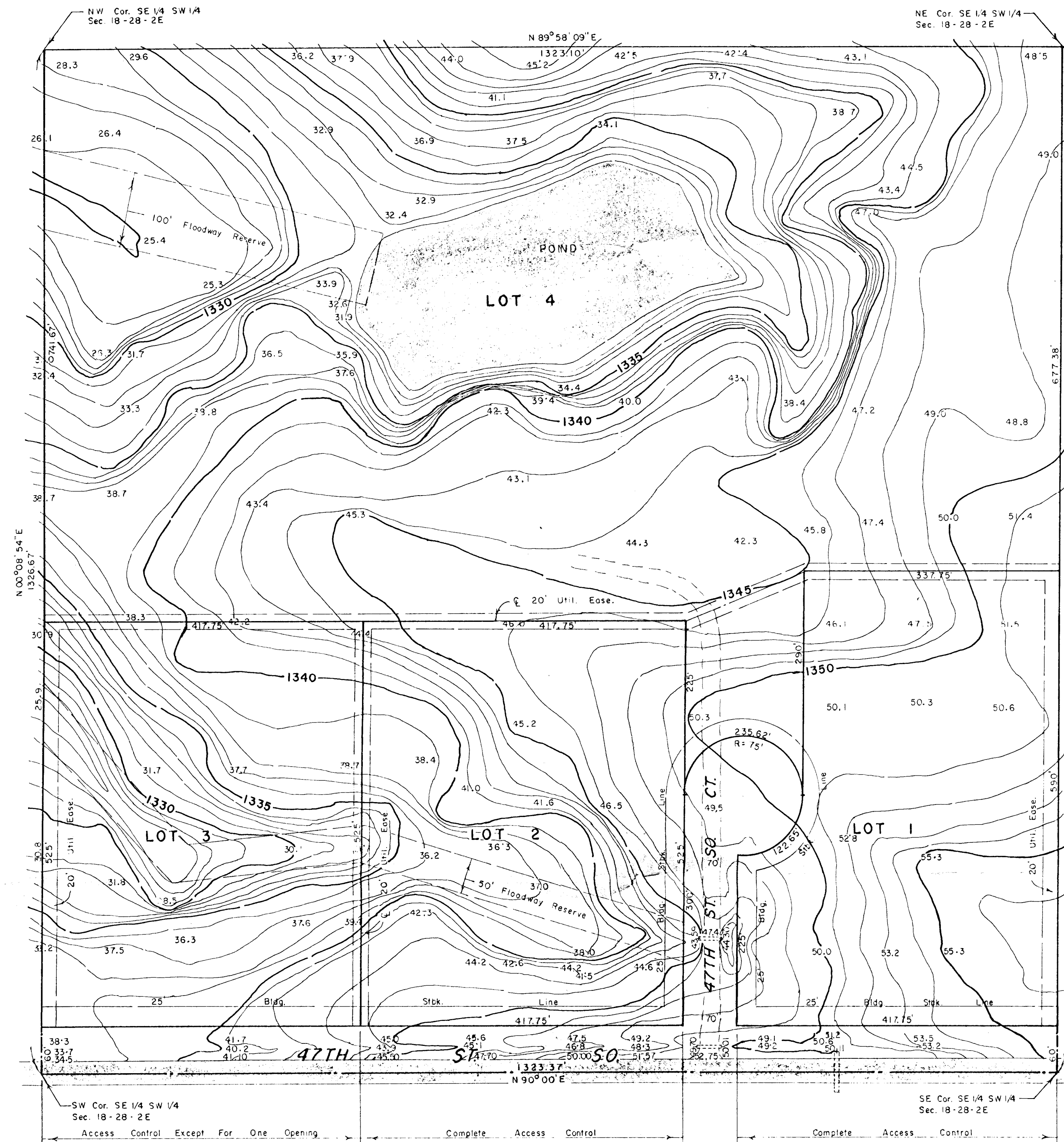


REVISED  
PRELIMINARY PLAT

PETERSON ESTATES  
SEDGWICK COUNTY, KANSAS

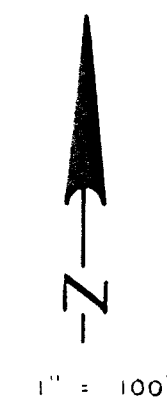
"McCONNELL AIR FORCE BASE"



VICINITY MAP  
1" = 100'

"UNPLATTED"

"UNPLATTED"



OWNER: DELTA HOMES, INC.  
TOM CALDWELL  
420 LA MESA  
DERBY, KS 67037

B.M. = ELEV. 1369.76 - "□" on NE cor. of RCBC, 190' W &  
20' N of SE cor. Sec. 18-28-2E.

Topo made August, 1996

SANDALWOOD SURVEYING INC.  
P.O. BOX 75053  
WICHITA, KS 67275-5053