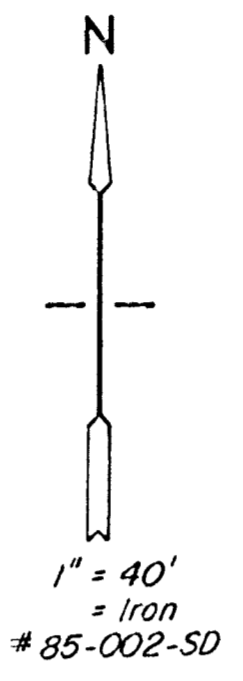
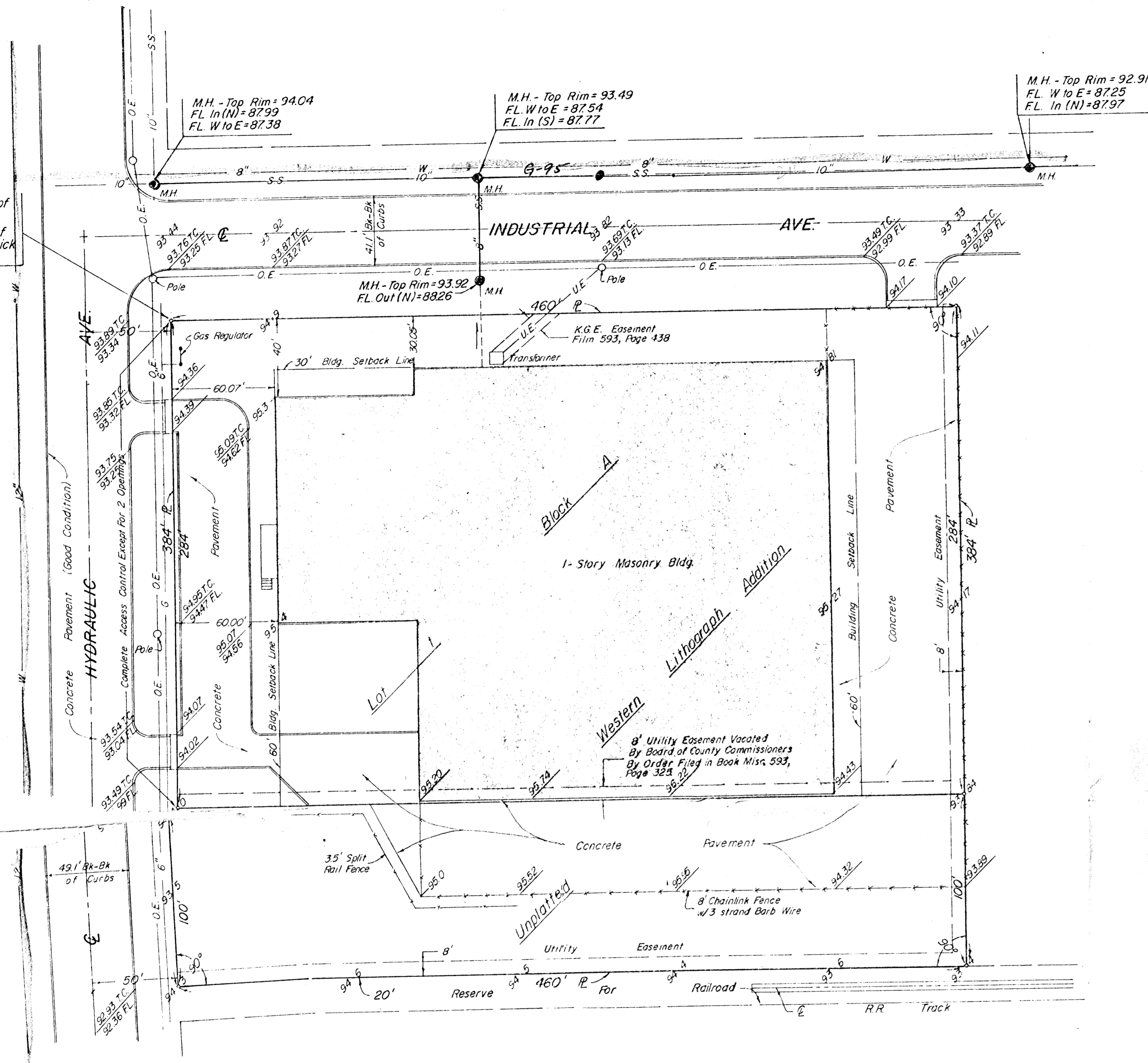


1351'S & 50'E of
N.W. Cor., S.W. 1/4,
Sec. 3, T.28S., R.1E of
the 6th PM, Sedgwick
Co., Ks.



VICINITY MAP

LEGEND:

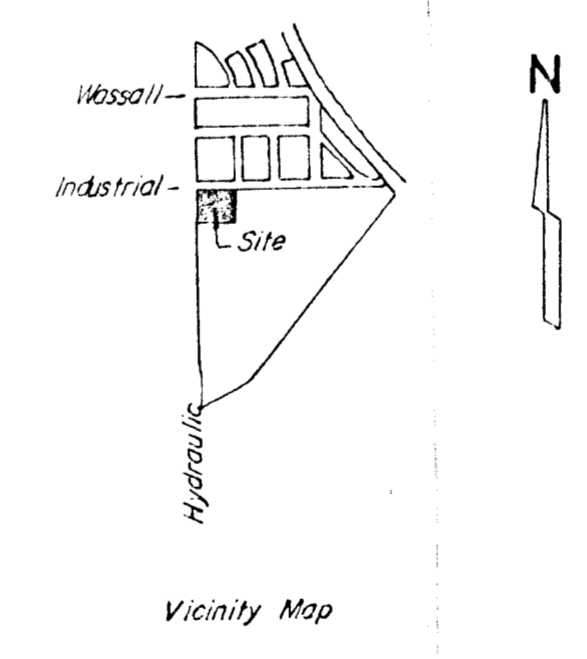
- W = Water Main
- G = Gas Main
- O.E. = Overhead Electric
- U.E. = Underground Electric
- S.S. = Sanitary Sewer
- M.H. = Manhole
- T.C. = Top of Curb
- FL. = Flowline
- PL = Property Line
- 94.81 = Spot Elevation

LEGAL DESCRIPTION

LOT 1, BLOCK A, IN WESTERN LITHOGRAPH ADDITION TO WICHITA, SEDGWICK COUNTY, KANSAS.
AND ALSO
A TRACT BEGINNING 1655.0 FEET SOUTH AND 50.0 FEET EAST OF THE NORTHWEST CORNER OF THE SOUTHWEST QUARTER OF SECTION 3, TOWNSHIP 28 SOUTH, RANGE 1 EAST OF THE 6TH P.M., SEDGWICK COUNTY, KANSAS; THENCE EAST AT RIGHT ANGLES 460.0 FEET; THENCE SOUTH AT RIGHT ANGLES 100.0 FEET; THENCE WEST AT RIGHT ANGLES 460.0 FEET; THENCE NORTH AT RIGHT ANGLES 100.0 FEET TO BEGINNING.

Benchmark:

R.R. Spike in W. Face P.P. at N.E. Cor. Hydraulic and Industrial Ave. Elev. 95.46 City Datum



MOHRING & ASSOCIATES
CONSULTING ENGINEERS
WICHITA

