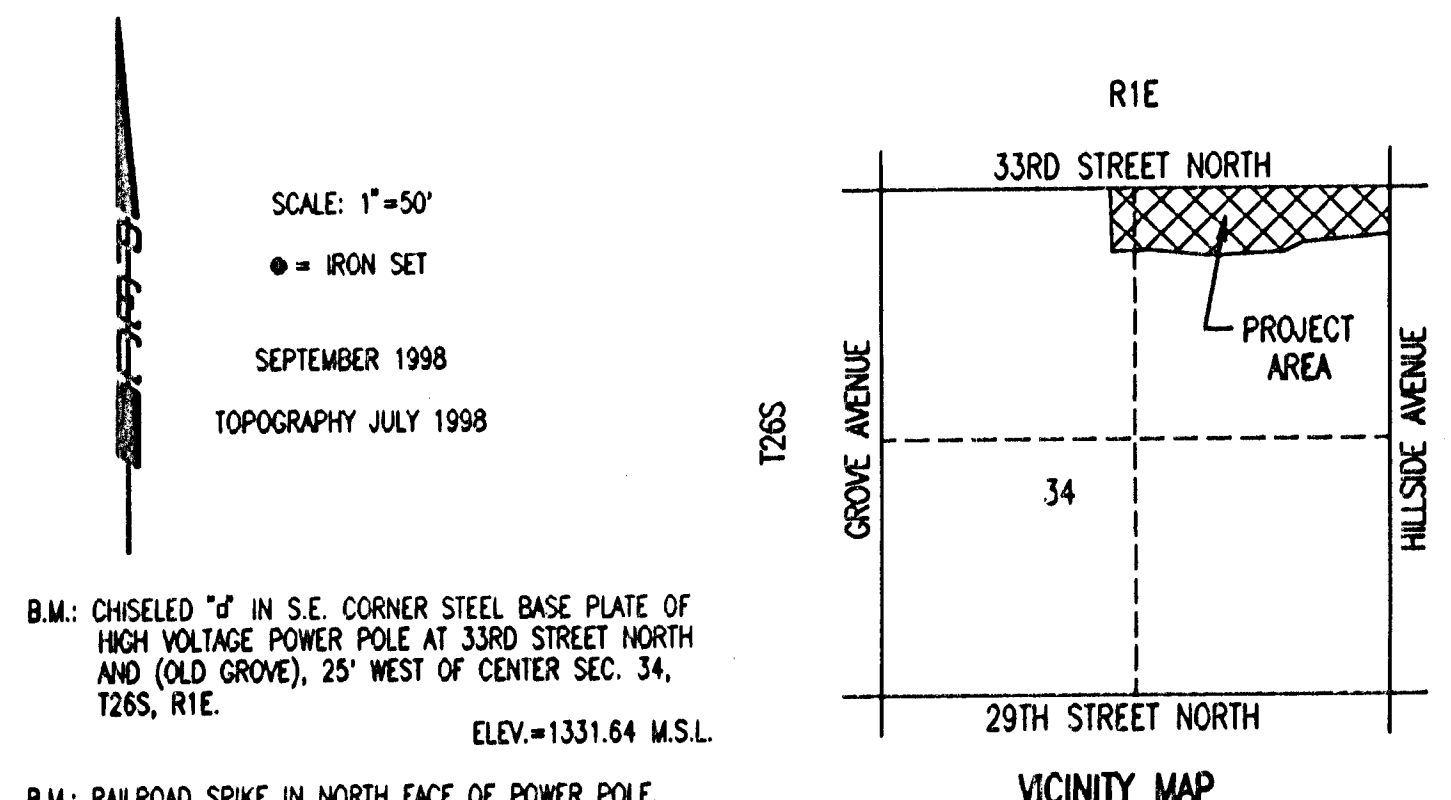


# DRAINAGE PLAN

## NORTHEAST MAINTENANCE SUBSTATION ADDITION

### TO WICHITA, SEDGWICK COUNTY, KANSAS



SCALE: 1"=50'

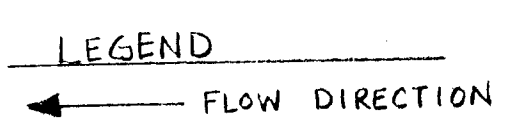
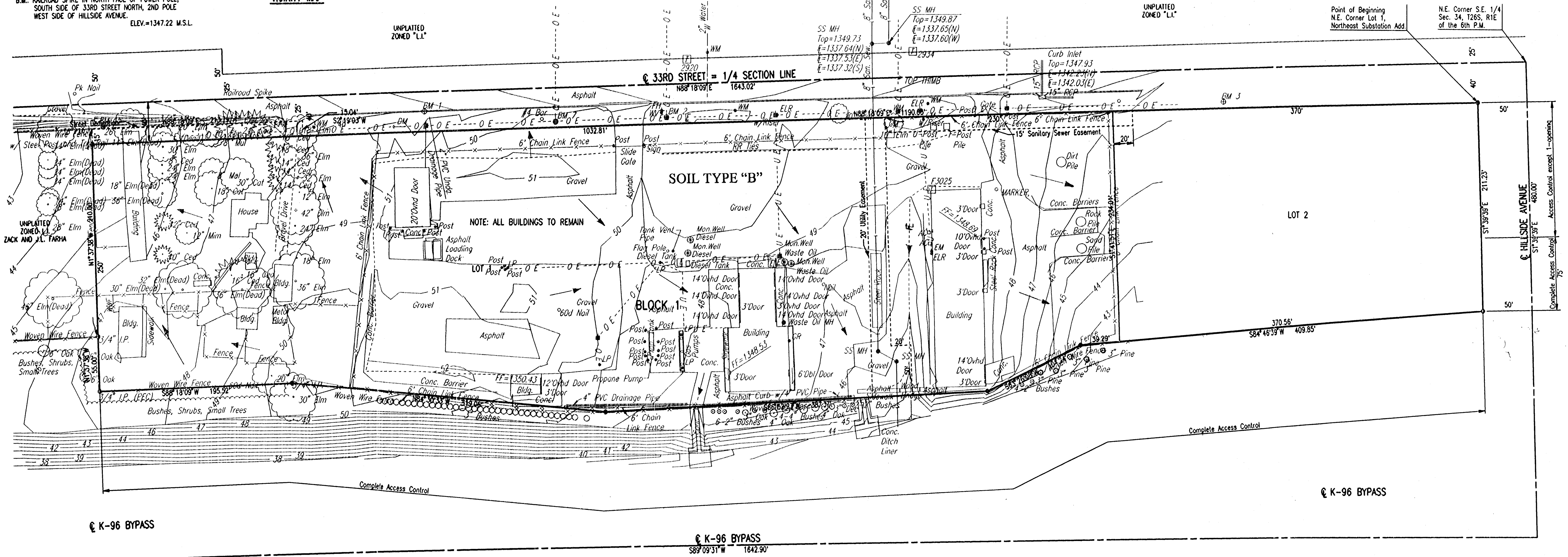
● = IRON SET

SEPTEMBER 1998

TOPOGRAPHY JULY 1998

B.M.: CHISELED "I" IN S.E. CORNER STEEL BASE PLATE OF HIGH VOLTAGE POWER POLE AT 33RD STREET NORTH AND (OLD GROVE), 25' WEST OF CENTER SEC. 34, T26S, R1E. ELEV.=1331.64 M.S.L.

B.M.: RAILROAD SPIKE IN NORTH FACE OF POWER POLE, SOUTH SIDE OF 33RD STREET NORTH, 2ND POLE WEST SIDE OF HILLSIDE AVENUE. ELEV.=1347.22 M.S.L.



Drainage from Lots 1 & 2 to be routed to 33rd St., Hillside, or K-96 Bypass Right-of-Way via drives, parking lots, flumes, private storm sewers, or other approved drainage devices.

DSNR: KER OPER: KER SCALE: 1"=50.00  
 Q:\1998\98350\DRAWING 09-18-1998 09:51:13 am