

DRAINAGE PLAN  
FOR  
LOT 3, BLOCK 1, NORTHBOROUGH ADDITION  
BEREXCO INC. OFFICE PARK AND CORPORATE HEADQUARTERS

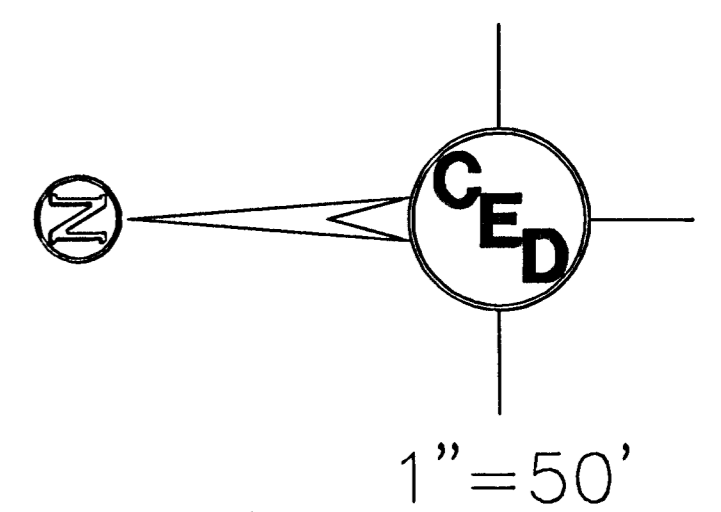
**UNDEVELOPED DRAINAGE DATA**  
Area=13.3 ac.  
C = 0.35  
Tc = 41 min.  
i 5=3.07"/hr.  
Q 5=14.3 cfs

**DRAINAGE DATA**  
Area=10.5 acres  
C = 0.42  
Tc = 21 min.  
i 5=3.97"/hr.  
Q 5=17.5 cfs

**HEC-1 DETENTION ROUTING**

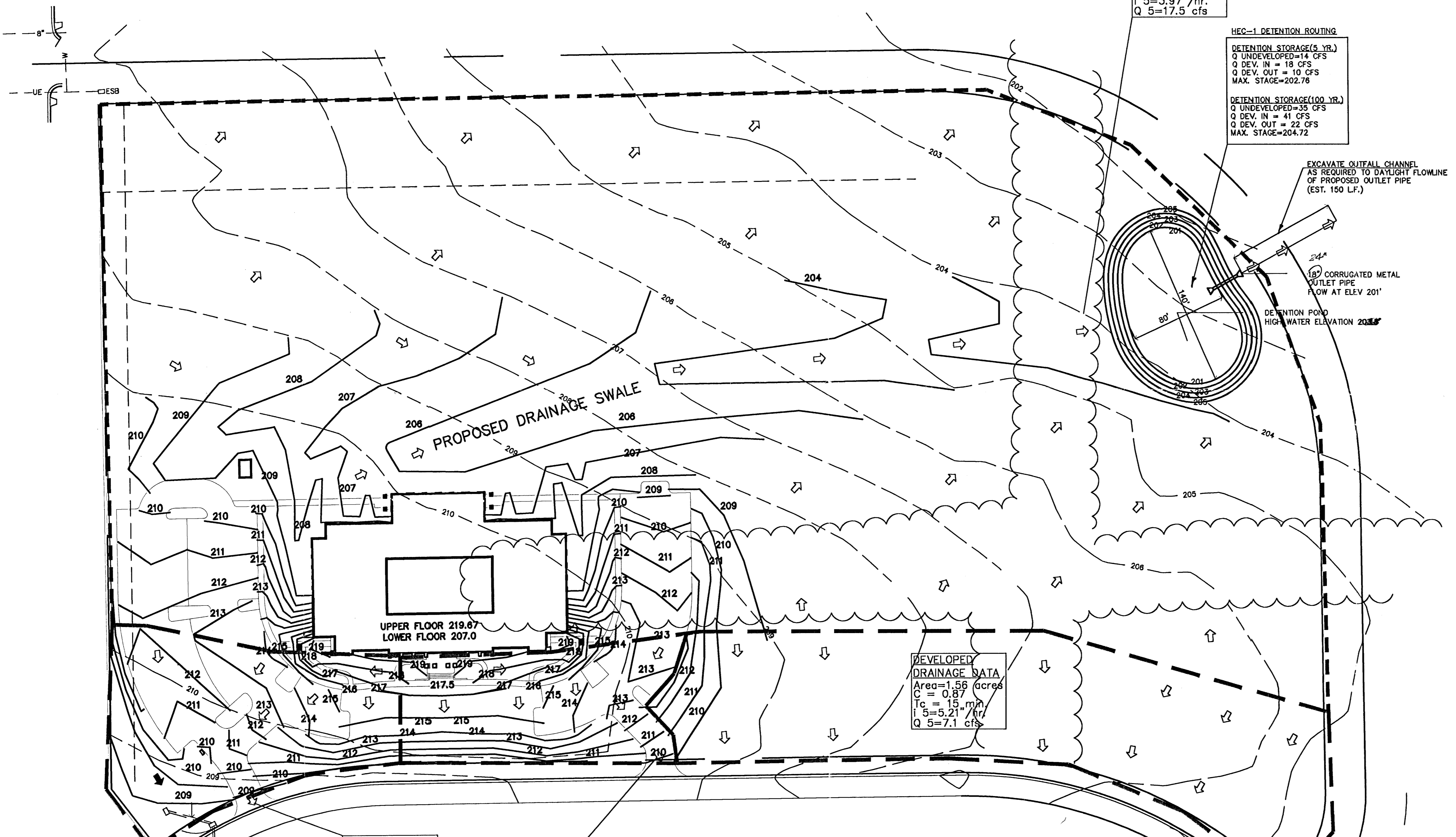
**DETENTION STORAGE(5 YR.)**  
Q UNDEVELOPED=14 CFS  
Q DEV. IN = 18 CFS  
Q DEV. OUT = 10 CFS  
MAX. STAGE=202.78

**DETENTION STORAGE(100 YR.)**  
Q UNDEVELOPED=35 CFS  
Q DEV. IN = 41 CFS  
Q DEV. OUT = 22 CFS  
MAX. STAGE=204.72



**STAGE VS. STORAGE RELATIONSHIP**

STAGE	STORAGE VOLUME(AC-FT)
201	0.00
202	0.24
203	0.515
204	0.825
205	1.175



**DEVELOPED DRAINAGE DATA**  
Area=0.75 acres  
C = 0.87  
Tc = 15 min.  
i 5=5.21"/hr.  
Q 5=3.40 cfs

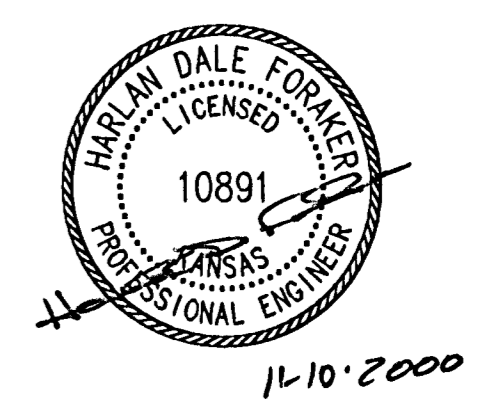
**DEVELOPED DRAINAGE DATA**  
Area=0.50 acres  
C = 0.87  
Tc = 15 min.  
i 5=5.21"/hr.  
Q 5=2.27 cfs

**DEVELOPED DRAINAGE DATA**  
Area=1.56 acres  
C = 0.87  
Tc = 15 min.  
i 5=5.21"/hr.  
Q 5=7.1 cfs

**EXCAVATE OUTFALL CHANNEL**  
AS REQUIRED TO DAYLIGHT FLOWLINE OF PROPOSED OUTLET PIPE (EST. 150 LF.)

**18" CORRUGATED METAL OUTLET PIPE**  
FLOW AT ELEV 201'

**DETENTION POND**  
HIGH WATER ELEVATION 203.87



SEDGWICK COUNTY, KANSAS		
<b>BEREXCO DRAINAGE PLAN</b>		
LOT 3, BLOCK 1, NORTHBOROUGH ADDITION		
PROJ. NO.: 2000		
<b>CERTIFIED ENGINEERING DESIGN</b>		
810 WEST DOUGLAS, SUITE C WICHITA, KANSAS 67203 PH.(316)262-8808 FAX.(316)262-1669		
DESIGNED: HDF	SCALE: 1"=50'	SHEET 1
DRAWN: HDF	DATE: 11/2000	TOTAL 1
CHECKED: HDF	CEG FILE:bx-c1-c2-site.dwg	