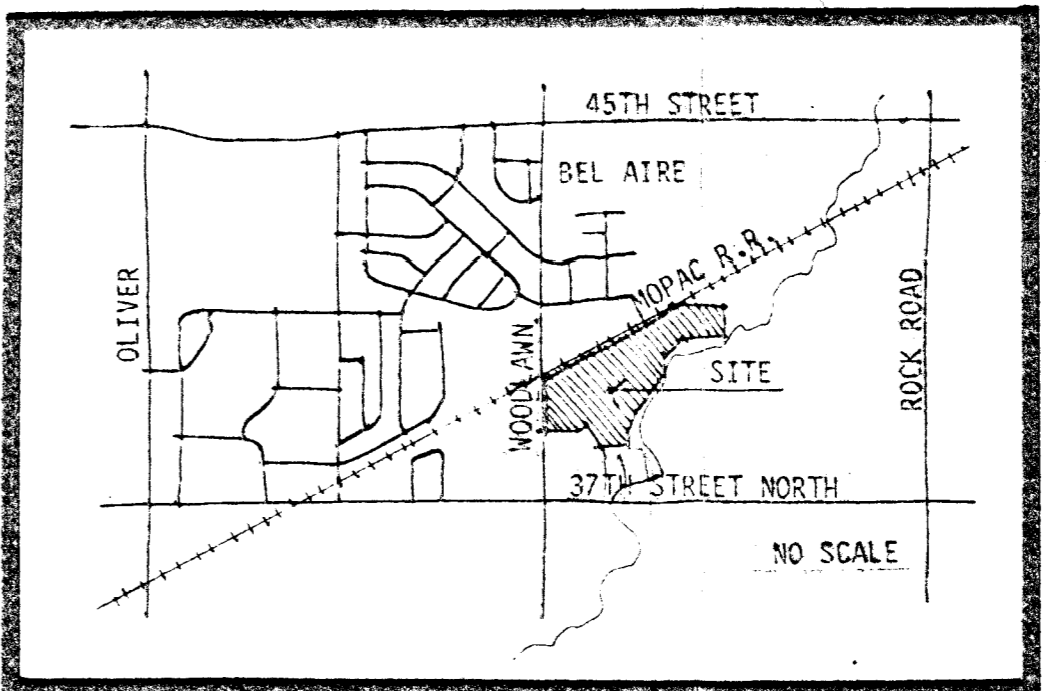
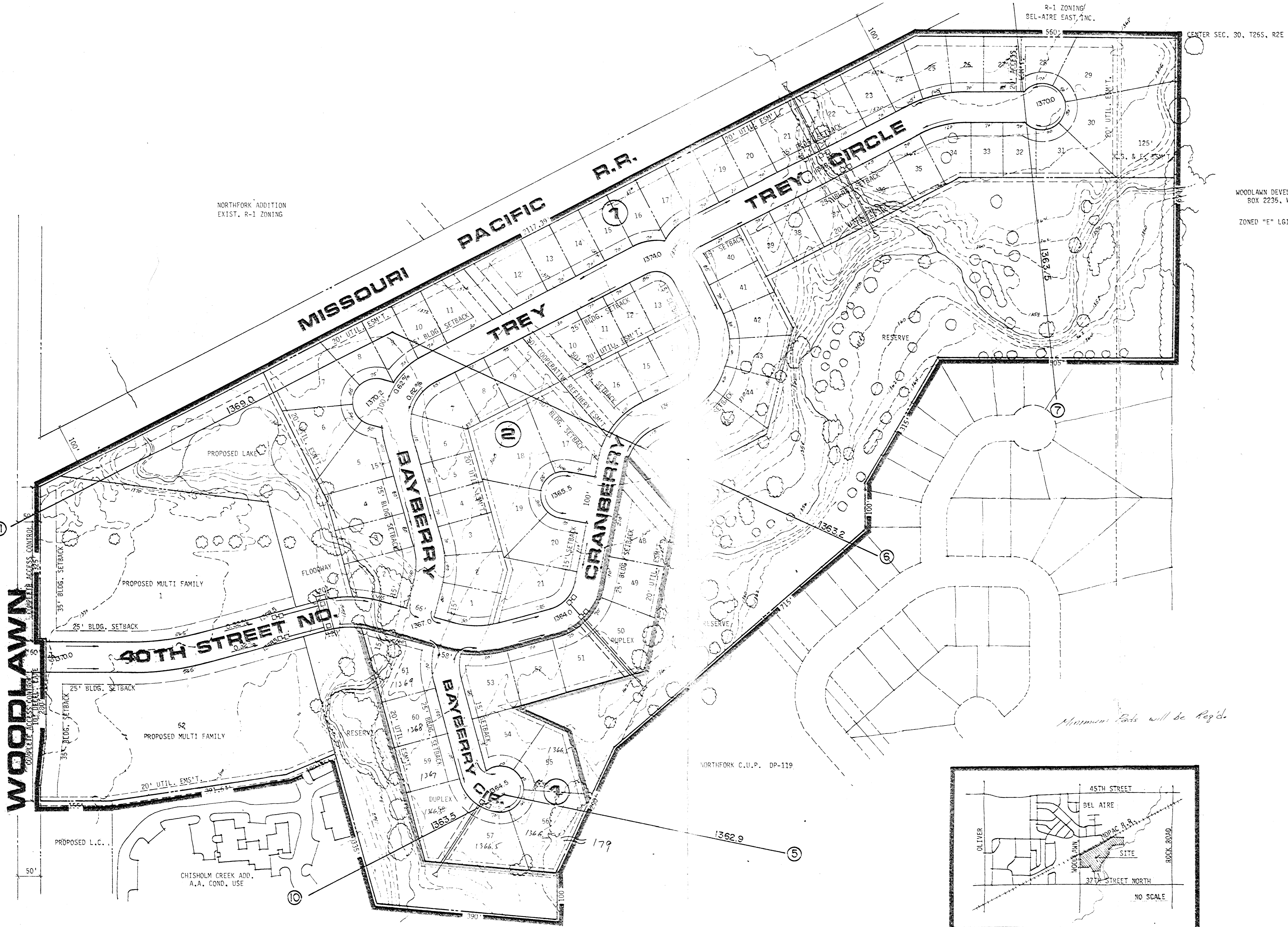


M.H. HENLEY  
1000 S. WOODLAWN

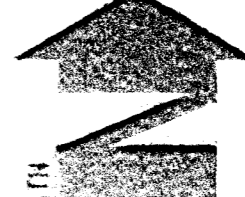
NORTHFORK ADDITION  
EXIST. R-1 ZONING

C.O.R.D. INVESTMENT  
JOINT VENTURE



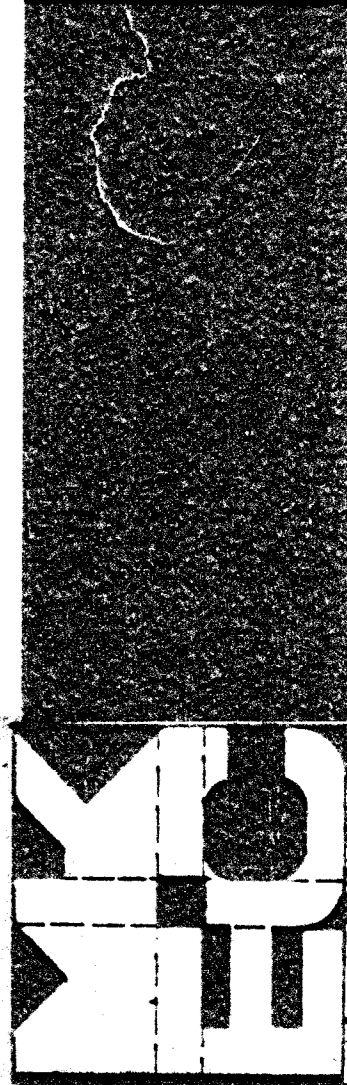
AREA MAP

1' CONTOUR INTERVAL



WOODLAWN DEVELOPMENT COMPANY,  
BOX 2236, WICHITA, KS  
ZONED "E" LIGHT INDUSTRIAL

DRAINAGE CONCEPT PLAN



MID-KANSAS ENGINEERING CONSULTANTS PA  
602-9561  
290 N. ROCK ROAD SUITE 215  
WICHITA, KANSAS 67203

date Aug 20 1982  
rev. SEPT. 8, 1982

sheet title  
Preliminary Plat

project  
Northbrook

NORTHBROOK