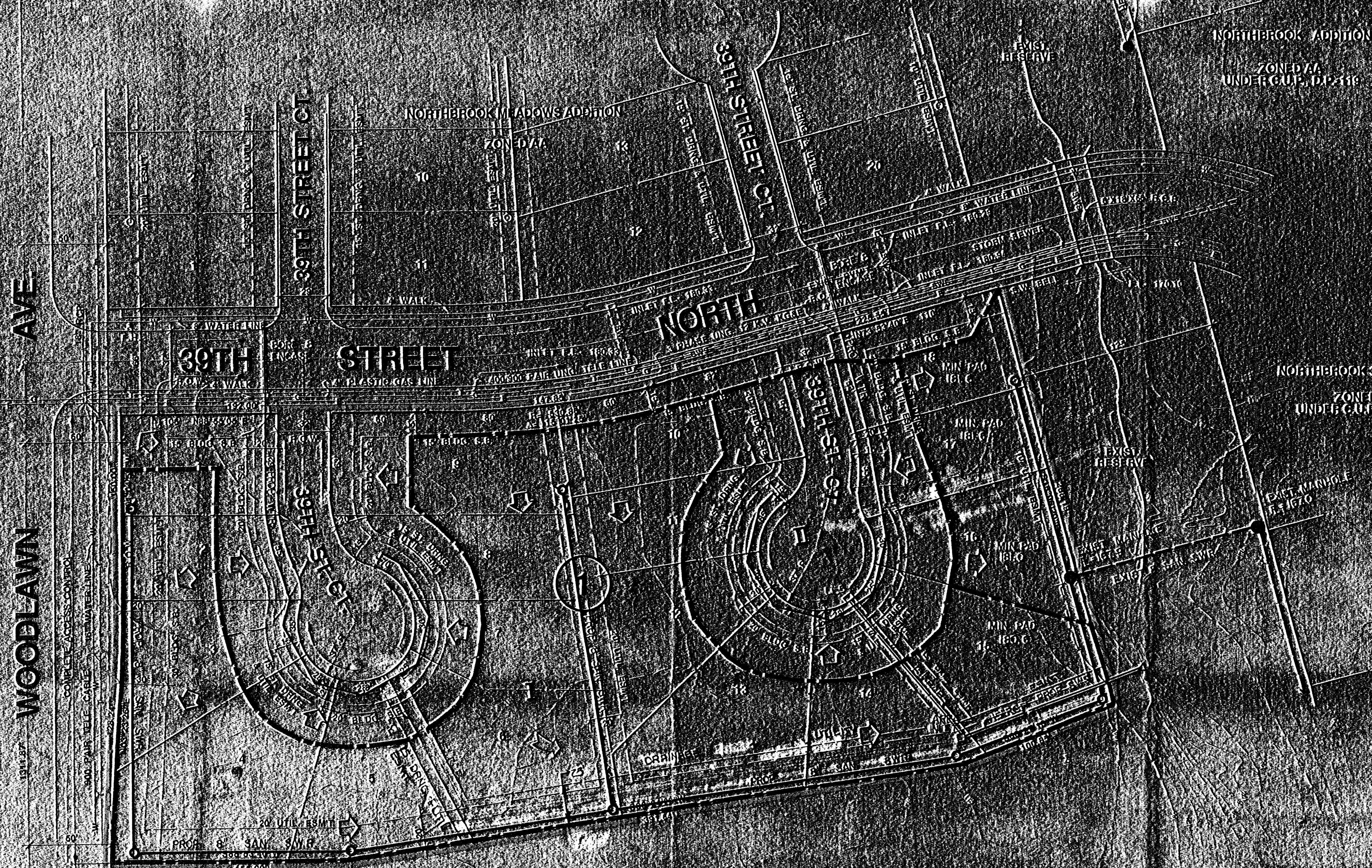


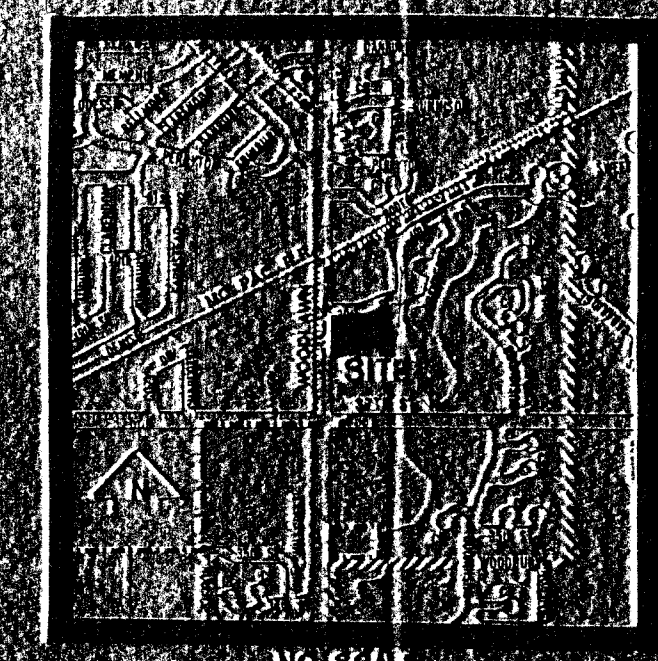
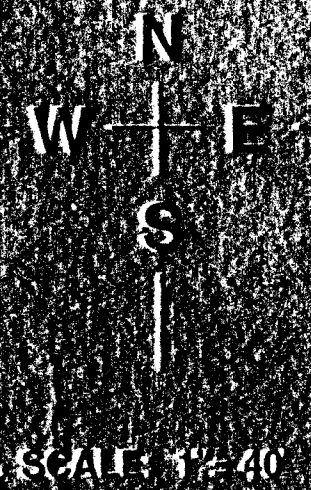


BILGUYUNG DESIGN



CHISHOLM CREEK ADDITION
ZONED R-5
S.W. COR. 1/4 SEC. 16, T.14N., R.2E.
S.W. COR. 1/4 SEC. 16, T.14N., R.2E.

- NOTES**
- 1) BENCHMARK: IRON SPIKE IN POWER POLE ON THE WEST SIDE OF WOODLAWN AT 39TH ST. NORTH ELEV. 58.40 CITY DATUM.
 - 2) A DRAINAGE CONCEPT PLAN SHALL BE PREPARED BY OWNER AND SUBMITTED TO CITY ENGINEER.
 - 3) MIN. PAD ELEVATIONS:
 - 4) BUILDING SETBACKS ARE AS PER NORTHBROOK C.O.P. (D.P. 119) REQUIREMENTS.
 - 5) EXISTING CONTOURS ARE AT 1' INTERVALS.
 - 6) TOPOGRAPHY PREPARED BY M.K.C. 4/16/00.



NO. 6241
LOCATION MAP

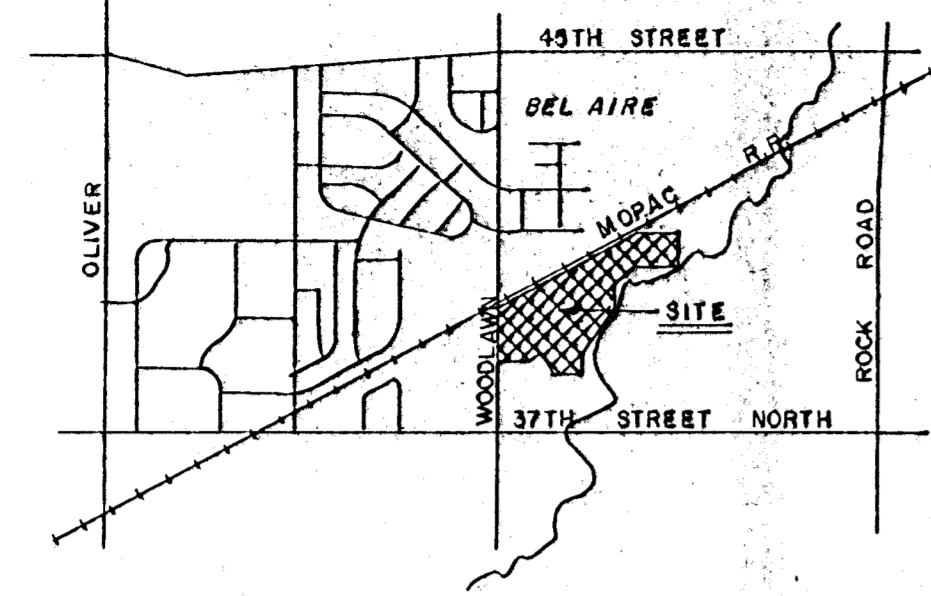
DRAINAGE AREA	AREA / ACRES	AREA / ACRES	C _s	C ₁₀₀	C ₅₀	C ₂₅	C ₁₀	C ₅	C ₂	C ₁	T ₁₀₀	T ₅₀	T ₂₅	T ₁₀	T ₅	T ₂	T ₁	INFEET
WOODLAWN	0.0	0.0	0.5	1.0	2.0	3.0	4.0	5.0	6.0	7.0	8.0	9.0	10.0	11.0	12.0	13.0	14.0	15.0
CHISHOLM CREEK	0.0	0.0	0.5	1.0	2.0	3.0	4.0	5.0	6.0	7.0	8.0	9.0	10.0	11.0	12.0	13.0	14.0	15.0
TOTAL DRAINAGE AREA	0.0	0.0	1.0	2.0	4.0	6.0	8.0	10.0	12.0	14.0	16.0	18.0	20.0	22.0	24.0	26.0	28.0	30.0

DRAINAGE & UTILITY PLAN (FORMALLY LOT 62, BLOCK 1, NORTHBROOK ADDITION UNDER NORTHBROOK C.O.P. (D.P. 119))

NORTHBROOK MEADOWS 2ND ADDITION

OWNER: PORTER AND PLUMMER HOMES, 231 N. EAGLE LAKE DRIVE, BELLAIR, KANSAS, 67220-1011, PH: (316) 887-0500

PROJECT: NORTHBROOK MEADOWS 2ND ADDITION SHEET TITLE: DRAINAGE & UTILITY PLAN DATE: 04/16/00 REV: 01



AREA MAP



4' x 32' CMP
R.L. N = 1364.27
R.L. S = 1367.85

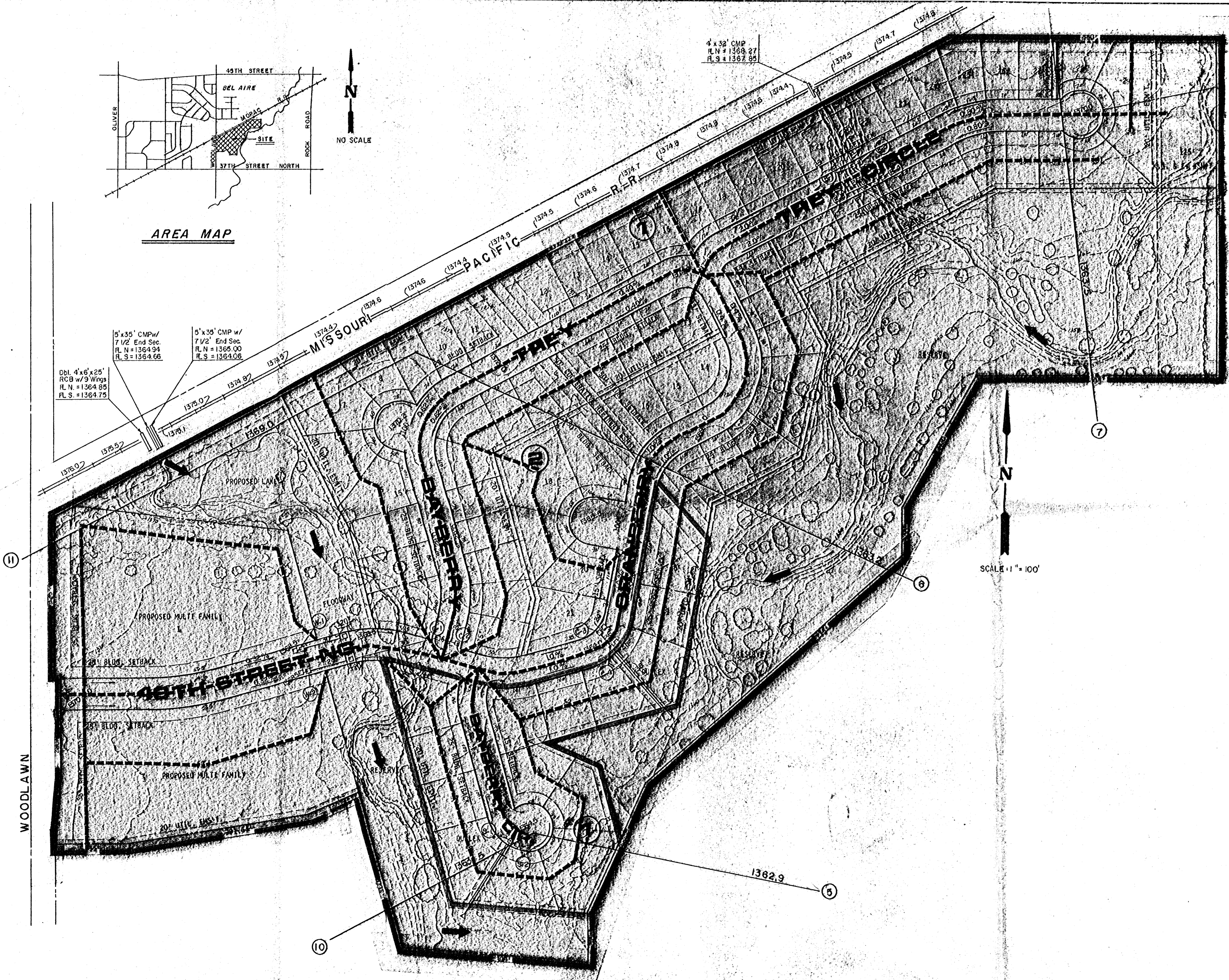
Dbl. 4' x 6' x 25'
RCB w/ 9 Wings
R.L. N = 1364.85
R.L. S = 1364.75

5' x 35' CMP w/
7 1/2' End Sec.
R.L. N = 1364.94
R.L. S = 1364.66

5' x 35' CMP w/
7 1/2' End Sec.
R.L. N = 1365.00
R.L. S = 1364.06

LEGEND

- ①-⑩ NODE IDENTIFICATION NUMBER
- INLET
- ▷ OUTLET
- 0.32% STREET FLOW & GRADE
- ➔ 100 YEAR FLOOD ROUTING
- 1364.0 CENTERLINE ELEV.
- SUB-CATCHMENTS
- ① 1363.2 ⑥ FEMA DESIGN WATER SURFACE



NORTHBROOK

DRAINAGE PLAN

FEBRUARY 1983

MID-KANSAS ENGINEERING CONSULTANTS PA 602-6561
240 NORTH ROCK ROAD SUITE 130
WICHITA, KANSAS 67206

ONE OF ONE