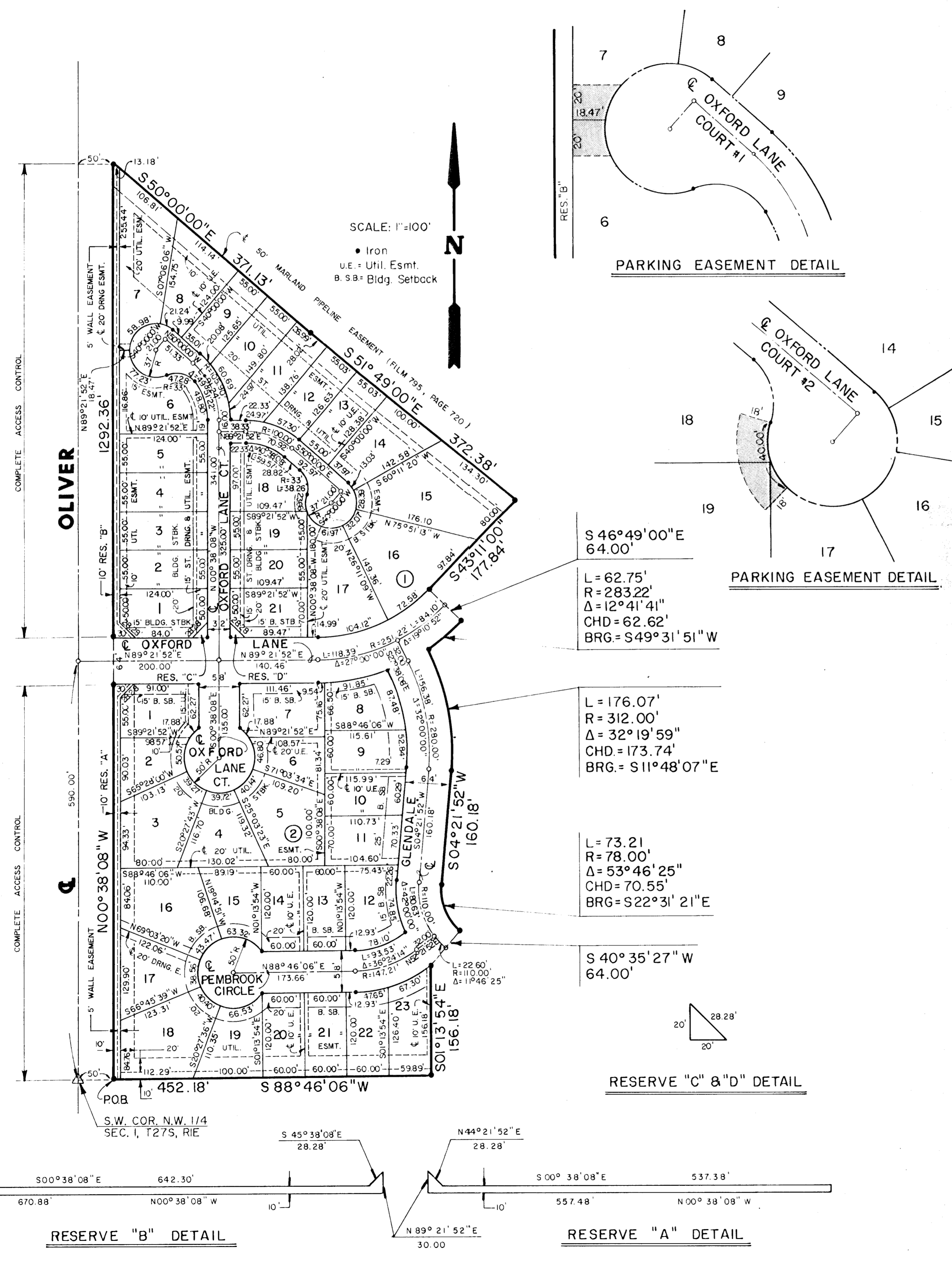


FINAL PLAT OF

NEW BEDFORD PLACE SECOND ADDITION

AN ADDITION TO WICHITA, SEDGWICK COUNTY, KANSAS



I, Kenneth H. Bengtson, a Civil Engineer and Registered Land Surveyor in Kansas, do hereby certify that I have been in responsible charge of surveying and platting of "NEW BEDFORD PLACE SECOND ADDITION", an addition to Wichita, Sedgwick County, Kansas, into lots, blocks, streets and reserves the same being accurately set forth in the accompanying plat and described herein:

A tract of land lying in the Northwest Quarter, Section 1, Township 27 South, Range 1 East of the 6TH P.M., Sedgwick County, Kansas, more particularly described as follows:

Beginning at a point on the South line of said Northwest Quarter, said point lying 50.00 feet East of the Southwest corner of said Northwest Quarter; thence N 00° 38' 08" W, 1292.36 feet parallel with the West line of said Northwest Quarter; thence S 50° 00' 00" E, 371.13 feet; thence S 51° 49' 00" E, 372.38 feet; thence S 43° 11' 00" W, 177.84 feet; thence S 46° 49' 00" E, 64.00 feet to a point on a curve to the right; thence along said curve 62.75 feet, said curve having a central angle of 12° 41' 41", a radius of 283.22 feet, and a long chord of 62.62 feet, bearing S 49° 31' 51" W to a point on a curve to the right; thence along said curve 176.07 feet, said curve having a central angle of 32° 19' 59", a radius of 312.00 feet, and a long chord of 173.74 feet, bearing S 11° 48' 07" E; thence S 04° 21' 52" W, 160.18 feet to a point on a curve to the left; thence along said curve 73.21 feet, said curve having a central angle of 53° 46' 25", a radius of 78.00 feet, and a long chord of 70.55 feet, bearing S 22° 31' 21" E; thence S 40° 35' 27" W, 64.00 feet; thence S 01° 13' 54" E, 156.18 feet to a point on the South line of said Northwest Quarter; thence S 38° 46' 06" W, 452.18 feet along said South line to the point of beginning.

I hereby certify that the details of this plat are correct to the best of my knowledge and belief this ____ day of _____, 1991.

Kenneth H. Bengtson, P.E., R.L.S. #922
Mid-Kansas Engineering Consultants, P.A.
3500 N. Rock Road, Building #800
Wichita, KS

Know all men by these presents that we the undersigned property owners of the land as above set forth in the Civil Engineer's and Registered Land Surveyor's Certificate, have caused the same to be surveyed and platted into lots, blocks, streets and reserves the same to be known as "NEW BEDFORD PLACE SECOND ADDITION", an addition to Wichita, Sedgwick County, Kansas. Easements for the construction and maintenance of public utilities as indicated on the accompanying plat, are hereby granted. The 5.00' wall easement is for the construction and maintenance of a wall, utilities may cross the wall easement. Review and approval by the Sewer Maintenance Division, City of Wichita, is required prior to the issuance of a building permit for wall construction, when the wall crosses a utility easement. The parking easements are for the purpose of offstreet parking. All abutters rights of access to and from Oliver over and across the West line of NEW BEDFORD PLACE SECOND ADDITION, are hereby granted to the City of Wichita, Kansas. Reserves A thru D are platted for landscaping, entry monuments, drainage, and sidewalks. The Reserves shall be owned and maintained by the homeowners association. This plat is in accordance with the Beacon Hill Residential Community Unit Plan (DP-147) which is on file in the office of the City of Wichita, Sedgwick County Metropolitan Area Planning Department.

CRITCHFIELD REAL ESTATE LIMITED PARTNERSHIP, 1985,
a Kansas Limited Partnership

BY: Stephen N. Critchfield, President

STATE OF KANSAS)
SEDGWICK COUNTY) ss.

BE IT REMEMBERED, that on this ____ day of _____, 1991, before me the undersigned, a Notary Public in and for the County and State aforesaid, came Stephen N. Critchfield, President, Critchfield Real Estate Limited Partnership, 1985, a Kansas Limited Partnership, personally known to me to be the same person who executed the foregoing instrument of writing and duly acknowledged the execution of the same.

IN WITNESS WHEREOF, I have hereunto set my hand and affixed my official seal, the day and year last above written.

Notary Public _____
My appointment expires: _____

This plat of NEW BEDFORD PLACE SECOND ADDITION has been submitted to and approved by the Wichita-Sedgwick County Metropolitan Area Planning Commission, Wichita, Kansas.

Dated this ____ day of _____, 1991.

WICHITA-SEDGWICK COUNTY METROPOLITAN AREA PLANNING COMMISSION

_____, CHAIRMAN
George Sherman
_____, SECRETARY
Marvin S. Krout

This plat approved and all dedications shown hereon, if any, accepted by the City Council of the City of Wichita, Kansas, this ____ day of _____, 1991.

_____, MAYOR
Bob Knight

_____, DEPUTY CITY CLERK
Pat Burnett

Enter on transfer record this ____ day of _____, 1991.

_____, COUNTY CLERK
Don Wright

STATE OF KANSAS)
SEDGWICK COUNTY) ss.

This is to certify that this instrument was filed for record in the Register of Deeds office this ____ day of _____, 1991.

_____, REGISTER OF DEEDS
Pat Kettler

_____, DEPUTY
Ed Resa