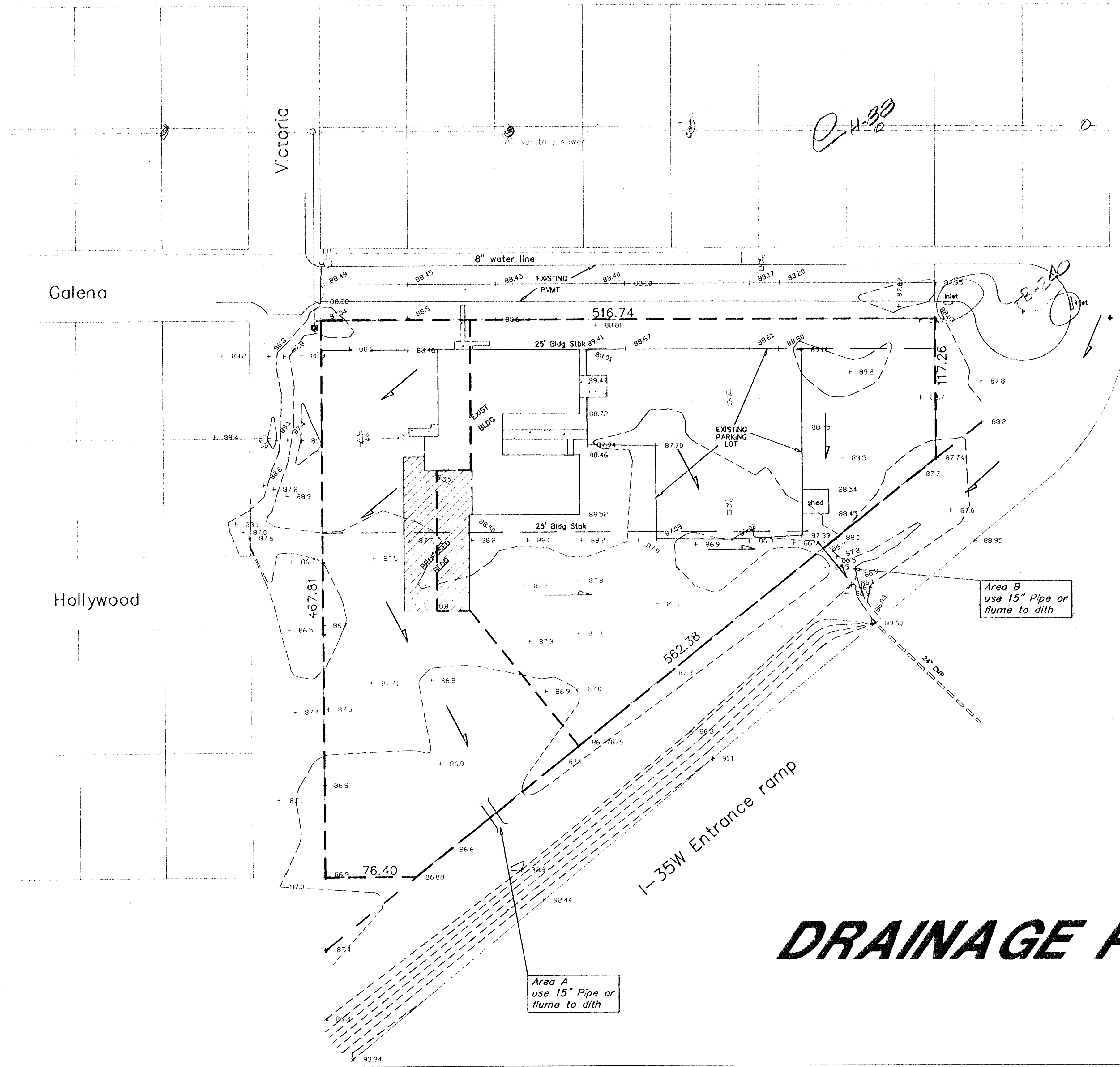
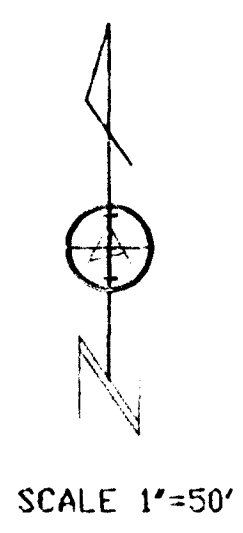


SOUTH CITY BAPTIST CHURCH ADDITION

Fortuna



Hydraulic



Runoff Calculations
 by Rational Formula: $Q=CIA$

D.A. = 3.47 Ac. $T_c = 15$ min
 Impervious Area ≤ 1.7 Acres = 0.49% (after expansion)
 Soil Hydrologic Group "A" (Pc)
 $C_5=0.50$ $C_{100}=0.60$
 $I_5=4.56$ in/hr $I_{100}=7.37$ in/hr
 $Q_5=2.3$ cfs/acre, $Q_{100}=4.4$ cfs/acre

Area A D.A. = 1.35 Ac.
 $Q_5=3.1$ cfs $Q_{100}=5.9$ cfs

Area B D.A. = 2.12 Ac.
 $Q_5=4.9$ cfs $Q_{100}=9.3$ cfs

SDM SKR
 B 240



DRAINAGE PLAN

250 Mathewson
 Wichita, KS 67211
 (316) 263-0082

ARMSTRONG LAND SURVEY, P.A.

