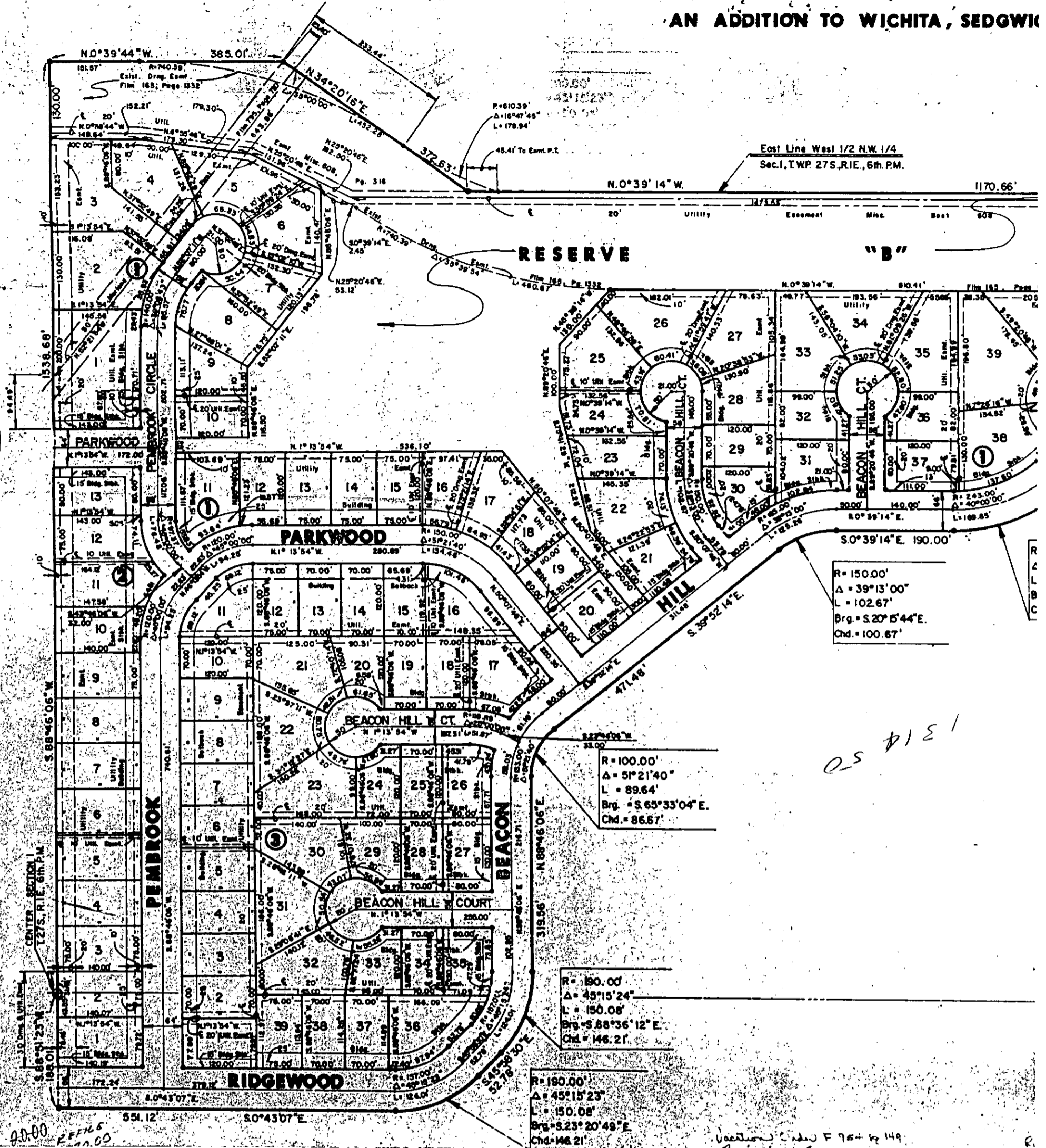
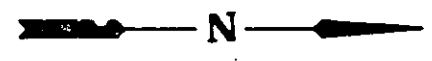


FINAL PLAT OF  
**BEACON HILL**  
 AN ADDITION TO WICHITA, SEDGWICK COUNTY, KANSAS



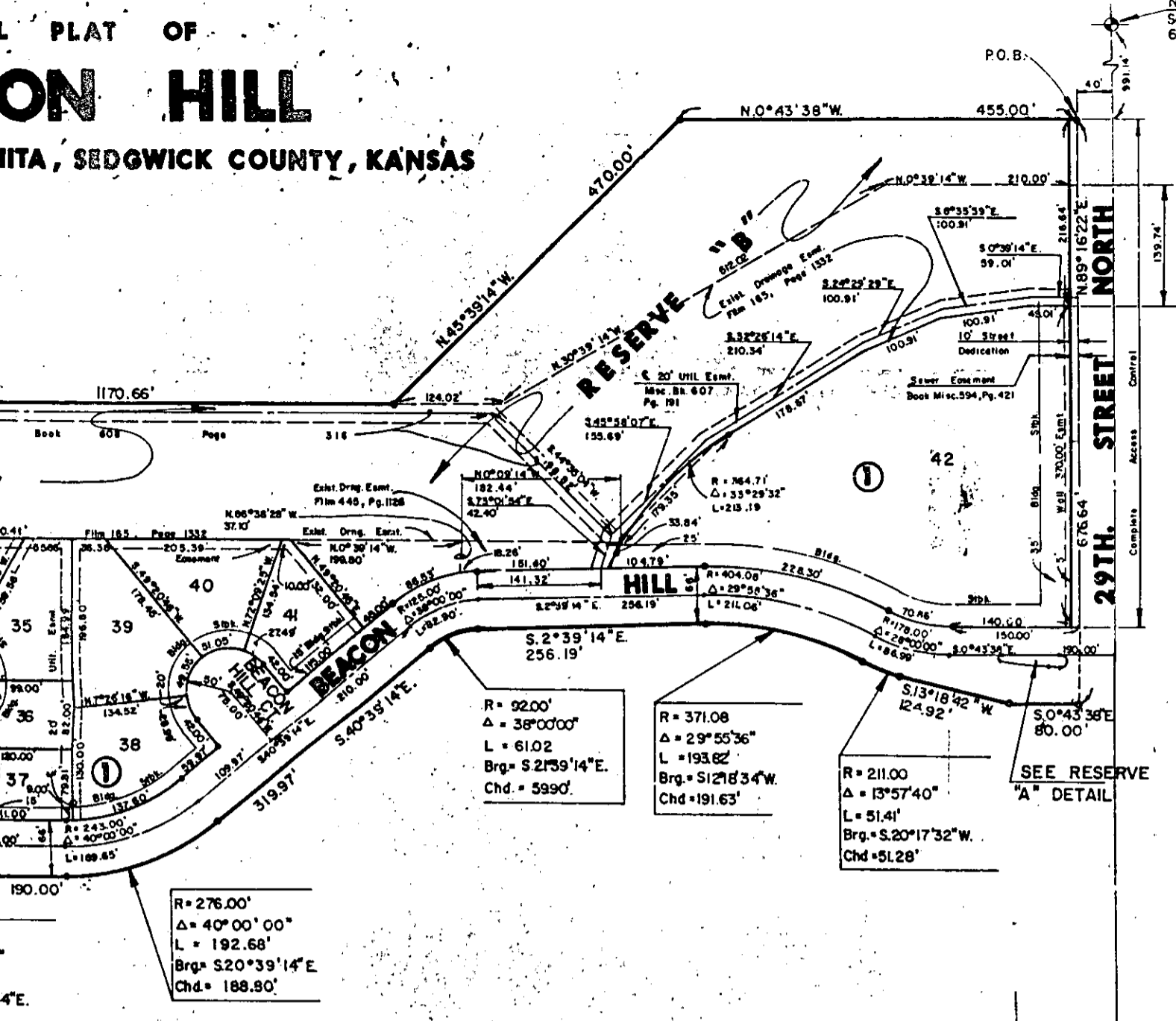
PLAT OF  
**ON HILL**  
 WITA, SEDGWICK COUNTY, KANSAS

NW Cor., NW 1/4  
 Sec. 1, T. 27 S., R. 1 E.  
 6th. P.M.



Scale: 1" = 100'

LEGEND  
 • = Iron



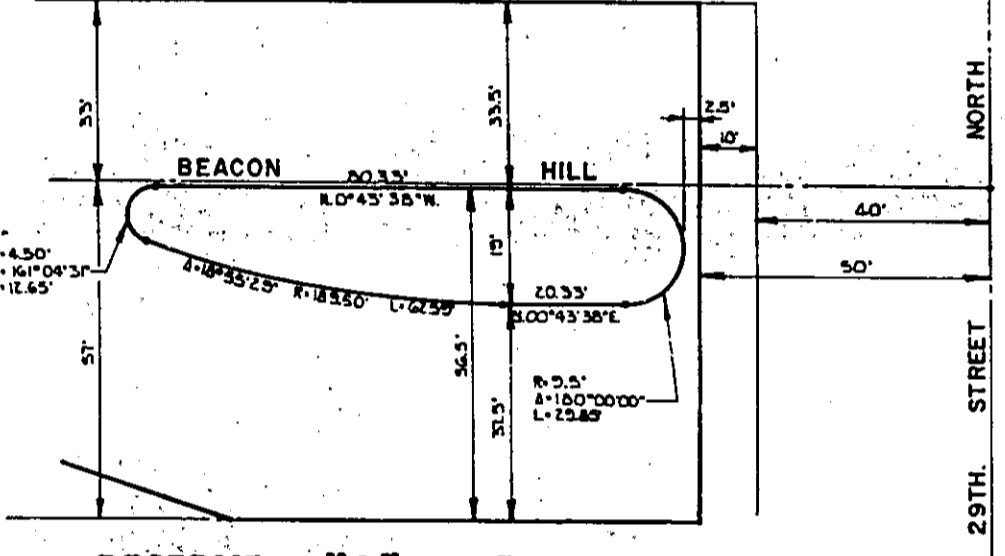
R = 276.00'  
 $\Delta = 40^{\circ}00'00''$   
 L = 192.68'  
 Brq. = S20°39'14"E  
 Chd. = 188.80'

R = 92.00'  
 $\Delta = 38^{\circ}00'00''$   
 L = 61.02  
 Brq. = S27°59'14"E  
 Chd. = 59.90'

R = 371.08  
 $\Delta = 29^{\circ}55'36''$   
 L = 193.82  
 Brq. = S127°18'34"W  
 Chd. = 191.63'

R = 211.00  
 $\Delta = 13^{\circ}57'40''$   
 L = 51.41  
 Brq. = S20°17'32"W  
 Chd. = 51.28'

SEE RESERVE  
 "A" DETAIL



RESERVE "A" DETAIL

NW Cor., NE 1/4  
 Sec. 1, T. 27 S., R. 1 E.  
 6th. P.M.

Revised Plat F 125 10 961