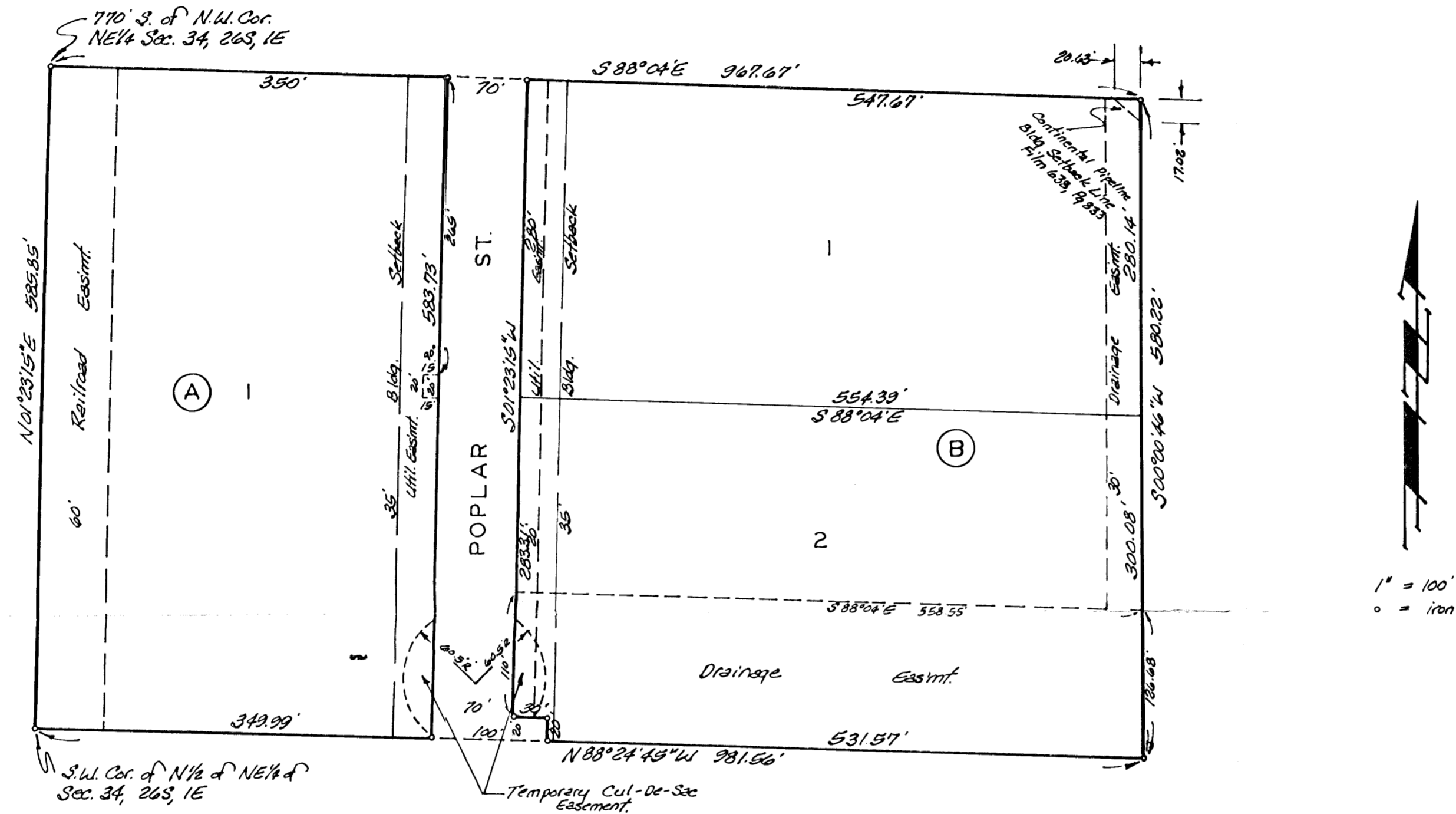


NORTHRIDGE INDUSTRIAL PARK SECOND ADDITION

WICHITA, SEDGWICK COUNTY, KANSAS



This plat of "NORTHRIDGE INDUSTRIAL PARK SECOND ADDITION", Wichita, Sedgwick County, Kansas, has been submitted to and approved by the Wichita-Sedgwick County Metropolitan Area Planning Commission, Wichita, Kansas.
Dated this _____ day of _____, 1990.
Wichita-Sedgwick County Metropolitan Area Planning Commission.

Wayne L. Brinegar Chairman

Marvin J. Krout Secretary

This plat approved and all dedications shown hereon accepted by the City Council of the City of Wichita, Kansas, this _____ day of _____, 1990.

Bob Knight Mayor

John Moir City Clerk

Entered on transfer record this _____ day of _____, 1990.

Don Wright County Clerk

State of Kansas 2 S.S. Sedgwick County 5 S.S. We, Baughman Company, P.A., surveyors in and for said county and state do hereby certify that we have surveyed and platted "NORTHRIDGE INDUSTRIAL PARK SECOND ADDITION", Wichita, Sedgwick County, Kansas and that the accompanying plat is a true and correct exhibit of the property surveyed, described as the N1/4 of the NE1/4 of Sec. 34, Twp. 26-S, R-1-E of the 6th P.M., Sedgwick County, Kansas, except the east 50 acres thereof and except that part described as beginning at the N.W. Corner of said NE1/4; thence east, along the north line of said NE1/4, 949.19 feet to the N.W. Corner of said east 50 acres; thence south, along the west line of said east 50 acres 770.40 feet; thence west, parallel with the north line of said NE1/4, 967.67 feet to the west line of said NE1/4; thence north, along the west line of said NE1/4, 770 feet to the place of beginning.

Public easements and dedications of record being vacated by virtue of K.S.A. 12-512(b).

Baughman Company, P.A.

Date _____

Mark A. Savoy Surveyor

Know all men by these presents that we, the undersigned, have caused the land described in the surveyors certificate to be platted into lots, blocks and a street to be known as "NORTHRIDGE INDUSTRIAL PARK SECOND ADDITION", Wichita, Sedgwick County, Kansas. The street is hereby dedicated to and for the use of the public. The utility easements are hereby granted for the construction and maintenance of all public utilities. The railroad easement is hereby granted for railroad spur purposes. The drainage easements are hereby granted for drainage purposes and for water run-off detention purposes. The temporary Cut-De-Sac easement will expire at such time as the street is either extended further south or terminated as a permanent Cut-De-Sac on the property to the south.

Leasing & Rental Services, Inc.

Leslie Rudd President

State of Kansas 2 S.S. Sedgwick County 5 S.S. This is to certify that this plat has been filed for record in the office of the Register of Deeds, this _____ day of _____, 1990, at _____ o'clock _____ M., and is duly recorded.

Pat Kettler Register of Deeds

Ed Resa Deputy

State of Kansas 2 S.S. Sedgwick County 5 S.S. The foregoing instrument acknowledged before me, this _____ day of _____, 1990, by Leslie Rudd, President of Leasing & Rental Services, Inc. on behalf of the corporation.

My Appt. Exp. _____ Notary Public