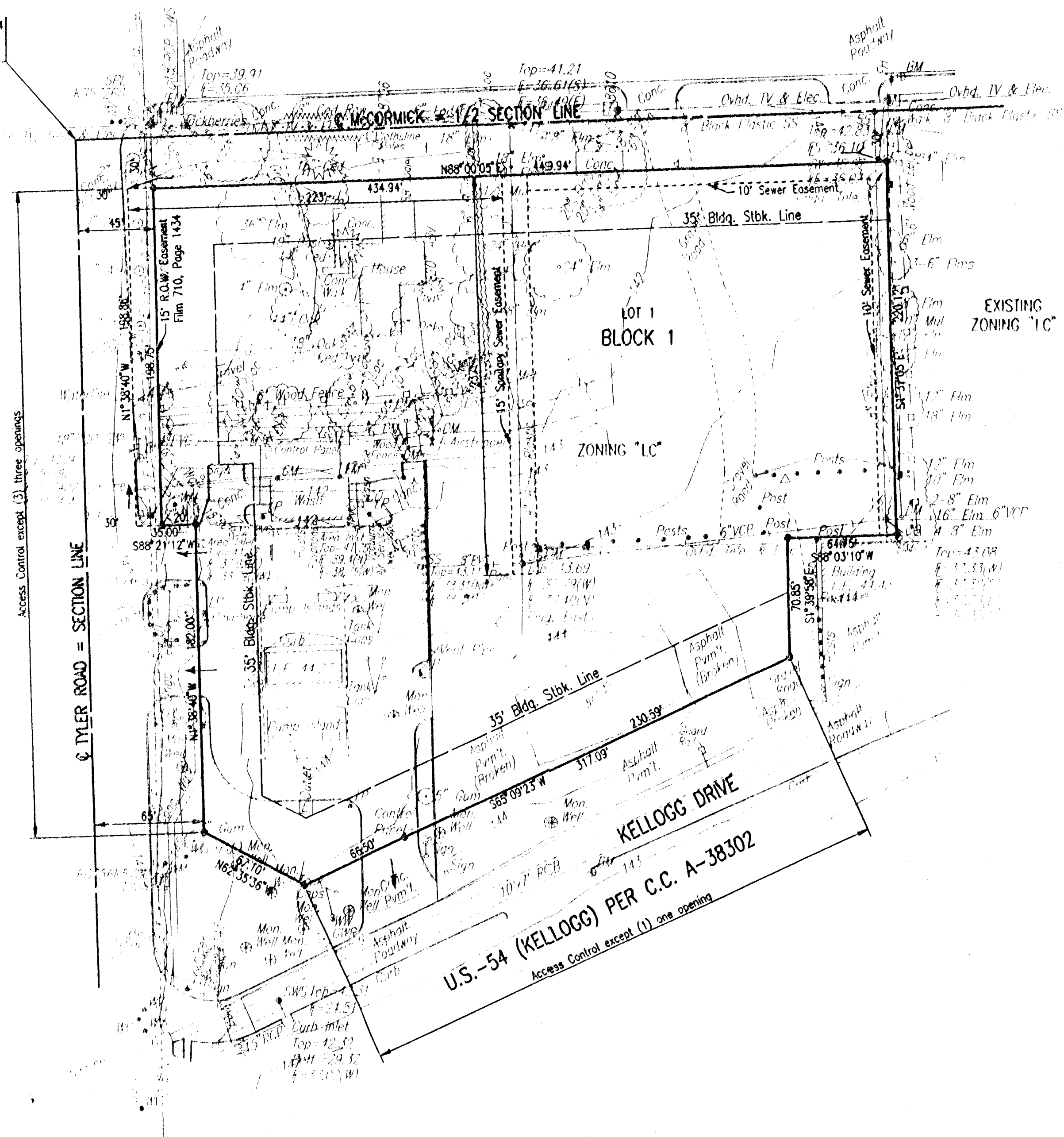


# DRAINAGE PLAN

## PHILLIPS 66 KELLOGG AND TYLER ADDITION

### TO WICHITA, SEDGWICK COUNTY, KANSAS

N.W. Corner, S.W. 1/4  
Sec. 28, T27S, R1W  
of the 6th P.M.



SCALE: 1"=50'  
= IRON SET  
AUGUST 1998

B.M.: CITY OF WICHITA STANDARD DISC AT N.E. CORNER OF TYLER ROAD AND  
McCORMICK, 82± EAST AND 32± NORTH OF THE INTERSECTIONS OF  
THE CENTERLINES.  
ELEV.=1328.15 M.S.L.  
ELEV.=140.75 CITY DATUM

Area (Ac)	C2	12	C2 (G6)	C100	100	C153 (G6)
3.16	0.88	3.90	8.1	0.80	7.38	10.6

Drainage from this lot to be routed to existing storm water sewer inlets or structures via drives, parking lots, fumes, private storm water sewers, or other approved drainage devices.