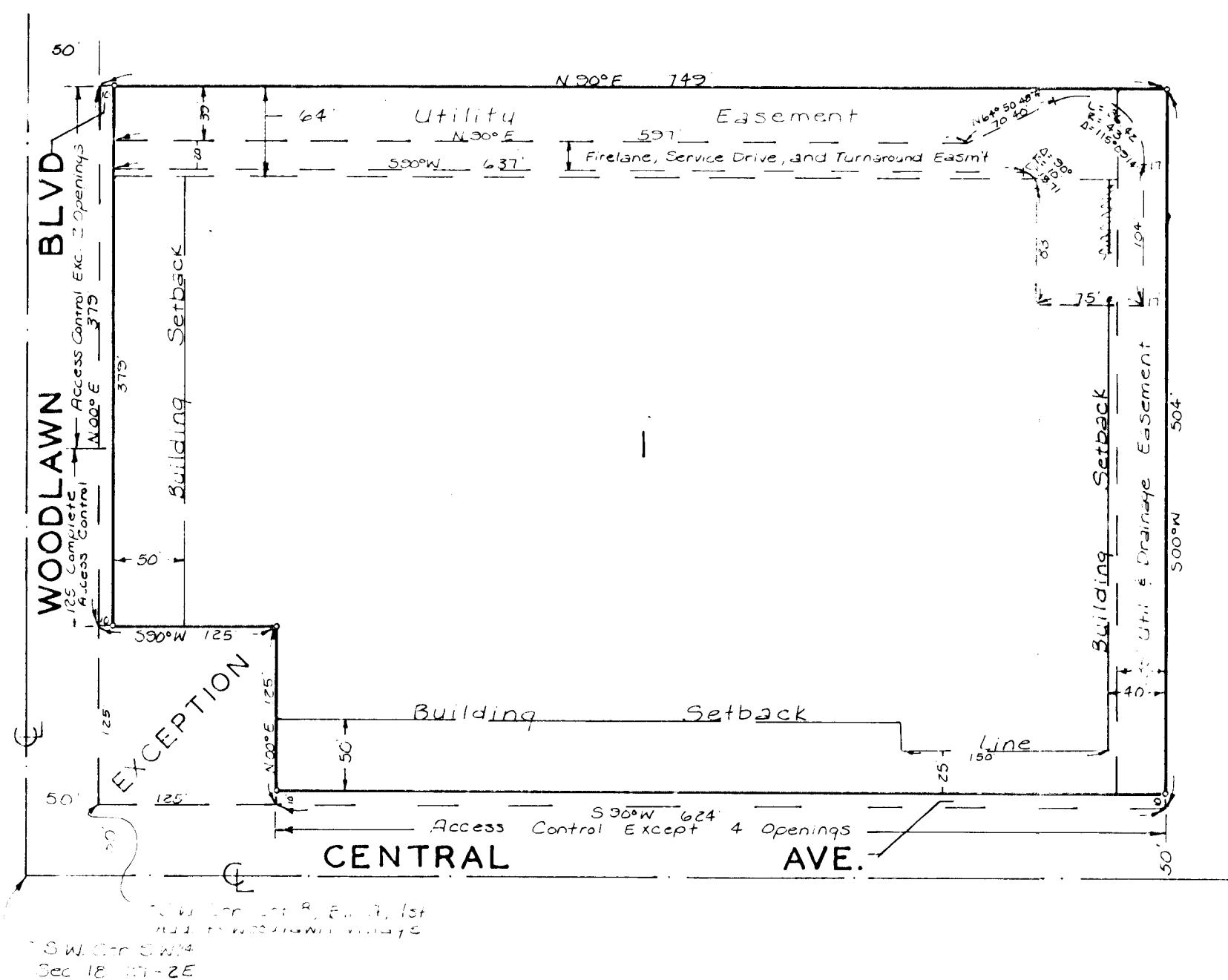


NORMANDIE CENTER ADDITION

WICHITA, KANSAS



State of Kansas }
Sedgwick County } ss We, Baughman Company, P.A.,
Surveyors in aforesaid county and state do hereby
certify that we have surveyed and platted "NORMANDIE
CENTER ADDITION," Wichita, Kansas, and that the
accompanying plat is a true and correct exhibit of the
property surveyed described as and being a replat of
Lot B, Block A, First Addition to Woodlawn Village,
Wichita, Sedgwick County, Kansas, except the south
125 feet of the west 125 feet thereof and all of Parking
Reserve "A" and "B" in Replat of Lots 1 through 7,
Block A, First Addition to Woodlawn Village, Wichita,
Sedgwick County, Kansas, together with all of the 20
foot alley adjacent to said Lot B, Block A, and said
Parking Reserve "A" and "B".
The existing alley, Easements and Building Setback
Lines being vacated by virtue of KSA 12-512 b.

Baughman Company, P.A.

This plat of "NORMANDIE CENTER ADDITION,"
Wichita, Kansas has been submitted to and approved by the Wichita-
Sedgwick County Metropolitan Area Planning Commission, Wichita, Kan-
sas. Dated this ___ day of ___, 1983.
Wichita-Sedgwick County Metropolitan Area Planning Commission

Sue L. Crockett Chairman

Marvin C. Knout Secretary

This plat approved and all dedications shown
hereon accepted by the City Council of the City of Wichita, Kan-
sas, this ___ day of ___, 1983.

Bob Knight Mayor

John Mair City Clerk

Entered on transfer record this ___ day
of ___, 1983.

Don Wright County Clerk

Know all men by these presents that we, the
undersigned, have caused the land described in the surveyors certifi-
cate to be platted into a lot and streets to be known as "NORMANDIE
CENTER ADDITION," Wichita, Kansas. The utility easement is hereby
granted as indicated for the construction and maintenance of all public
utilities. The Drainage and Utility easement is hereby granted as indi-
cated for drainage purposes and for the construction and maintenance
of all public utilities. The firelane, service drive and turn-around
easement is hereby granted for fire department, service vehicle and
employee, ingress and egress purposes. The street dedications are
hereby dedicated to and for the use of the public. All abutters
rights of access to or from Central Ave., over and across the south
line of Lot 1 and to or from Woodlawn Blvd., over and across the west
line of Lot 1 are hereby granted to the City of Wichita, provided how-
ever that Lot 1 shall have access to Central Ave. at 4 points over
the south line thereof and shall have access to Woodlawn Blvd. at
3 points over all except the south 125 feet of the west line thereof, all
shall be determined by the City Engineer of the City of Wichita,
Kansas.

Normandie Village Associates, a Kansas Limited Partnership
By Normandie Village Partners, Inc. (General Partner) _____
President

State of Kansas }
Sedgwick County } ss The foregoing instrument was acknowledged before
me this ___ day of ___, 1983, by _____
President of Normandie Village Associates, a Kansas Limited Partnership,
on behalf of the partnership

My Appt Exp _____ Notary Public

State of Massachusetts }
County of Worcester } ss The foregoing instrument was acknowledged
before me this ___ day of ___, 1983, by James W.
Harper, Assistant Vice-President of SMA Life Assurance Company
on behalf of the company

My Appt Exp _____ Notary Public

We the undersigned, holders of a mortgage on
the above described property do hereby consent to this plat of "NORMANDIE
CENTER ADDITION," Wichita, Kansas.

SMA Life Assurance Company

James W. Harper Asst. V.P.