

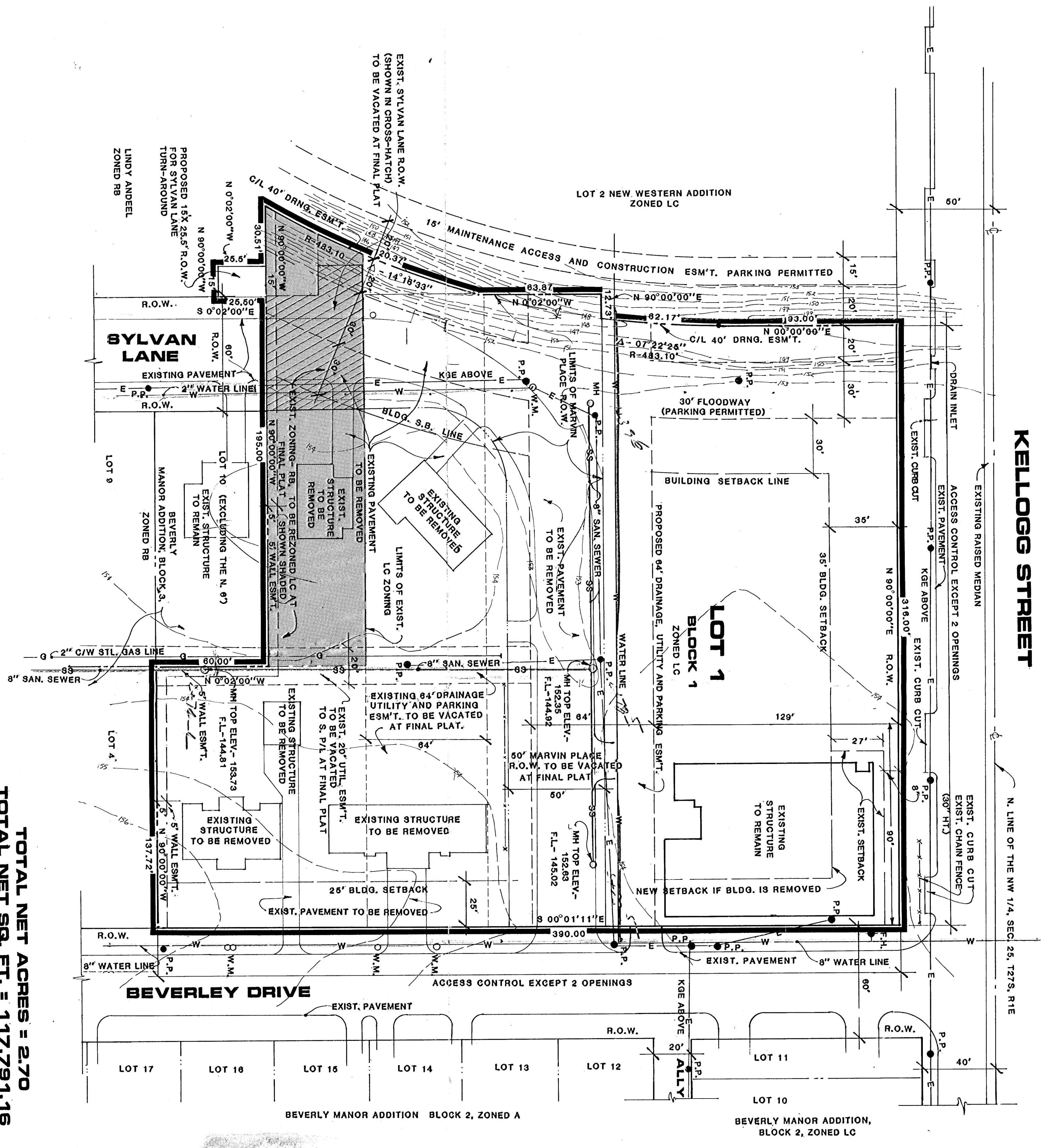
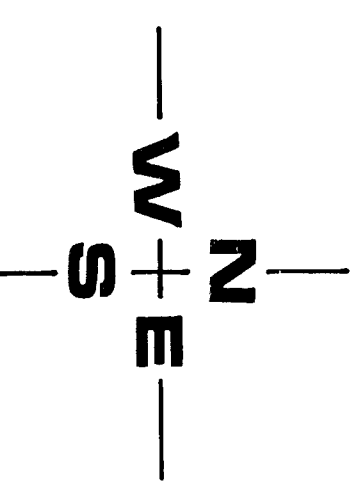
PRELIMINARY PLAT (A REPLAT OF LOT 1, BLOCK 1, NEW WESTERN 2ND ADD. AND A PORTION OF BLOCK 3, BEVERLY MANOR ADDITION.)

NEW WESTERN 3RD ADD.

OWNER: LINDY ANDEEL, 350 N. ROCK ROAD, WICHITA, KS. 67208

TOTAL NET ACRES = 2.70
 TOTAL NET SQ. FT. = 117,791.16

SCALE: 1" = 30'
 CONTOUR INTERVAL = 1'



- NOTES:**
- 1) M.N. PAD ELEV. FOR NEW STRUCTURES - 1343 M.S.L.
 - 2) BENCH MARK: R.A. SPIKE IN N. FACE OF P.P. 132' S. OF THE SOUTH LINE OF KELLOGG STREET 40' R.O.W. AND 10' W. OF THE EAST R.O.W. LINE OF PINECREST. ELEV. - 154.33 CITY DATUM OR 13417.3 M.S.L.
 - 3) A DRAINAGE CONCEPT PLAN HAS BEEN PREPARED BY BAUGHMAN CO. P.L., SURVEYING AND ENGINEERING

LOCATION MAP

