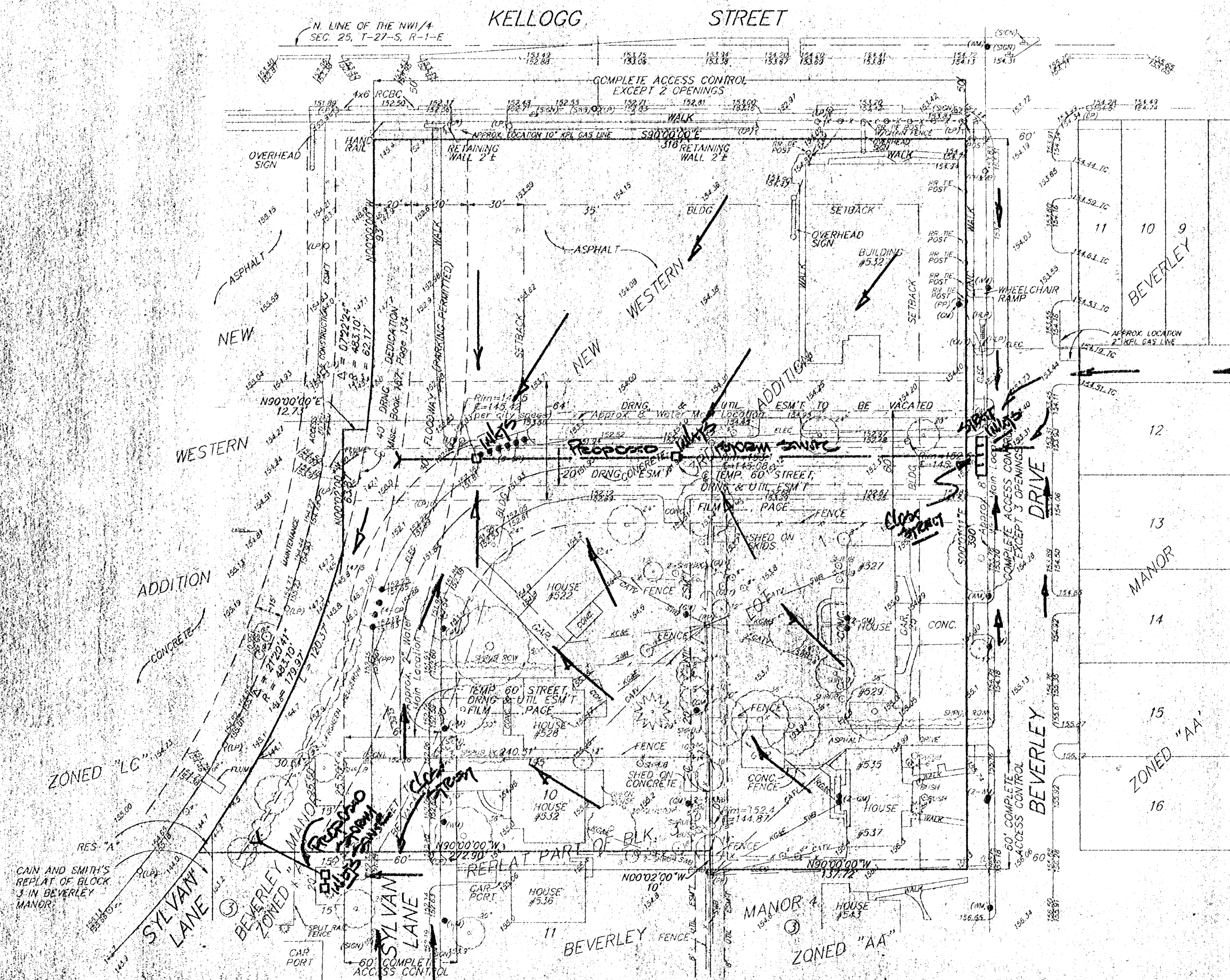


DRAINAGE CONCEPT. PRELIMINARY PLAT

NEW WESTERN 4TH ADDITION WICHITA, SEDGWICK COUNTY, KANSAS



SCALE
1" = 30'

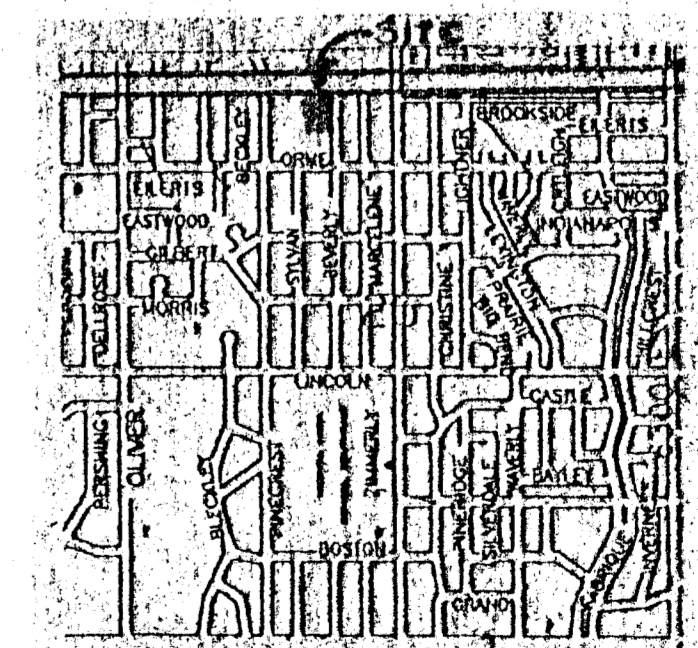
- LEGEND**
- (LP) - LIGHT POLE
 - (PP) - POWER POLE
 - (HL) - HIGH LINE POLE
 - (GM) - GUY WIRE
 - (SAB) - SOUTHWESTERN BELL POLE
 - (GP) - GUARD POST
 - (WM) - WATER METER
 - (GM) - GAS METER
 - (SIGN) - SIGN

LEGAL

A replat of New Western 3rd Addition, Wichita, Sedgwick County, Kansas, and a portion of Sylvan Lane, part of Block 3, Beverley Manor, Sedgwick County, Kansas, part of Reserve "A", Cain and Smith's Replat of a part of Block 3 in Beverley Manor, Sedgwick County, Kansas, and a portion of Lot 10, Replat of a portion of Block Three of Beverley Manor to Wichita, Sedgwick County, Kansas, thence north along the east line of said Lot 10, 10 feet for a point of beginning; thence west parallel with the south line of said Lot 10 and extended west to a point on the centerline of a 40 foot drainage easement as recorded in Misc. Book 167, Page 134, thence northeasterly along the centerline of said drainage easement to the S.W. Corner of Lot 1, New Western 3rd Addition, Wichita, Kansas; thence east along the south line of said Lot 1, 240.51 feet to a deflection corner in the south line of said Lot 1; thence south 50 feet to the point of beginning.

BENCHMARK
City Disc N.E. Corner RCBC at Pinecrest and Orme. Elev = 151.61

OWNER
New Western, LLC
Attn: Lindy Andeal
358 N. Rock Road
Wichita, Kansas 67206



VICINITY MAP