



Professional Engineering Consultants, PA.

303 S. TOPEKA • WICHITA, KANSAS 67202 • 316-262-2691 • FAX 316-262-3003 • www.pec1.com • designers@pec1.com

LETTER OF TRANSMITTAL

TO: W. B. Carter Construction
P.O. Box 4228
Wichita, KS 67204

PROJECT NO.: 34-98126-042
PROJECT: Newmarket Square Storm
Water Drain

ATTENTION: Jack Stamp

DATE: January 15, 1999

WE ARE SENDING YOU: Attached Under separate cover via _____ the following items:
 Shop drawings Prints Plans Samples Specifications
 Copy of letter Change order AutoCAD Drawing Files - Version 14 on 3.5" diskette(s)

COPIES	DATE	NO.	DESCRIPTION
4		PEC-1	Cascade Dimension/Sectional Drawing
4		PEC-2	Cascade Predicted Performance Curve
4		PEC-3	Electrical Submittal
4		PEC-4	USEMCO Electrical Control Systems

THESE ARE TRANSMITTED as checked below:

- For approval Approved as submitted Resubmit _____ copies for approval
 For your use Approved as noted Submit _____ copies for distribution
 As requested Returned for corrections Return _____ corrected prints
 For review and comment _____
 FOR BIDS DUE _____ PRINTS RETURNED AFTER LOAN TO US

REMARKS:

RECEIVED

JAN 19 1999

CITY - ENGINEERING

COPY TO Vicky Huand, P.E., COW (1),
Gary Jantzen, COW (1), File (1)

SIGNED Rod R. Young, P.E.

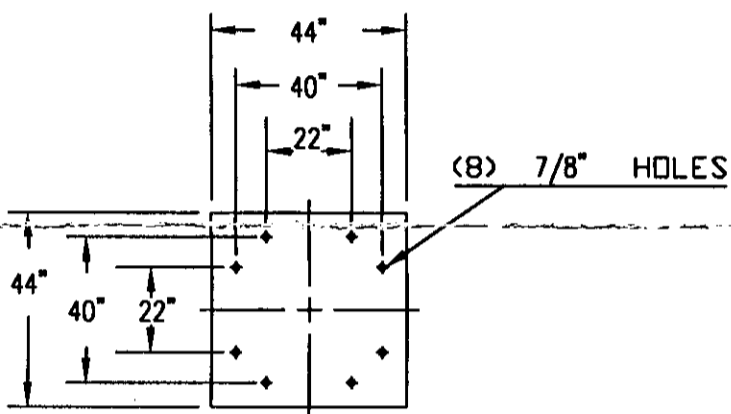
If enclosures are not as noted, kindly notify us at once.

REVISIONS

ITEM	REQ'D	DESCRIPTION	MATERIAL	PART NO.
1	1	SUCTION BOWL	C.I. CL-30	MF8101
2	1	SUCT. BOWL BUSHING	BRONZE	C102
3	1	THRUST COLLAR & KEY	416 STN. STL.	M100C
4	1	IMPELLER	BRONZE	MF8103
5	1	DISCHARGE BOWL BUSHING	BRONZE	C102
6	1	DISCHARGE BOWL	C.I. CL-30	MF8100
7	2	LINE SHAFT BEARING	BRONZE	C106A
8	1	BOWL SHAFT	416 STN. STL.	MF8150
9	2	LINE SHAFT COUPLING	C-1020 STL.	SC950
10	1	BOTTOM ENCL. TUBE	EX-HVY PIPE	C108
11	1	TOP ENCL. TUBE	EX-HVY PIPE	C108
12	1	LINE SHAFT	416 STN. STL.	SC1000
13	1	DISCHARGE ELBOW	FAB. STEEL	15448-1
14	1	TENSION NUT BODY	BRONZE	H36C
15	1	TENSION NUT	CAST IRON	H38
16	1	LOCK RING	BRONZE	H39A
17	1	LUBRICATOR - 120 VOLT	SOLENOID	STOCK
18	1	OIL RESERVOIR - GALLON	ALUMINUM	STOCK
19	1	HEAD SHAFT	C-1045 STL.	C920
20	1	ADJUSTING NUT	STEEL	C921

ITEMS NO. 2, 5, 7 & 14 ARE RECOMMENDED SPARE PARTS

* CONTRACTOR TO VERIFY PRIOR TO RELEASE TO MANUFACTURE



BOWL SHAFT DIA. = 1 3/16"
 LINE SHAFT DIA. = 1 3/16"
 HEAD SHAFT DIA. = 1 3/16"
 ENCL. TUBE = 2"

SHOP ORDER - 15448

CASCADE PUMP COMPANY
 SANTA FE SPRINGS, CALIFORNIA

#10MF MIXED FLOW PUMP
 10 3/4" O.D. DISCHARGE

PUMP & POWER EQUIPMENT, INC.

ORDER 11894-A

DATE 12-7-98

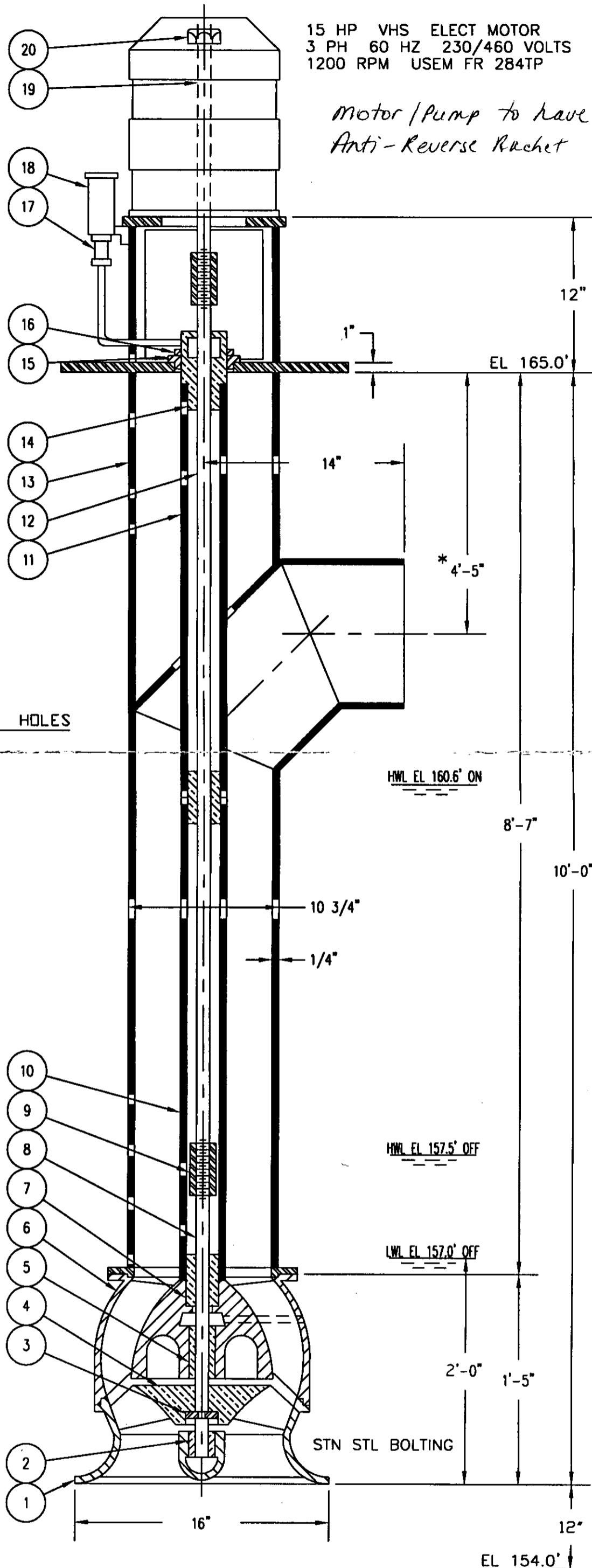
SCALE

DRAWN HB

CHECKED LB

3MSS185

CITY OF WICHITA, KS
 STORM WATER SEWER NO. 503
 NEW MARKET SQUARE ADDITION



CURVE NO. 15448



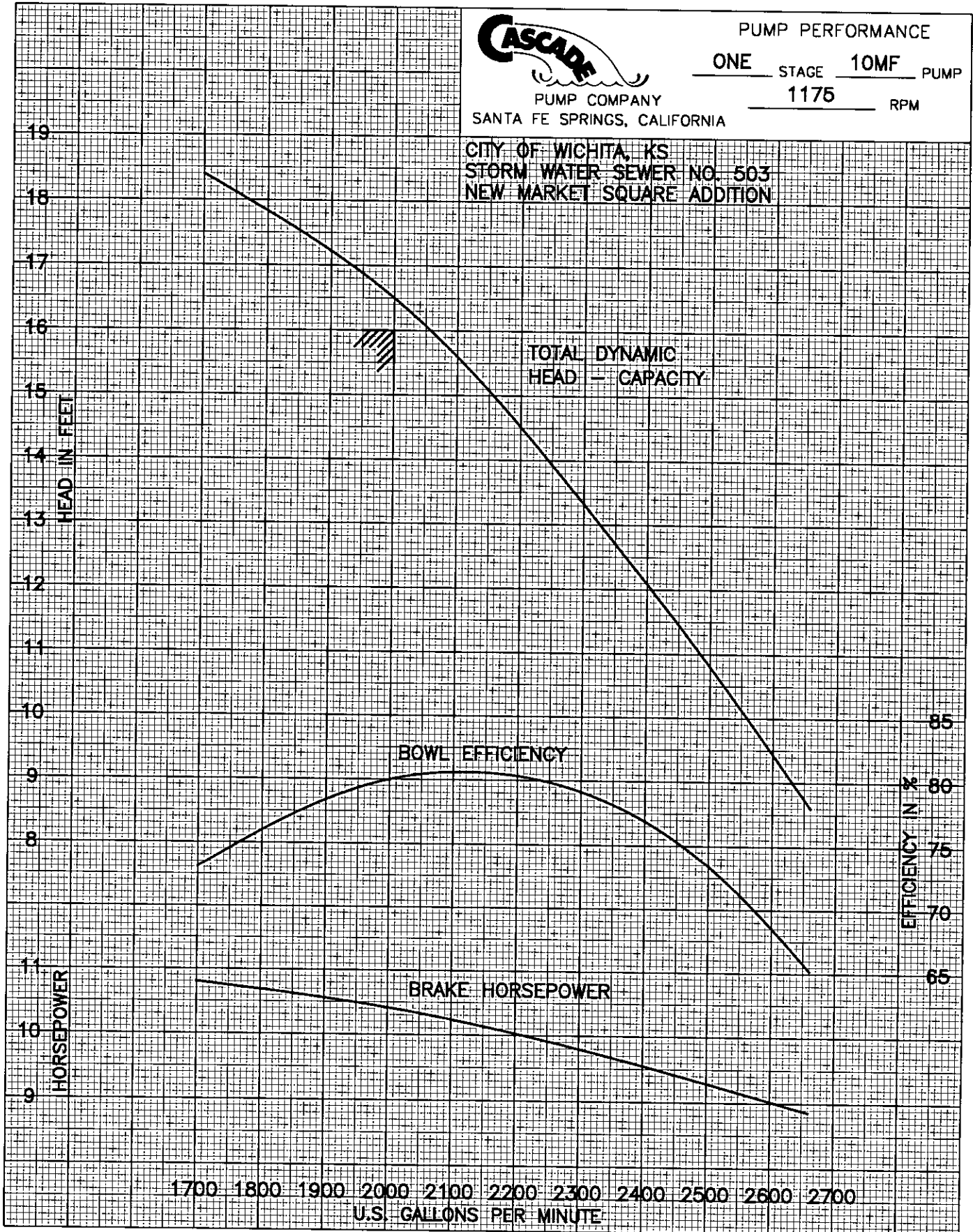
PUMP COMPANY
SANTA FE SPRINGS, CALIFORNIA

PUMP PERFORMANCE

ONE STAGE 10MF PUMP

1175 RPM

CITY OF WICHITA, KS
STORM WATER SEWER NO. 503
NEW MARKET SQUARE ADDITION



CURVES SHOW APPROXIMATELY THE CHARACTERISTICS WHEN PUMPING CLEAR NON-AERATED WATER. NO GUARANTEE IS MADE EXCEPT FOR THE RATED POINT.

TOTAL

ELECTRIC INC.

ELECTRICAL SUBMITTAL

NEW MARKET

W.B. CARTER CONSTRUCTION CO.

TOTAL ELECTRIC, INC.

1. Disconnect Switch
2. Fuses

TOTAL ELECTRIC, INC. ELECTRICAL SUBMITTALS	
<input checked="" type="checkbox"/>	APPROVED
<input type="checkbox"/>	APPROVED AS NOTED
<input type="checkbox"/>	RESUBMIT AS NOTED
BY	<u>R. Blaw</u>
DATE	<u>12-7-98</u>

Submittal Data

PROJECT: NEW MARKET

LOCATION: WICHITA

CONTRACTOR: TOTAL ELECTRIC

P.O. NUMBER: 98888

FILE NUMBER:

SUBMITTAL REVIEW

APPROVED BY: APPROVED

APPROVED AS CORRECTED

DATE:

If checked above, fabrication MAY be undertaken. Approval does not authorize changes to Contract Sum unless stated in a Change Order

If checked below, fabrication MAY NOT be undertaken. Resubmit corrected copies for final approval. Correction shall be limited to items marked.

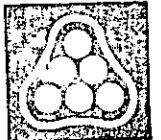
REVISE AND RESUBMIT

NOT APPROVED

BY

Engineers acceptance of Compliance Submittals will not relieve Contractor from his responsibility for any deviations from the requirements of the Contract Documents unless Contractor has in writing called Engineer's attention to such deviation at the time of submission and Engineer has given written approval to the specific deviation, nor shall any acceptance by Engineer relieve Contractor from responsibility for errors or omissions in Compliance Submittals.

PROFESSIONAL
ENGINEERING
CONSULTANTS
PROFESSIONAL ASSOCIATION



M M H

DATE 1/7/99

American Electric Company

ESTABLISHED 1897

Low-Peak® Dual-Element, Time-Delay, Class J Fuses

LPJ_SP

Dual-Element,
Time-Delay -

10 seconds (minimum) at
500% rated current

Ampere Ratings:

1-600 Amps.

Voltage Rating:

600 Volts AC (or less).

contact Bussmann for DC ratings.

Current Limiting

Interrupting Rating: 300,000A RMS Sym. (UL)

Agency Approvals:

UL Listed - Special Purpose**, Guide JFHR, File E56412

CSA Certified (200,000 AIR) Class J per CSA-22.2 No. 248.8,

Class 1422-02, File 53787

Dimensions: See pages 2-3 for Class J dimensional data.

Catalog Numbers

LPJ-1SP	LPJ-1½SF	LPJ-25SP	LPJ-125SP
LPJ-1½SP	LPJ-5SP	LPJ-30SP	LPJ-150SP
LPJ-1¾SP	LPJ-5½SP	LPJ-35SP	LPJ-175SP
LPJ-2SP	LPJ-6SP	LPJ-40SP	LPJ-200SP
LPJ-2¼SP	LPJ-7SP	LPJ-45SP	LPJ-225SP
LPJ-2½SP	LPJ-8SP	LPJ-50SP	LPJ-250SP
LPJ-2¾SP	LPJ-9SP	LPJ-60SP	LPJ-300SP
LPJ-3SP	LPJ-10SP	LPJ-70SP	LPJ-350SP
LPJ-3¼SP	LPJ-12SP	LPJ-80SP	LPJ-400SP
LPJ-3½SP	LPJ-15SP	LPJ-90SP	LPJ-450SP
LPJ-3¾SP	LPJ-17½SP	LPJ-100SP	LPJ-500SP
LPJ-4SP	LPJ-20SP	LPJ-110SP	LPJ-600SP

**Meets all performance requirements of UL Standard 248-8 for Class J fuses.
*Available with silver plated terminals. Add SP in front of part number.

*Carton Quantity and Weight

Ampere Ratings	Carton Qty.	Weight*	
		Lbs.	Kg.
0-30	10	1.09	0.49
35-60	10	1.73	0.81
70-100	5	1.83	0.77
110-200	5	4.21	1.91
215-400	1	1.67	0.76
450-600	1	2.80	0.27

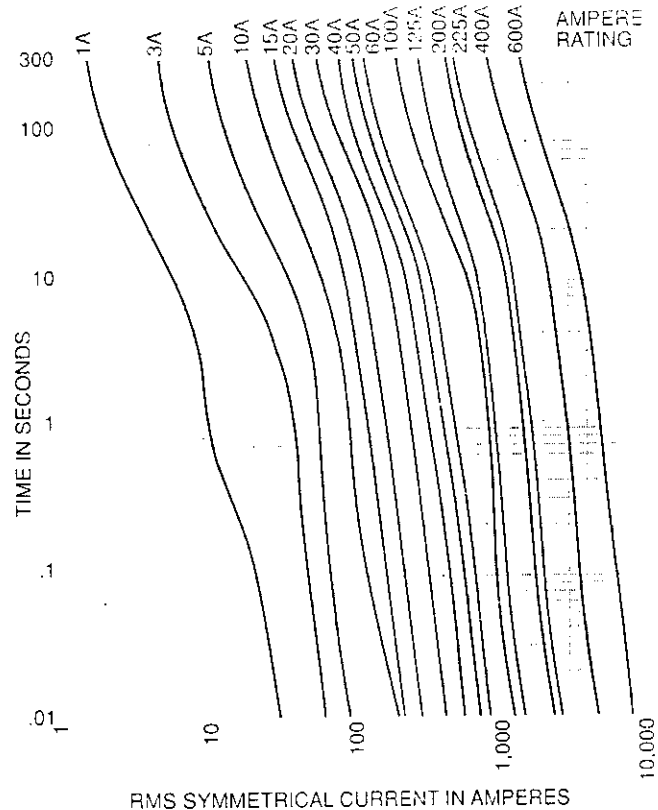
*Weight per carton.

See page 16 for Class J recommended fuseblocks.

CE logo denotes compliance with European Union Low Voltage Directive (50-1000V AC, 75-1500V DC). Refer to BIF document #8002 or contact Bussmann Application Engineering at 314-527-1270 for more information.



Time-Current Classification Curves—Average Melt



Current Limitation Curves

