

# F.E. NEWTON'S SECOND ADDITION TO SEDGWICK COUNTY, KANSAS

Know all men by these presents that we the undersigned, property owners of the land as set forth in the Civil Engineer's certificate, have caused the same to be surveyed and platted into Lots, Blocks, and Reserves, Easements for the construction and maintenance of public utilities and for drainage, as indicated on the accompanying plat, are hereby granted. The Streets are hereby dedicated to and for the use of the public. All abutter's rights of access to and from 53rd Street North and Highway I-135, over and across the North line of Block "A", and also the East line of Block "A", are hereby granted to the appropriate governing body. Reserve "A" shall be used for public utilities and drainage purposes, and also for the operation and maintenance of temporary wastewater treatment facilities. Reserve "A" shall be dedicated to the public by separate instrument.

Talma Bea Kloassen                      Ted Kloassen  
 \_\_\_\_\_  
 \_\_\_\_\_  
 Donald L. Newton  
 Board of County Commissioners of Sedgwick County, Kansas.  
 \_\_\_\_\_, Chairman  
 Jack Spratt  
 \_\_\_\_\_, Commissioner  
 Donald E. Grogg  
 \_\_\_\_\_, Commissioner  
 Tom Scott  
 Attest: \_\_\_\_\_, County Clerk  
 Dorothy K. White

STATE OF KANSAS, COUNTY OF SEDGWICK, SS:  
 Be it remembered that on this \_\_\_\_\_ day of \_\_\_\_\_, 1982, before me a notary public in and for said State and County, came Talma Bea Kloassen and Ted Kloassen, to me personally known to be the same persons who executed the foregoing instrument of writing and duly acknowledged the execution of the same. In testimony whereof I have hereunto set my hand and affixed my notarial seal the day and year above written.

\_\_\_\_\_, Notary Public  
 My Commission Expires \_\_\_\_\_

STATE OF LOUISIANA, PARISH OF OUACHITA, SS:  
 Be it remembered that on this \_\_\_\_\_ day of \_\_\_\_\_, 1982, before me, a notary public in and for said State and Parish, came Donald L. Newton, to me personally known to be the same person who executed the foregoing instrument of writing and duly acknowledged the execution of the same. In testimony whereof I have hereunto set my hand and affixed my notarial seal the day and year above written.

\_\_\_\_\_, Notary Public  
 My Commission Expires \_\_\_\_\_

This plat of "F.E. NEWTON'S SECOND ADDITION" has been submitted to and approved by the Wichita-Sedgwick County Metropolitan Area Planning Commission.  
 Dated this \_\_\_\_\_ day of \_\_\_\_\_, 1982.

WICHITA—SEDGWICK COUNTY METROPOLITAN AREA PLANNING COMMISSION  
 \_\_\_\_\_, Chairman  
 James L. Gardner II

\_\_\_\_\_, Secretary  
 Robert A. Lakin  
 This plat has been approved and all dedications shown hereon, if any, accepted by the City Commission of the City of Wichita, Kansas, \_\_\_\_\_ day of \_\_\_\_\_, 1982.

\_\_\_\_\_, Mayor  
 R.C. Brown  
 \_\_\_\_\_, City Clerk  
 Donald C. Gisick

This plat has been approved and all dedications shown hereon, if any, accepted by the Board of County Commissioners of Sedgwick County Kansas, this \_\_\_\_\_ day of \_\_\_\_\_, 1982.

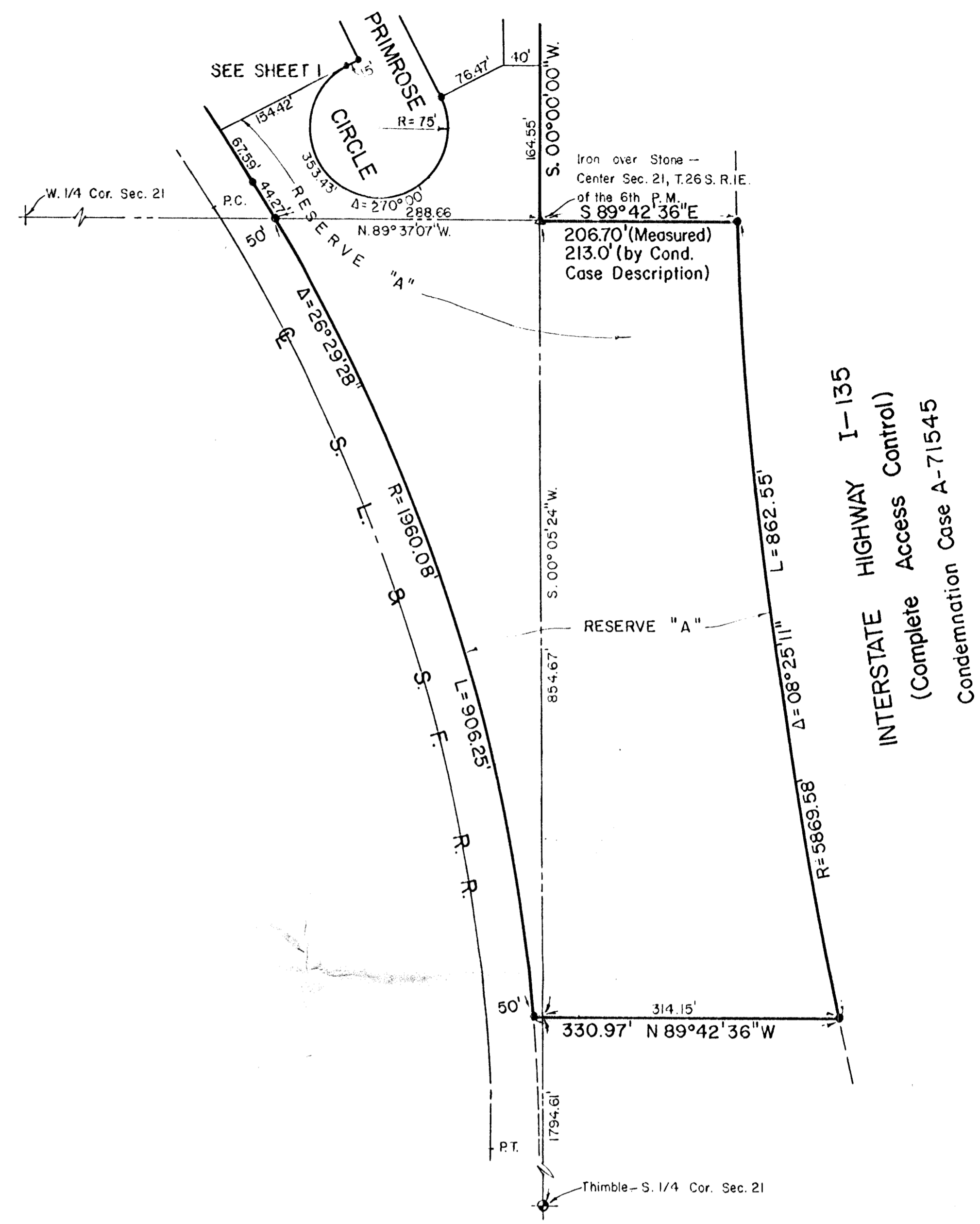
\_\_\_\_\_, Chairman  
 Jack Spratt  
 \_\_\_\_\_, Commissioner  
 Donald E. Grogg

\_\_\_\_\_, Commissioner  
 Tom Scott  
 Attest: \_\_\_\_\_, County Clerk  
 Dorothy K. White

STATE OF KANSAS, COUNTY OF SEDGWICK, SS:  
 This is to certify that this instrument was filed for record in the Register of Deeds Office at \_\_\_\_\_ on the \_\_\_\_\_ day of \_\_\_\_\_, 1982.

\_\_\_\_\_, Register of Deeds  
 Bette F. McCart  
 \_\_\_\_\_, Deputy  
 Pat Kettler

Entered on transfer record this \_\_\_\_\_ day of \_\_\_\_\_, 1982.  
 \_\_\_\_\_, County Clerk  
 Dorothy K. White



INTERSTATE HIGHWAY I-135  
 (Complete Access Control)  
 Condemnation Case A-71545

