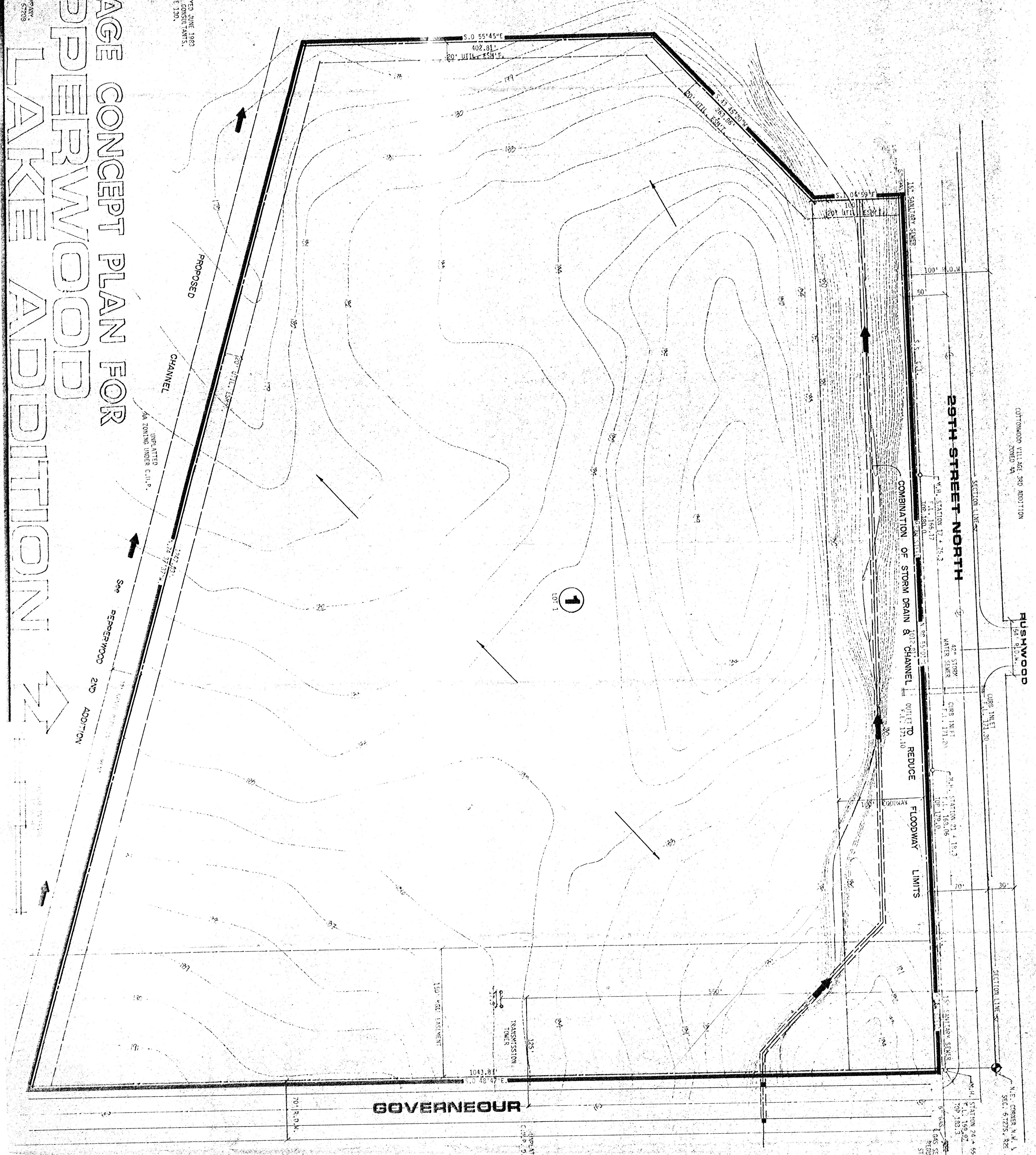


# DRAINAGE CONCEPT PLAN FOR PEPPERWOOD LAKE ADDITION

OWNER: AUSTIN DEVELOPMENT COMPANY  
 240 NORTH ROCK ROAD, SUITE 130  
 WICHITA, KANSAS 67208

NOTE: EXISTING TOPOGRAPHY SURVEYED, JUNE 1983  
 BY MID-KANSAS ENGINEERING CONSULTANTS,  
 240 NORTH ROCK ROAD, SUITE 130,  
 WICHITA, KANSAS 67208



PROPOSED ADDITION  
 FLOODWAY RESERVE  
 ZONED MA

COTTONWOOD HILL SEC. 399 ADDITION  
 ZONED MA

RUSHWOOD  
 SEC. 398, 399

N.E. CORNER N.W. 1  
 SEC. 4, 27.5, 28E



MID-KANSAS ENGINEERING CONSULTANTS P.A.  
 240 NORTH ROCK ROAD  
 SUITE 130  
 WICHITA, KANSAS 67208  
 682-6561