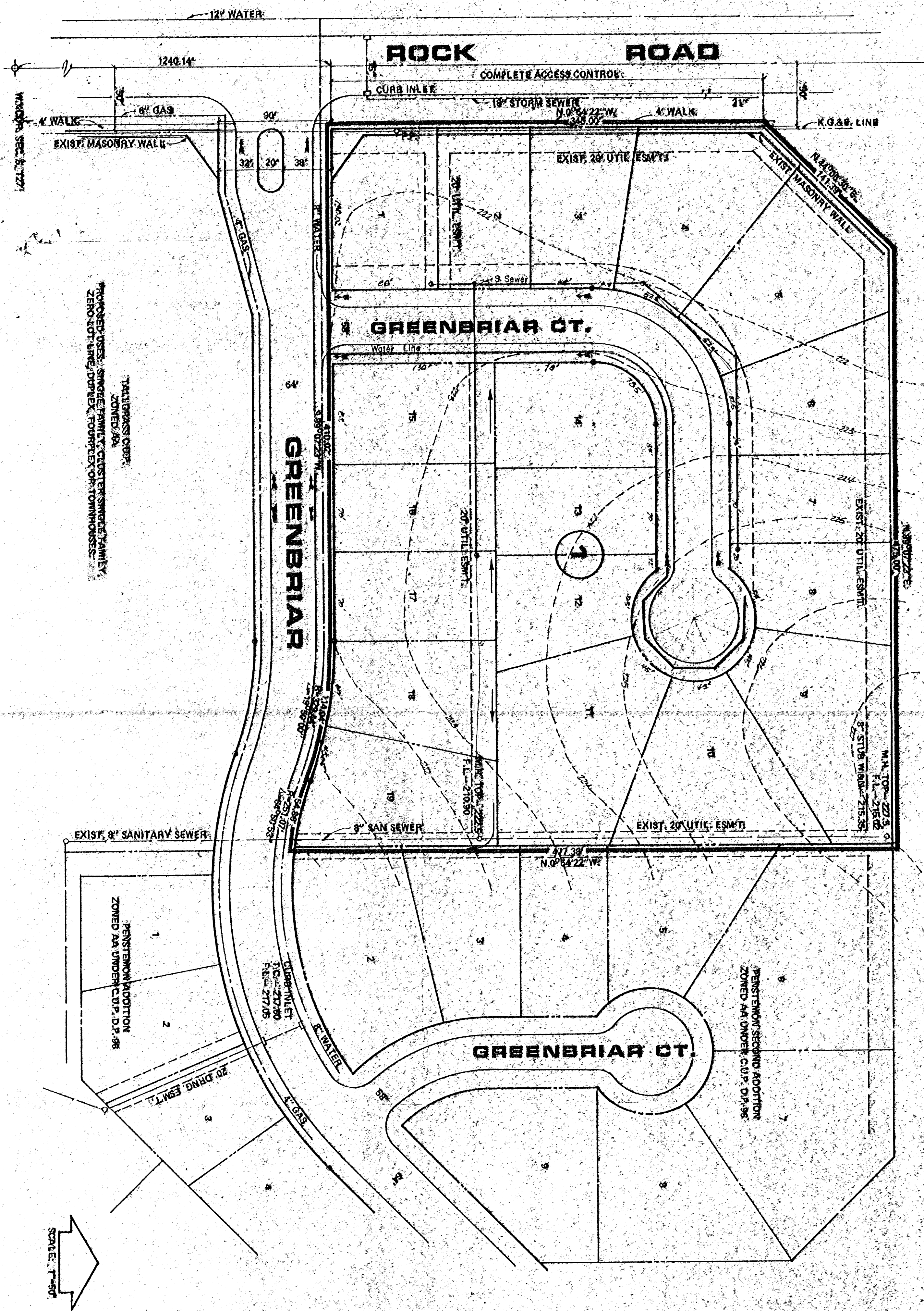


PRELIMINARY DRAINAGE & UTILITY PLAN
PENSTEMON 3RD ADDITION

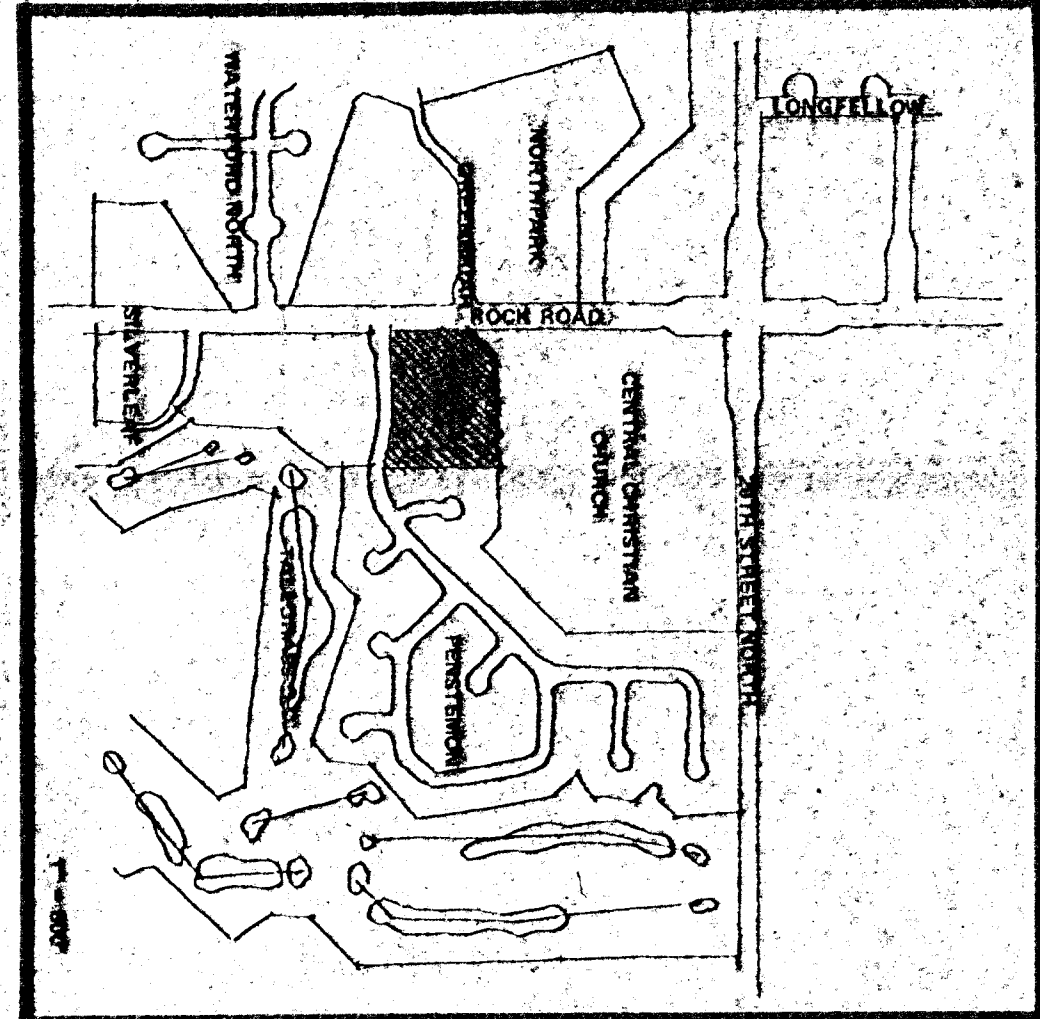
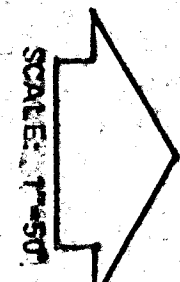


TALIBASS COPR.
 ZONED RA
 PROPOSED USE: SINGLE-FAMILY, CLUSTER-SINGLE-FAMILY,
 ZERO-LOT-LINE, DUPLEX, TOWNHOUSE, CONDOMINIUMS

SEMI-DETACHED SECOND ADDITION
 ZONED RA

EXIST. 8" SANITARY SEWER
 PENSTEMON ADDITION
 ZONED RA UNDER C.U.P. D.P.#8

PROPOSED SECOND ADDITION
 ZONED RA UNDER C.U.P. D.P.#8



NOTES:
 SETBACKS AS PER TALIBASS C.U.P. D.P.#8.
 DRAINAGE CONCEPT PLAN TO BE SUBMITTED BY W.C.E.C. TO APPROPRIATE
 CITY ENGINEER.
 R.M. - R.R. SINCE N.W. 1/4, 20W SOUTH OF GREENBRIAR ELEV. 222.84

