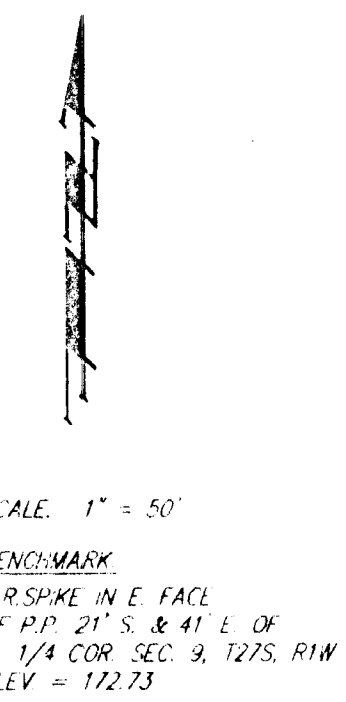
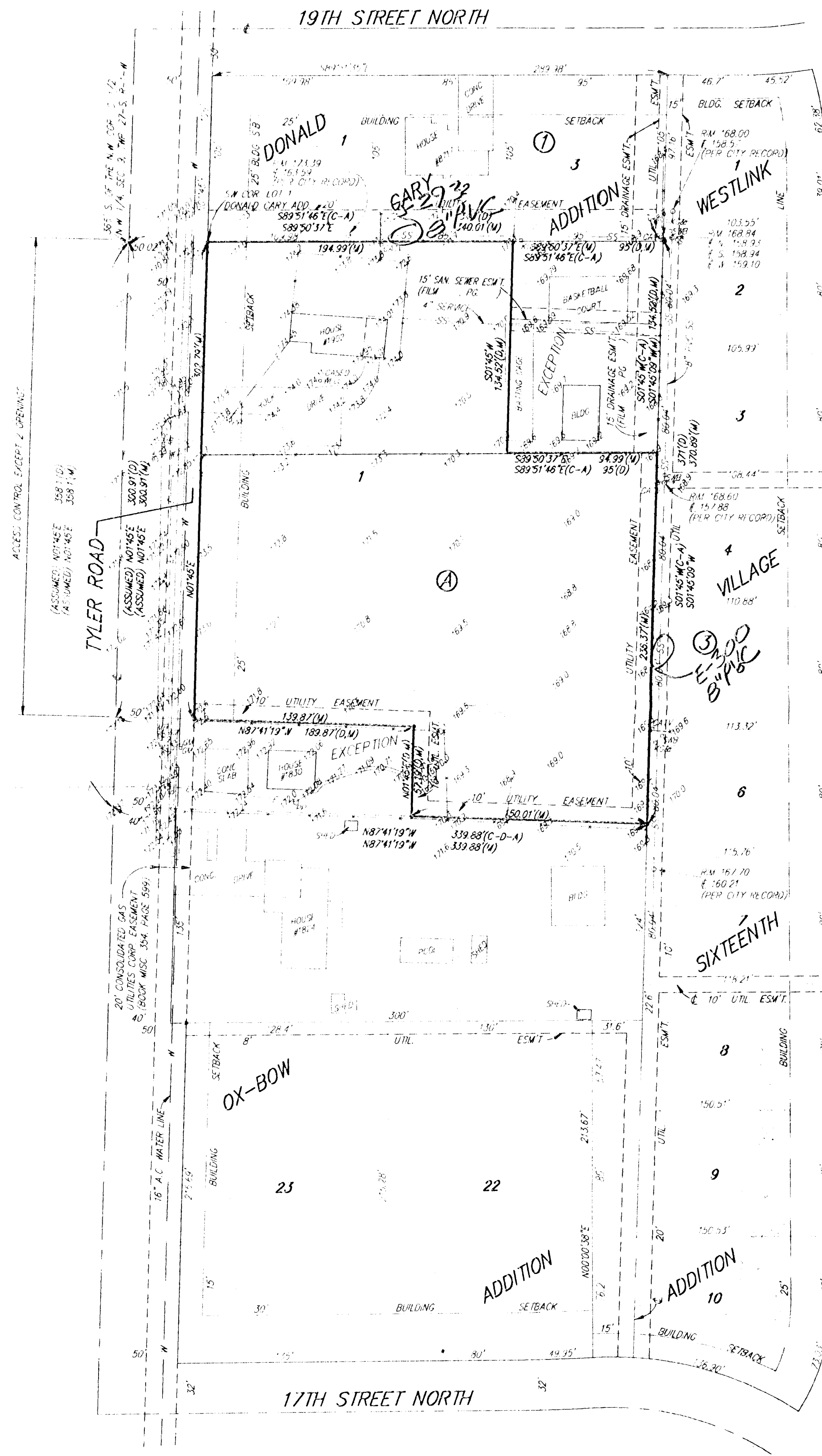


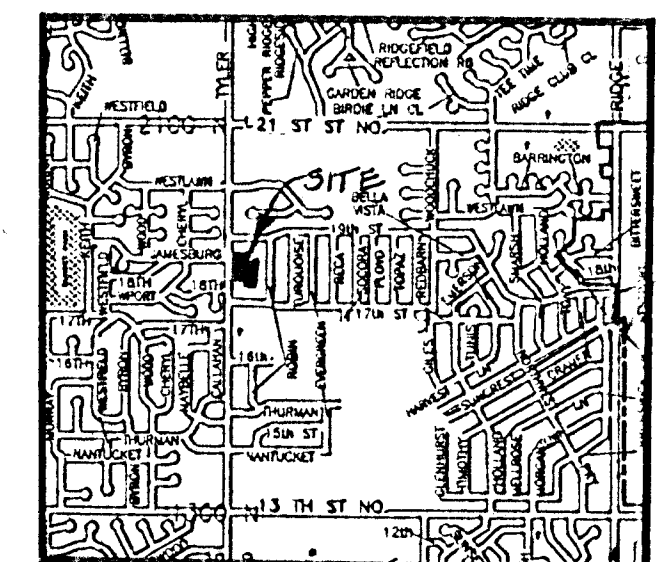
SKETCH PLAT MIDLAND BAPTIST CHURCH ADDITION

WICHITA, SEDGWICK COUNTY, KANSAS



MIDLAND BAPTIST CHURCH
ATTN: DALE HEFFERMAN
1354 LEECREST
WICHITA, KS 67209
PH: 316-721-1860

That part of the south half of the N.W. 1/4 of Sec. 9, Twp. 27-S, R-1-W of the 6th P.M., Sedgwick County, Kansas described as beginning at the southwest corner of Lot 1, Block 1, Donald Cary Addition to Wichita, Sedgwick County, Kansas; thence east along the south line of said Lot 1, 103.98 feet to the southeast corner of said Lot 1, thence south along the east line of said Lot 1 extended, 7.0 feet; thence west parallel to the south line of said Lot 1, 109.98 feet; thence north 7.0 feet to the point of beginning, AND that part of the south half of the N.W. 1/4 of Sec. 9, Twp. 27-S, R-1-W of the 6th P.M., Sedgwick County, Kansas described as beginning at the southwest corner of Lot 2, Block 1, Donald Cary Addition to Wichita, Sedgwick County, Kansas; thence S89°51'35"E, along the south line of said Lot 2, 85.0 feet; thence S1°45'00"W, 154.52 feet; thence N90°00'00"W, 60.02 feet; thence N1°45'00"E, 120.37 feet; thence N84°12'53"W, 25.60 feet; thence N8°33'12"E, 4.83 feet; thence N1°45'00"E, 7.0 feet to the point of beginning, AND that part of the south half of the N.W. 1/4 of Sec. 9, Twp. 27-S, R-1-W of the 6th P.M., Sedgwick County, Kansas described as beginning at a point 372 feet south of the N.W. corner thereof; thence S1°45'00"W along the west line 128 feet; thence N90°E parallel with the north line of said south half of said N.W. 1/4, 184.97 feet; thence N1°45'00"E, 120.37 feet; thence N84°12'53"W, 25.60 feet; thence N8°33'12"E, 4.83 feet; thence N89°51'35"W, 153.98 feet to the point of beginning, AND beginning at a point on the west line of the N.W. 1/4 of Sec. 9, Twp. 27-S, R-1-W of the 6th P.M., Sedgwick County, Kansas, said point being 500 feet south of the N.W. corner of the south half of said N.W. 1/4; thence east parallel with the north line of the south half of said N.W. 1/4, 340 feet; thence south parallel with the west line of said N.W. 1/4, 236 feet; thence westerly on a line which intersects the west line of said N.W. 1/4, 723.1 feet south of the N.W. corner of the south half of said N.W. 1/4, a distance of 150.01 feet; thence north parallel with the west line of said N.W. 1/4, 57.19 feet; thence westerly 189.87 feet to a point on the west line of said N.W. 1/4, said point being 665.91 feet south of the N.W. corner of the south half of said N.W. 1/4; thence north 165.91 feet to the point of beginning, except the west 40 feet thereof for road.



Vicinity Map