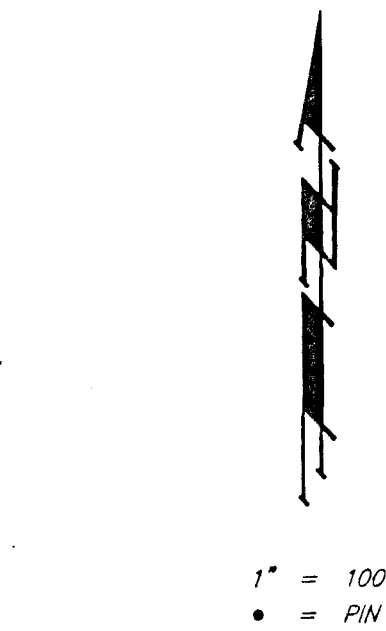
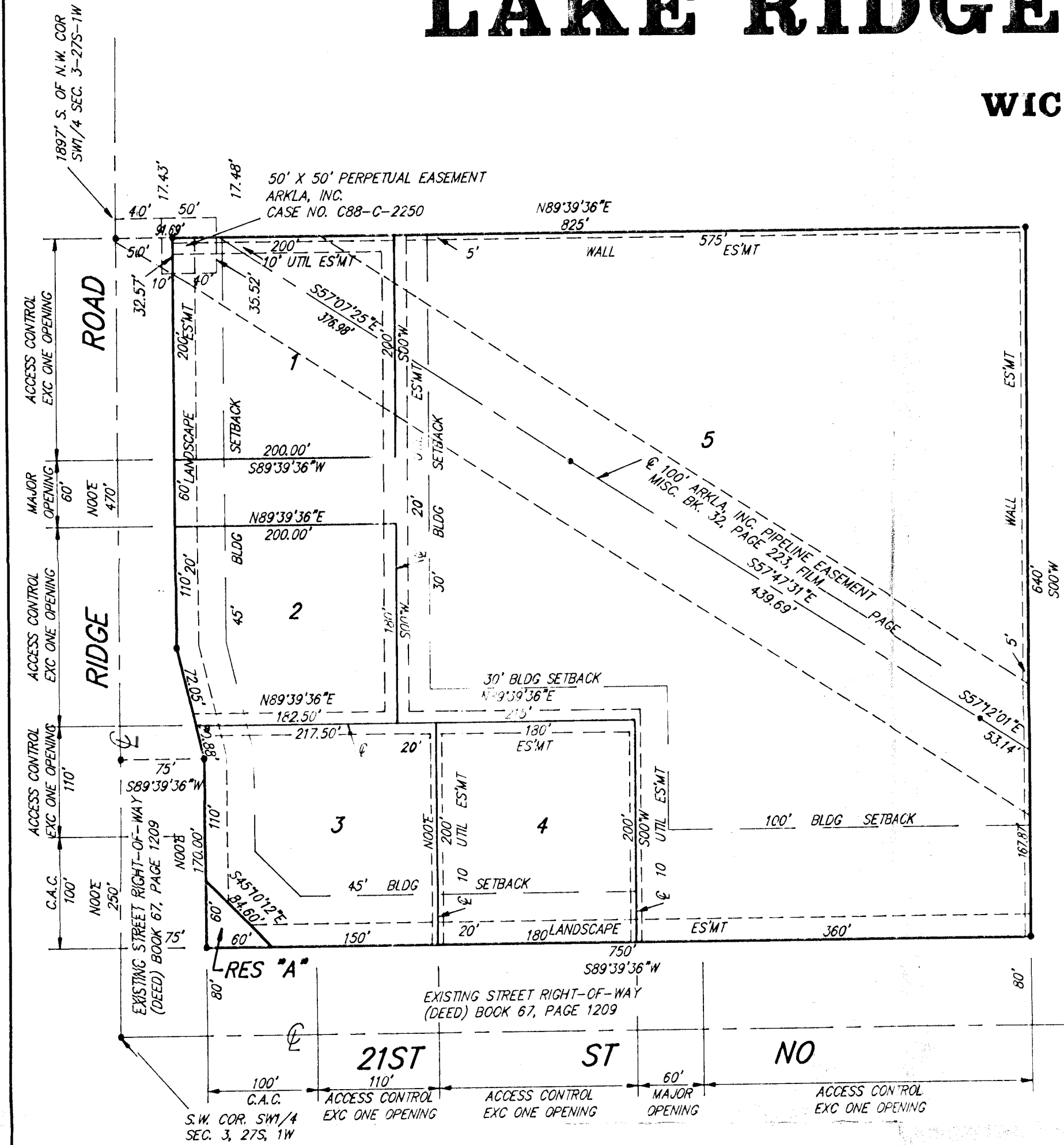


LAKE RIDGE COMMERCIAL ADDITION

WICHITA, SEDGWICK COUNTY, KANSAS



NOTE: THERE ARE ADDITIONAL SETBACK REQUIREMENTS PER THE APPROVED ASSOCIATED C.U.P. ON FILE WITH MAPS.

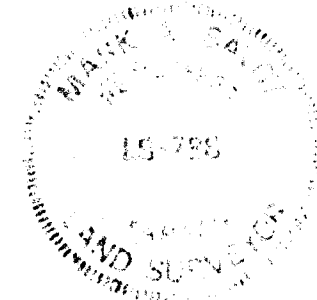
State of Kansas) SS We, Baughman Company, P.A., Surveyors in
Sedgwick County) the aforesaid County and State do hereby certify that we have surveyed
and platted "LAKE RIDGE COMMERCIAL ADDITION", Wichita, Sedgwick County,
Kansas and that the accompanying plat is a true and correct exhibit of the property surveyed, described as follows: That part of the S1/2 of the SW1/4 of Sec. 3, Twp. 27-S, R-1-W of the 6th P.M., Sedgwick County, Kansas, described as commencing at the S.W. Corner of said SW1/4; thence N 00° E, along the west line of said SW1/4, 250 feet for a place of beginning; thence N 00° E, along the west line of said SW1/4, 470 feet; thence N 89°39'36" E, parallel with the south line of said SW1/4, 825 feet; thence S 00° W, 640 feet to a point on the north right-of-way line of 21st St. No., as established in Deed Book 67, at Page 1209, said point being 80 feet north of the south line of said SW1/4; thence S 89°39'36" W, along said right-of-way line and being parallel with the south line of said SW1/4, 750 feet to a point 75 feet east of the west line of said SW1/4; thence N 00° E, 170 feet; thence S 89°39'36" W, 75 feet to the place of beginning.

Existing public easements and dedications being vacated by virtue of K.S.A. 12-512(b).

Baughman Company, P.A.

Date 10-Jul-92

Mark A. Saffoy
Mark A. Saffoy Surveyor



Know all men by these presents that we, the undersigned, have caused the land in the surveyors certificate to be platted into Lots, Reserves and streets to be known as "LAKE RIDGE COMMERCIAL ADDITION", Wichita, Sedgwick County, Kansas. Reserve "A" is hereby reserved for earthberms, landscaping, lighting, irrigation, drainage, signage, entry monuments, sidewalks, bike paths and utilities confined to easements. The landscaping easements are hereby granted as indicated for the construction and maintenance of private landscaping, allowing for earthberms, landscaping, lighting, irrigation, drainage, signage, sidewalks, bike paths, utilities confined to easements and utilities and driveways are allowed to cross these easements. Reserve "A" shall be owned by the lot owners association for the addition and Reserve "A" and the landscaping easements shall be maintained by the lot owners association for the addition. The 5 foot wall easements are hereby granted as indicated for the construction and maintenance of a private wall and utilities are allowed to cross these easements. The utility easements are hereby granted as indicated for the construction and maintenance of all public utilities. The Street is hereby dedicated to and for the use of the public. Access controls are hereby granted to the appropriate governing body as indicated on the face of the plat and shall be as determined by the engineer of the appropriate governing body
Lakeridge Investors, L.C., a Kansas Limited Liability Company

Jerry Hoggatt
Jerry Hoggatt President

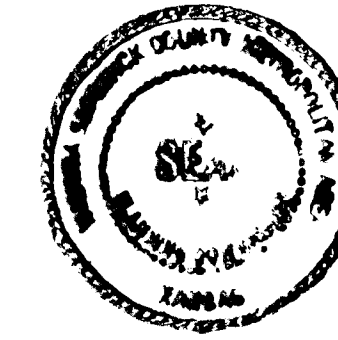
State of Kansas) SS The foregoing instrument acknowledged before me, this 10th day of July, 1992, by Jerry Hoggatt, President of Lakeridge Investors, L.C., a Kansas Limited Liability Company, on behalf of the corporation.

Richard C. Young
Richard C. Young Notary Public

My App't. Exp. 12-31-95

This plat of "LAKE RIDGE COMMERCIAL ADDITION", Sedgwick County, Kansas has been submitted to and approved by the Wichita-Sedgwick County Metropolitan Area Planning Commission Wichita, Kansas.
Dated this 10th day of July, 1992
Wichita-Sedgwick County Metropolitan Area Planning Commission

Christopher J. Gobel
Christopher J. Gobel Chairman
Marvin S. Krout
Marvin S. Krout Secretary



This plat approved and all dedications shown hereon accepted by the City Council of the City of Wichita, Kansas, this 22 day of July, 1992.

Bob Knight
Bob Knight Mayor
Pat Burnett
Pat Burnett Deputy City Clerk

State of Kansas) SS This is to certify that this plat has been
Sedgwick County) filed for record in the office of the Register of Deeds, this 10th day of July, 1992, at 10 o'clock A.M. and is duly recorded.

Pat Kettler
Pat Kettler Register of Deeds
Ed Resa
Ed Resa Deputy

Entered on transfer record this 10th day of July, 1992.

Don Wright
Don Wright County Clerk

We, the undersigned, holders of a mortgage on the above described property, do hereby consent to this plat of "LAKE RIDGE COMMERCIAL ADDITION", Wichita, Sedgwick County, Kansas.

Chris A. Anderson
Chris A. Anderson Vice-President
Prairie State Bank of Maize

State of Kansas) SS The foregoing instrument acknowledged before me, this 10th day of July, 1992, by Chris A. Anderson, Vice-President of Prairie State Bank of Maize, on behalf of the corporation.

Jane Cochran
Jane Cochran Notary Public
My App't. Exp. 12-31-95