
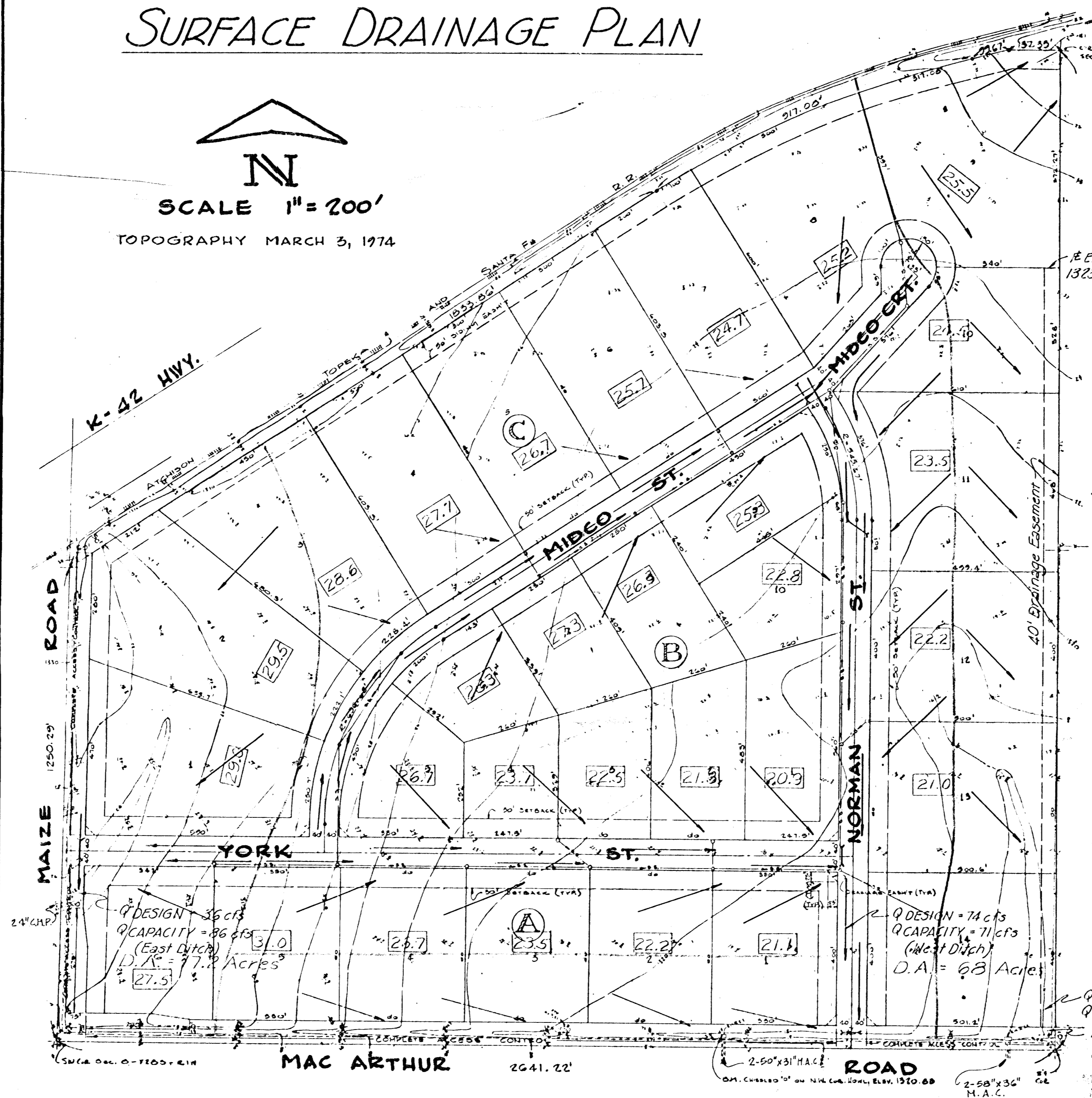


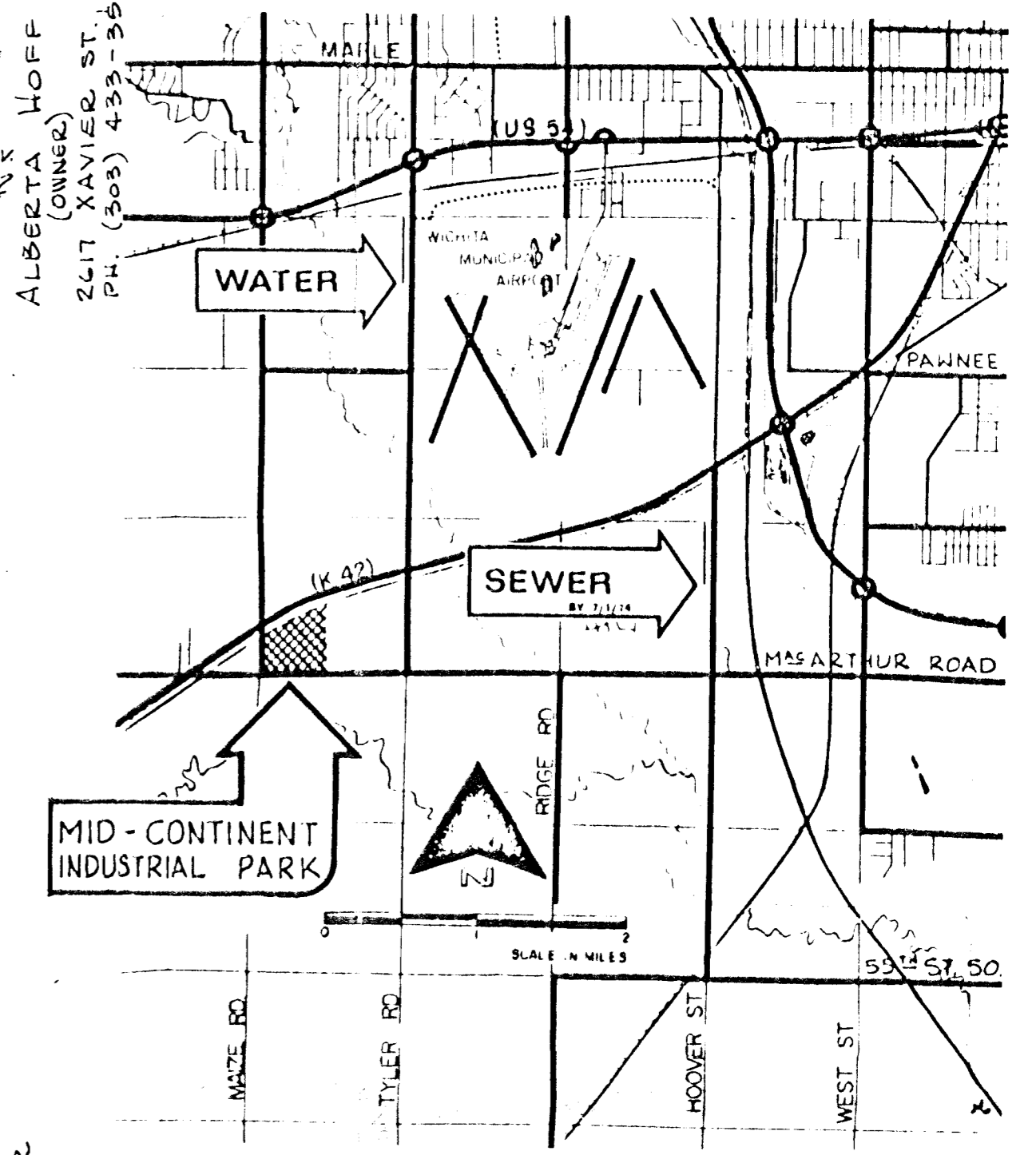
# PRELIMINARY PLAT OF MID-CONTINENT INDUSTRIAL PARK SEDGWICK COUNTY, KANSAS

## SURFACE DRAINAGE PLAN

  
**N**  
 SCALE 1" = 200'  
 TOPOGRAPHY MARCH 3, 1974



All that part of the SW $\frac{1}{4}$  Sec. 8-T28S-R1W of the 6th. P.M. lying South of Southerly Right of Way Line of the A.T. & S.F. Railway, Sedgwick County, Kansas.



Grades shown are dirt grades.  
 Floor elevations shall be a minimum  
 of 12" higher.  
 NOV 7 1974

**OFFICE COPY**  
 DELAMATER, FREUND & SCHERER  
 CONSULTING ENGINEERS

Rev. 11-6-74 Rev. 11-7-74  
 AUGUST, 1974 230-J-301-A

Rev. to Show Surface Dr. Plan 10-24-74