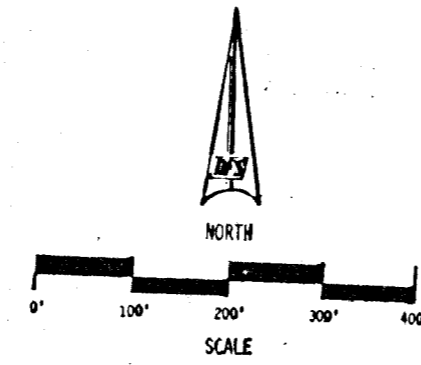
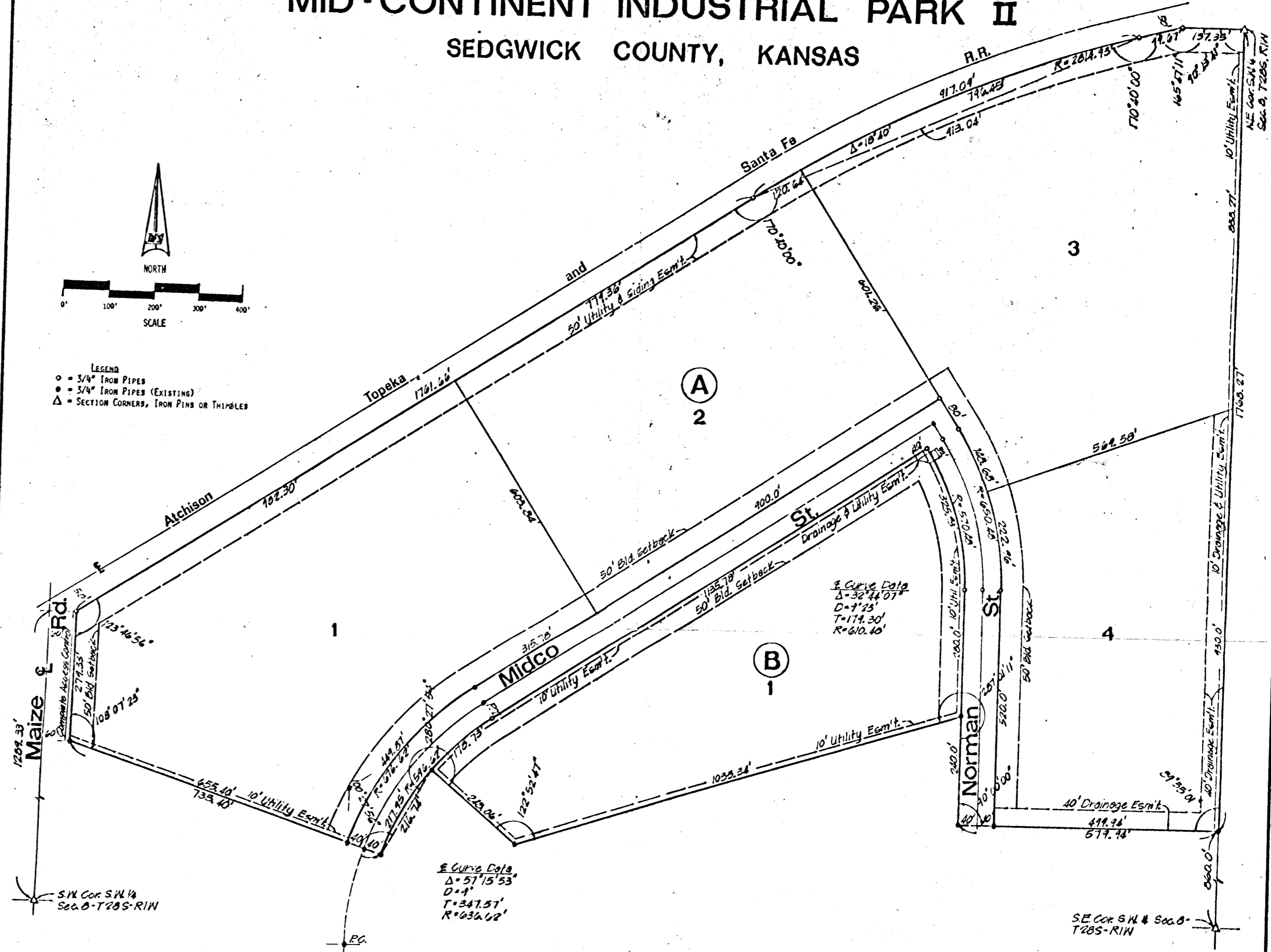


MID-CONTINENT INDUSTRIAL PARK II SEDGWICK COUNTY, KANSAS



- LEGEND**
- = 3/4" IRON PIPES
 - = 3/4" IRON PIPES (EXISTING)
 - △ = SECTION CORNERS, IRON PINS OR THIMBLES



STATE OF KANSAS) S.S.
 COUNTY OF SEDGWICK)
 I, Wilmer Freund, a Licensed Professional Engineer in the aforesaid County and State, do hereby certify that I have surveyed and platted MID-CONTINENT INDUSTRIAL PARK II, Sedgwick County, Kansas, into lots, blocks, and streets and that the accompanying plat is a true and correct exhibit of the property surveyed, described as: All that part of Sec. 8-T28S-R1W of the 5th P.M. lying South of Southern Right of Way Line of the AT&SF R.R., except MID-Continent Industrial Park I, Sedgwick County, Kansas, containing 68.36 acres, more or less, Sedgwick County, Kansas.

Wilmer Freund, P.E.

Know all men by these presents that we, the undersigned, owners of the land described in the Engineer's Certificate, have caused the same to be surveyed and platted into lots, blocks and streets, the same to be known as MID-CONTINENT INDUSTRIAL PARK II, Sedgwick County, Kansas. Drainage Easements are hereby granted for the construction and maintenance of public utilities and/or drainage facilities as indicated.

ATTEST: MID-CONTINENT INDUSTRIAL DEVELOPMENT, INC.
 Bernice M. Evans, Secretary John D. Evans, President

We, Reserve Savings and Loan Association, by B. R. Monroe, President, holders of a mortgage on the above described property, do hereby consent to the plat of MID-CONTINENT INDUSTRIAL PARK II, Sedgwick County, Kansas.

ATTEST: RESERVE SAVINGS AND LOAN ASSOCIATION
 Rosemary Murray, Secretary B. R. Monroe, President

STATE OF KANSAS) S.S.
 COUNTY OF SEDGWICK)
 The foregoing instrument was acknowledged before me this _____ day of _____, 19____, by John D. Evans, President of Mid-Continent Industrial Development, Inc., a Kansas Corporation, on behalf of the corporation, and by B. R. Monroe, President of Reserve Savings and Loan Association, on behalf of the Association.

My Commission Expires: _____ Notary Public

This plat has been submitted to and approved by the Wichita-Sedgwick County Metropolitan Area Planning Commission, Wichita, Kansas, this _____ day of _____, 19____.

Robert A. Lakin, Secretary William J. Soebel, Chairman

This plat approved and all dedications shown hereon accepted by the Board of Commissioners of the City of Wichita, Kansas, this _____ day of _____, 19____.

Donald C. Bister, City Clerk James M. Donnell, Mayor

This plat approved and all dedications shown hereon accepted by the Board of County Commissioners of Sedgwick County, Kansas, this _____ day of _____, 19____.

Tom Scott, Chairman Everett Patrick, Commissioner
 ATTEST: John H. White, County Clerk John H. White, Commissioner

Entered on transfer record this _____ day of _____, 19____.

John H. White, County Clerk

STATE OF KANSAS) S.S.
 COUNTY OF SEDGWICK)
 This is to certify that this instrument was filed for record in the Register of Deeds Office, at _____ o'clock _____ M., on the _____ day of _____, 19____.

Fat Kettler, Deputy Velta F. McCurt, Register of Deeds
 DF&S 3-17-77 230-U-II 201